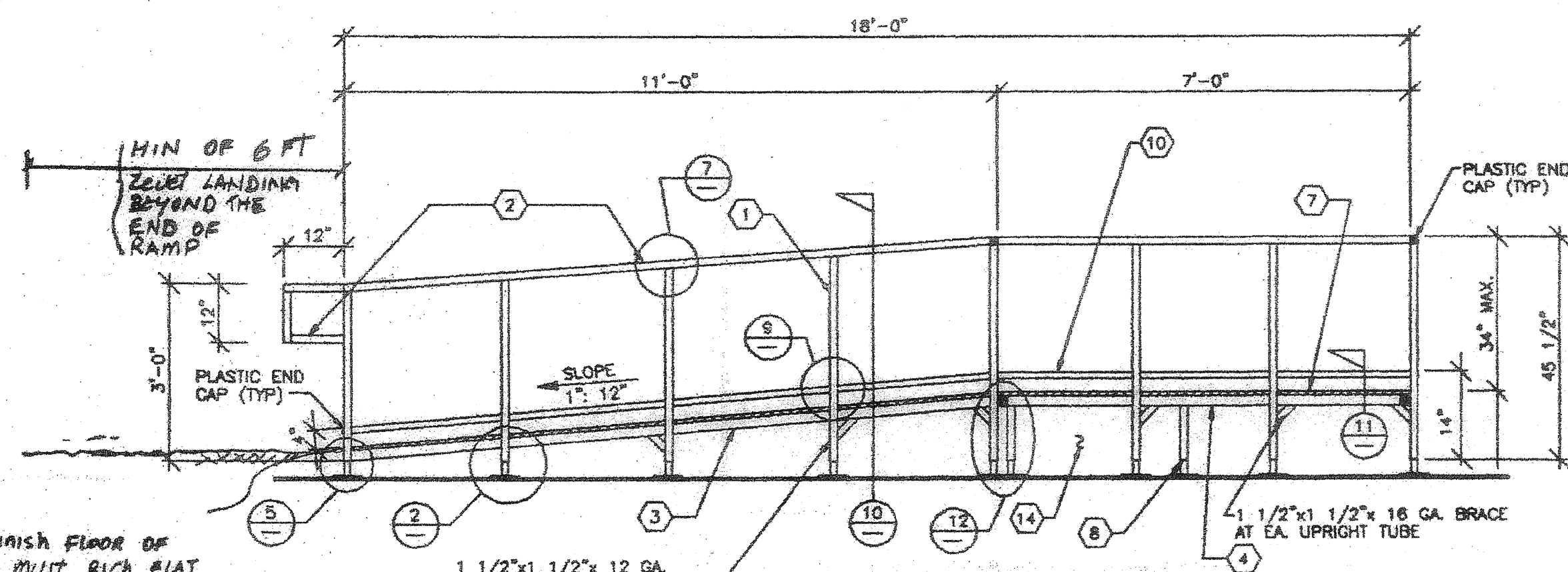
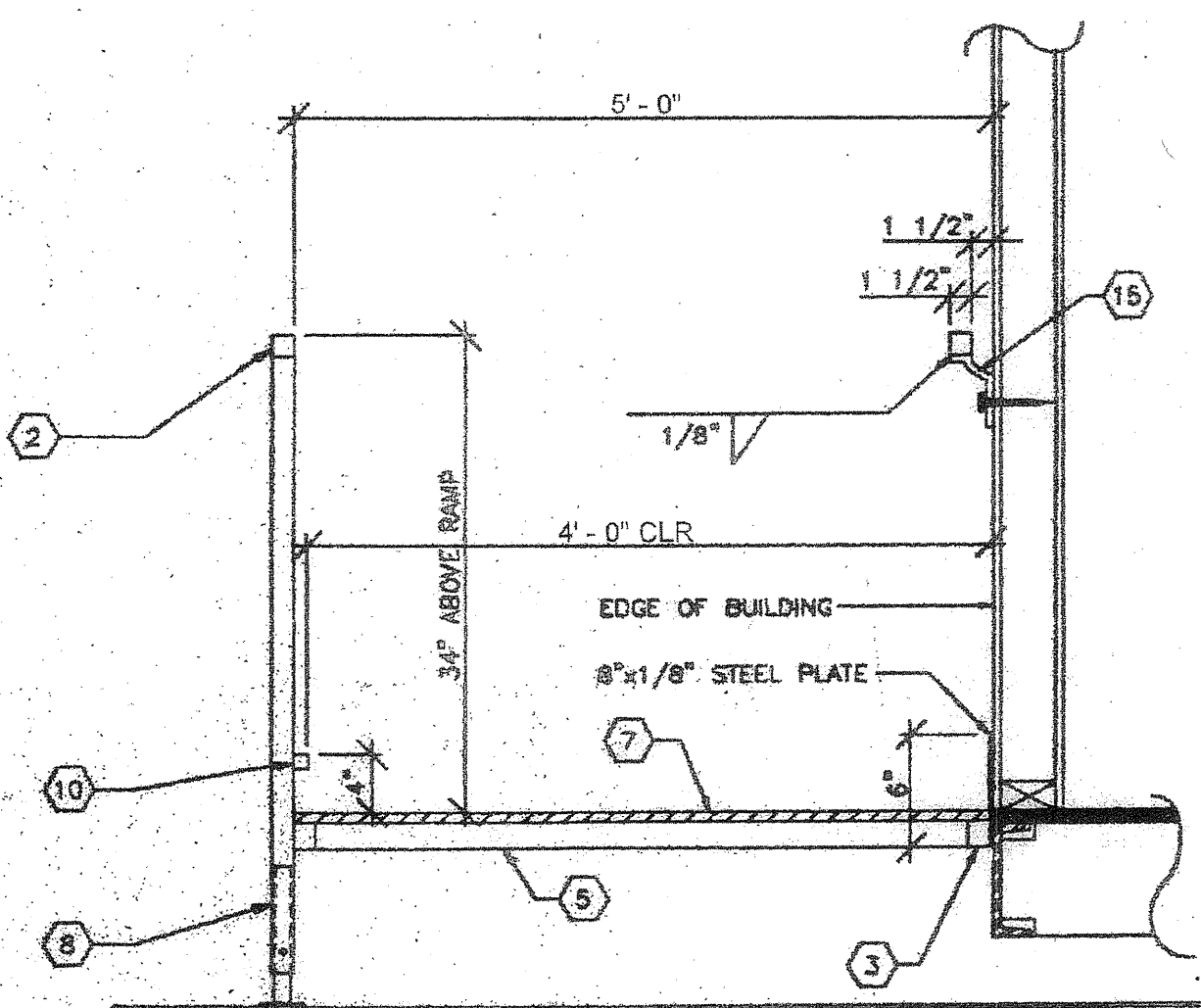


FRAMING PLAN
SCALE: 1/2" = 1'-0"

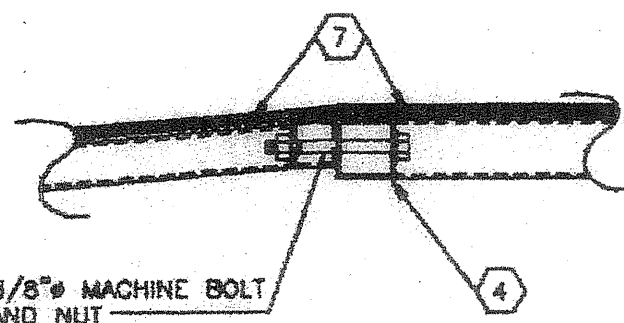


FRONT ELEVATION
SCALE: 1/2" = 1'-0"

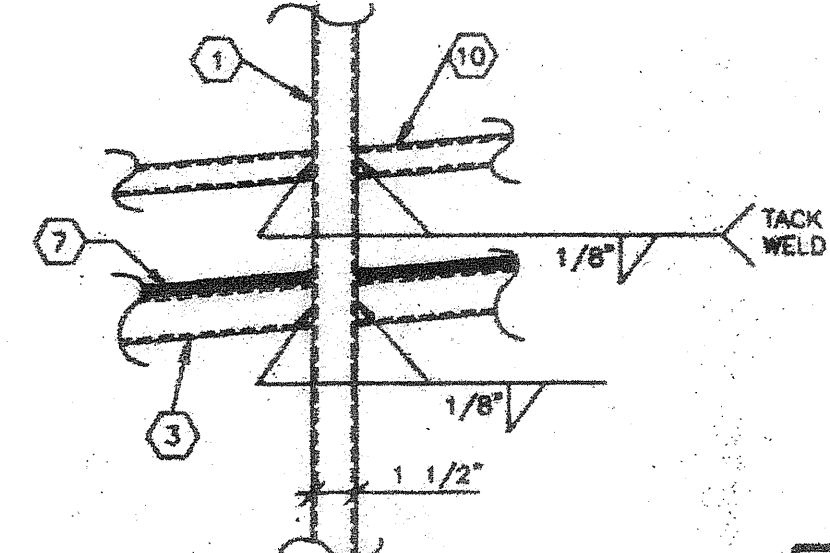
THE FINISH FLOOR OF RAMP MUST RISE FLAT SURFACE OF FINISH GRADE OF THE SITE SEE DETAIL 5 & DETAIL 3



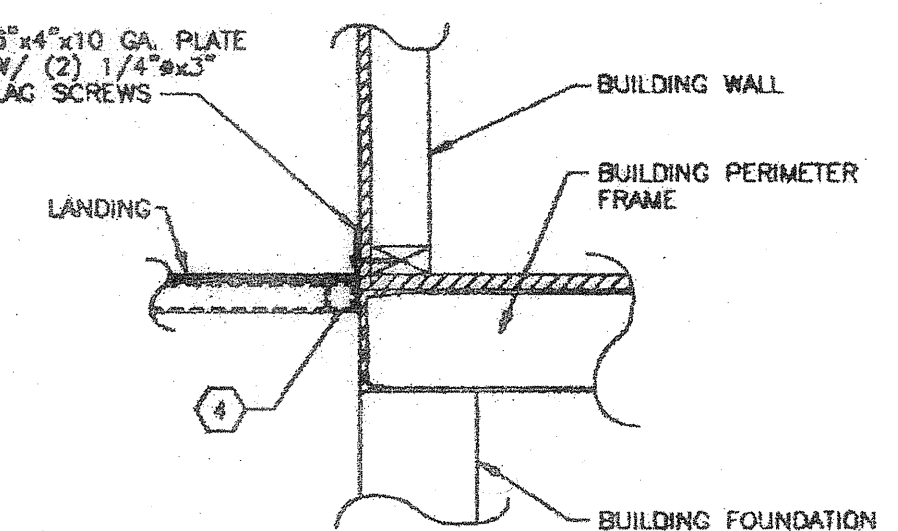
SECTION AT RAMP



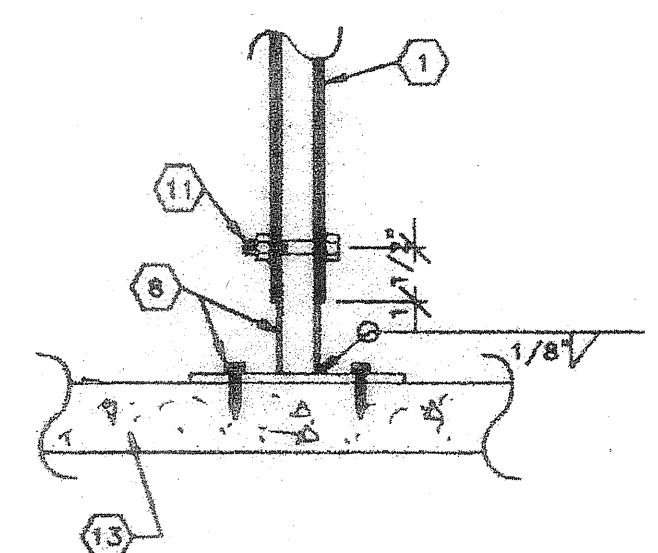
RAMP / LANDING TRANSITION



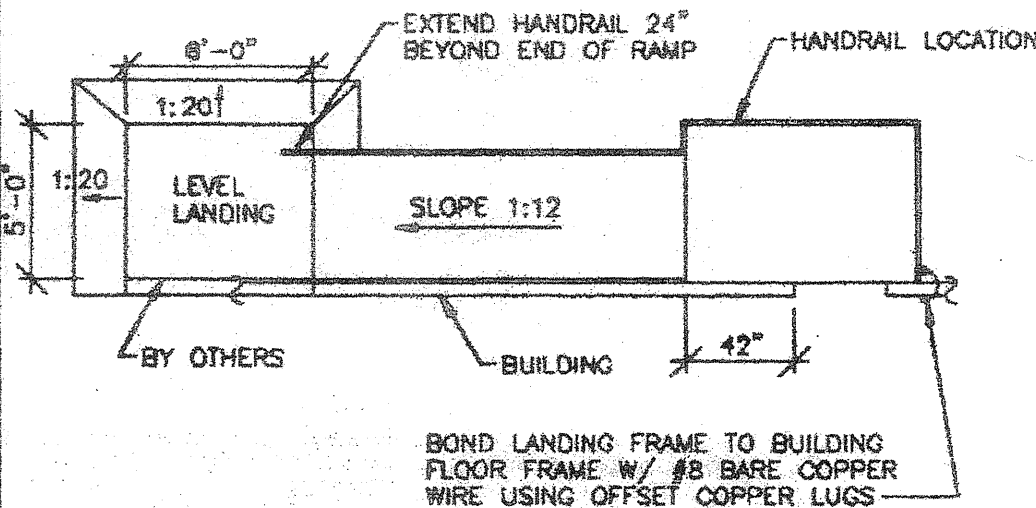
VERTICAL POST CONN.



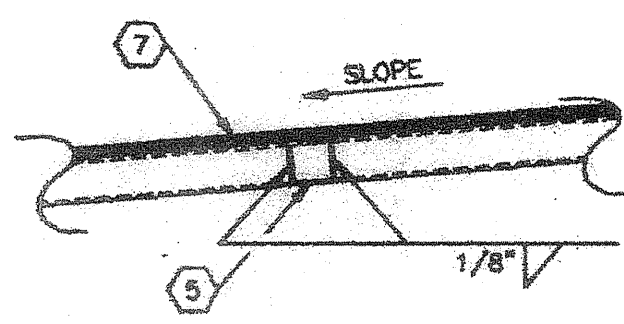
LANDING TO BUILDING



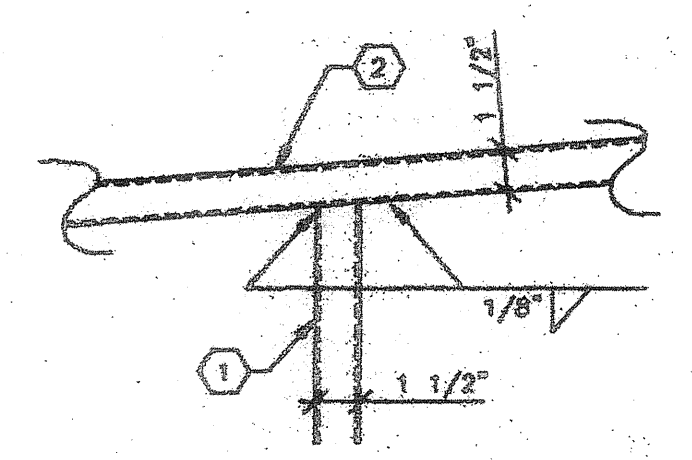
BASE



HANDRAIL LOCATIONS



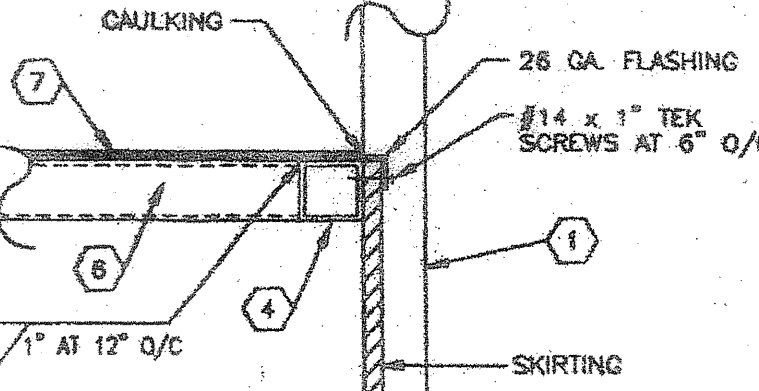
DECK & JOIST CONN.



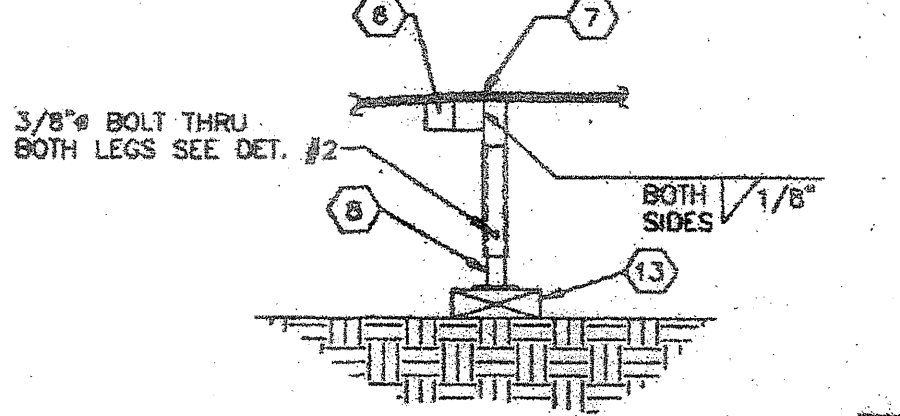
POST TO HANDRAIL

KEY NOTES

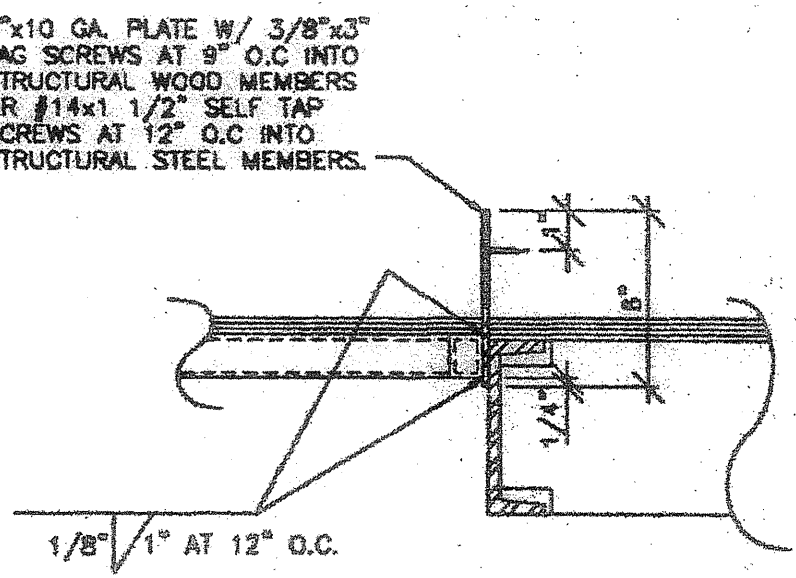
1. UPRIGHT TUBE - 1 1/2" x 1 1/2" x 12 GA. SQ. TUBE.
2. HANDRAIL TUBE - 1 1/2" x 1 1/2" x 16 GA. SQ. TUBE.
3. RAMP PERIMETER TUBE - 1 1/2" x 1 1/2" x 16 GA. SQ. TUBE.
4. LANDING PERIMETER TUBE - 2" x 2" x 16 GA. SQ. TUBE.
5. RAMP CROSS TUBE - 1 1/2" x 1 1/2" x 16 GA. SQ. TUBE.
6. LANDING CROSS TUBE - 2" x 2" x 16 GA. SQ. TUBE.
7. 3/4" PLYWOOD DECK W/ NON SKID SURFACE (TUF TREAD OR EQUAL).
8. ADJUSTABLE LEGS - 1 1/4" x 1 1/4" x 18 GA. SQ. TUBE W/ 3/8" x 1 1/4" THK. BASE PLATE WELDED TO LEG BASE PLATE TO HAVE (2) 5/16" HOLES FOR 1/4" LAG BOLTS.
9. SUPPORT PLATE - 1 1/4" x 1/8" THICK PLATE.
10. WHEELCHAIR RAIL - 1" x 1" SQ. TUBE TACK WELDED TO UPRIGHT MEMBERS.
11. 3/8" DIA. MACHINE BOLTS.
12. 6"x10"x10GA. PLATE W/ (2) 1/4"x3"x3" LAG SCREWS.
13. CONT. SILL PLATE 2x6 P.T.H.F.
14. SKIRTING - SAME AS BUILDING FINISH.
15. HANDRAIL MOUNTING BRACKET W/ 3/8" x 4" LAG BOLT TO STUD OR BLOCK.
16. DRIVE 1" DIA. x 15" G.I. PIPE AT 10'-0" MAX. DRILL SILL PLATE 1 1/2" DIA. MAX. HOLE. PIPE MAY BE DRIVEN AT A MAX. OF 45° ANGLE W/ VERTICAL.
17. THE STRENGTH OF STEEL TUBES IS 46000 PSI OR HIGHER.



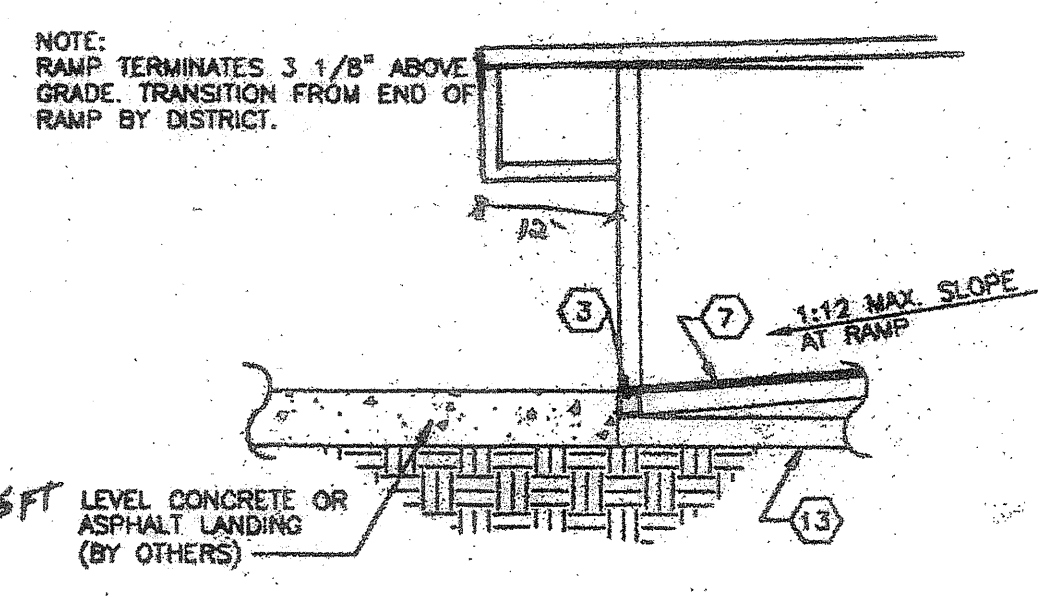
SKIRT FLASHING



BASE LEG

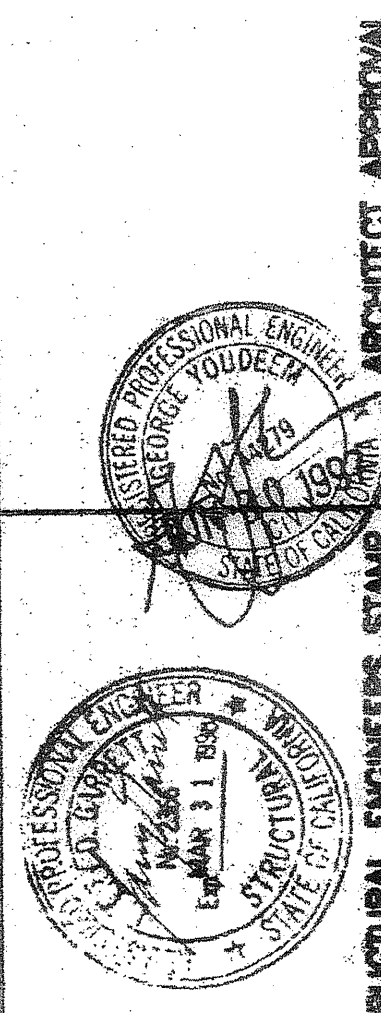


RAMP TO BUILDING



CONC. LANDING TO RAMP

THIS DRAWING AND THE MATERIAL CONTAINED THEREIN ARE THE PROPERTY OF M.S.I. INC. AND SHALL NOT BE REPRODUCED, COPIED OR OTHERWISE USED IN WHOLE OR IN PART TO ASSIST IN THE MAKING OF ANY OTHER DRAWING OR INSTRUMENTS APPROPRIATE OR FOR THE PURPOSE OF IMPROVING OR REPRODUCING OR PARTS THEREOF WITHOUT THE FULL KNOWLEDGE AND WRITTEN PERMISSION OF M.S.I. INC. MATERIAL CONTAINED HEREIN AND ORIGINATING WITH M.S.I. INC. SHALL BE THE PROPERTY OF M.S.I. INC. M.S.I. INC. SHALL BE THE PROPERTY OF M.S.I. INC.



MSI
MODULAR STRUCTURES INTERNATIONAL, INC.
1000 CENTRAL AVE. WESTCOTT, CALIFORNIA 95040
TEL: (408) 798-3438 FAX: (408) 798-1683

REGENCY ENGINEERING & CONSULTING GROUP
1000 CENTRAL AVE. WESTCOTT, CALIFORNIA 95040
TELEPHONE: (714) 263-9766
FAX: (714) 263-9765
A SUBSIDIARY OF REGENCY COMPANY, INC.

STATE AGENCY APPROVAL
PROJECT
24'x40', 36'x40', & 48'x40'
MODULAR CLASSROOM BUILDING

STATE AGENCY APPROVAL
JOB # 96-1310
DATE 12/9/96
DRAWN BY B.N.
SCALE NONE
APPROVED
REVISIONS

STATE AGENCY APPROVAL
IDENTIFICATION STAMP
DIV. OF THE STATE ARCHITECT
APP03-117549
ACV PLS SS TN
Date OCT 11 2016

TITLE
RAMP & LANDING PLANS & DETAILS

SHEET NO.
R-3

PC-323