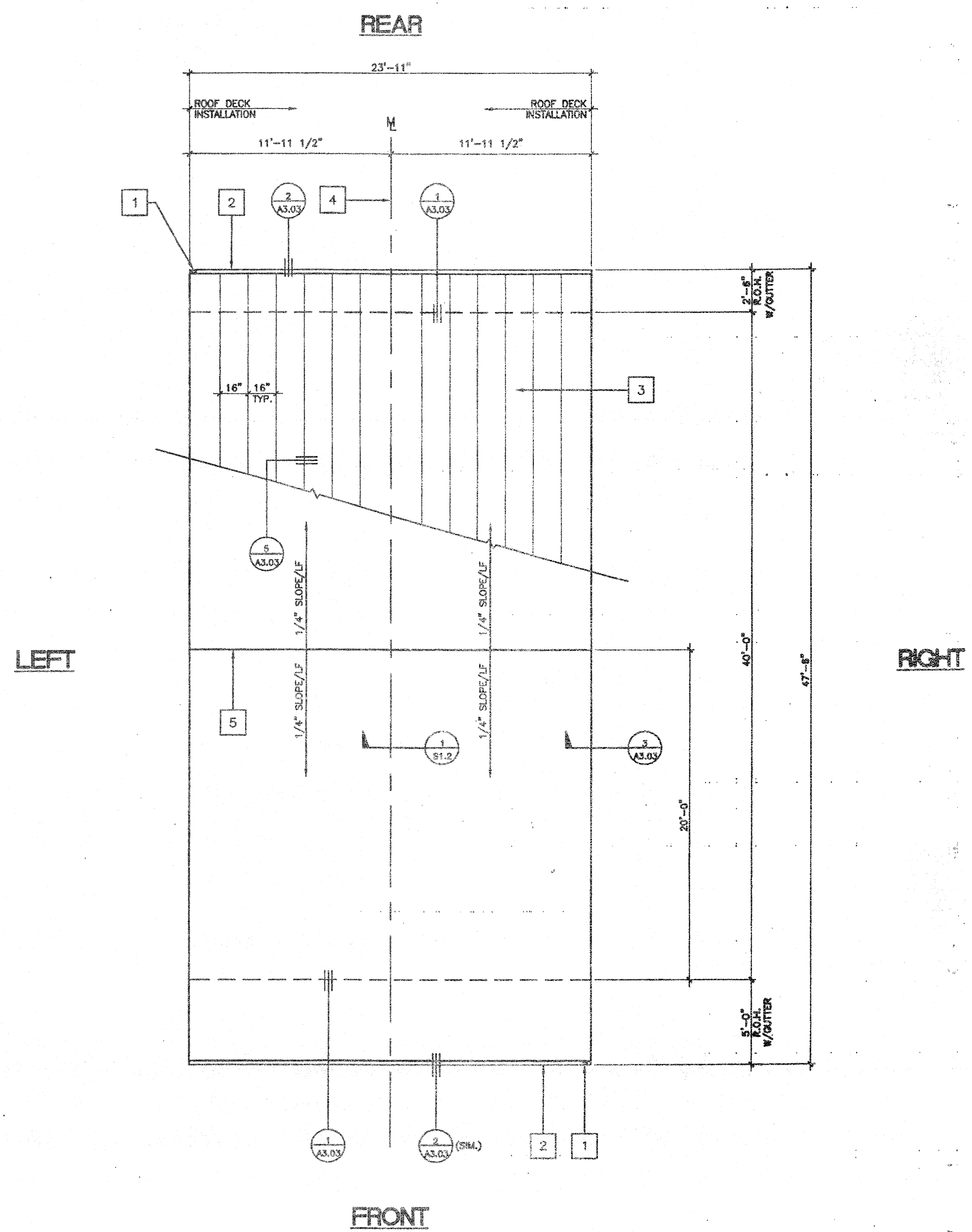


KEY NOTES

- 1 DOWNSPOUT (TYPICAL 3" X 2" X 26GA)
- 2 CONTINUOUS GUTTER 26GA.
- 3 22GA. MIN. INTERLOCKING ROOF PANELS (TYP)
- 4 MODLINE
- 5 RIDGELINE

NOTES

- 1. BUILDING HOUSING GROUP E OCCUPANCIES SHALL HAVE ROOF COVERINGS AS SPECIFIED IN TABLE 15A. C.B.C. CLASS A



ROOF PLAN (DUAL SLOPE) (24'X40')

SCALE: 1/4" = 1'-0"

AGENCY TRACKING NO. 63321-154
FILE NO. 15-6

IDENTIFICATION STAMP
DIV. OF THE STATE ARCHITECT
OFFICE OF REGULATION SERVICES
03-117035
AC / FLS / SS / 01
DATE 0/28/2016

IDENTIFICATION STAMP
DIV. OF THE STATE ARCHITECT
OFFICE OF REGULATION SERVICES
04 105455
AC / FLS / SS / 11/3
DATE JUL 17 2003

~~IDENTIFICATION STAMP
DIV. OF THE STATE ARCHITECT
OFFICE OF REGULATION SERVICES
04 105455
AC / FLS / SS / 11/3
DATE JUL 17 2003~~

REVISIONS	Electrical Engineer's Seal	Mechanical Engineer's Seal	PC Professional of Record Seal	Architect's Seal

Professional seals and stamps for the project, including a 'LICENSED ARCHITECT' seal for Fred Warren and a 'PC 2001' seal for William Scottsman.

MODTECH™
2830 BARRETT AVENUE FAX (909) 943-4014
PERRIS, CALIF. 92572 FAX (909) 940-0427

PROJECT NUMBER: 4736
WILLIAM SCOTTSMAN
ROOF PLAN

© MODTECH, INC. 2002
ALL RIGHTS RESERVED

DRAWN BY: GL
DATE: 07/07/03
CHECKED BY:
DATE:
MODTECH Index No.
A3.01