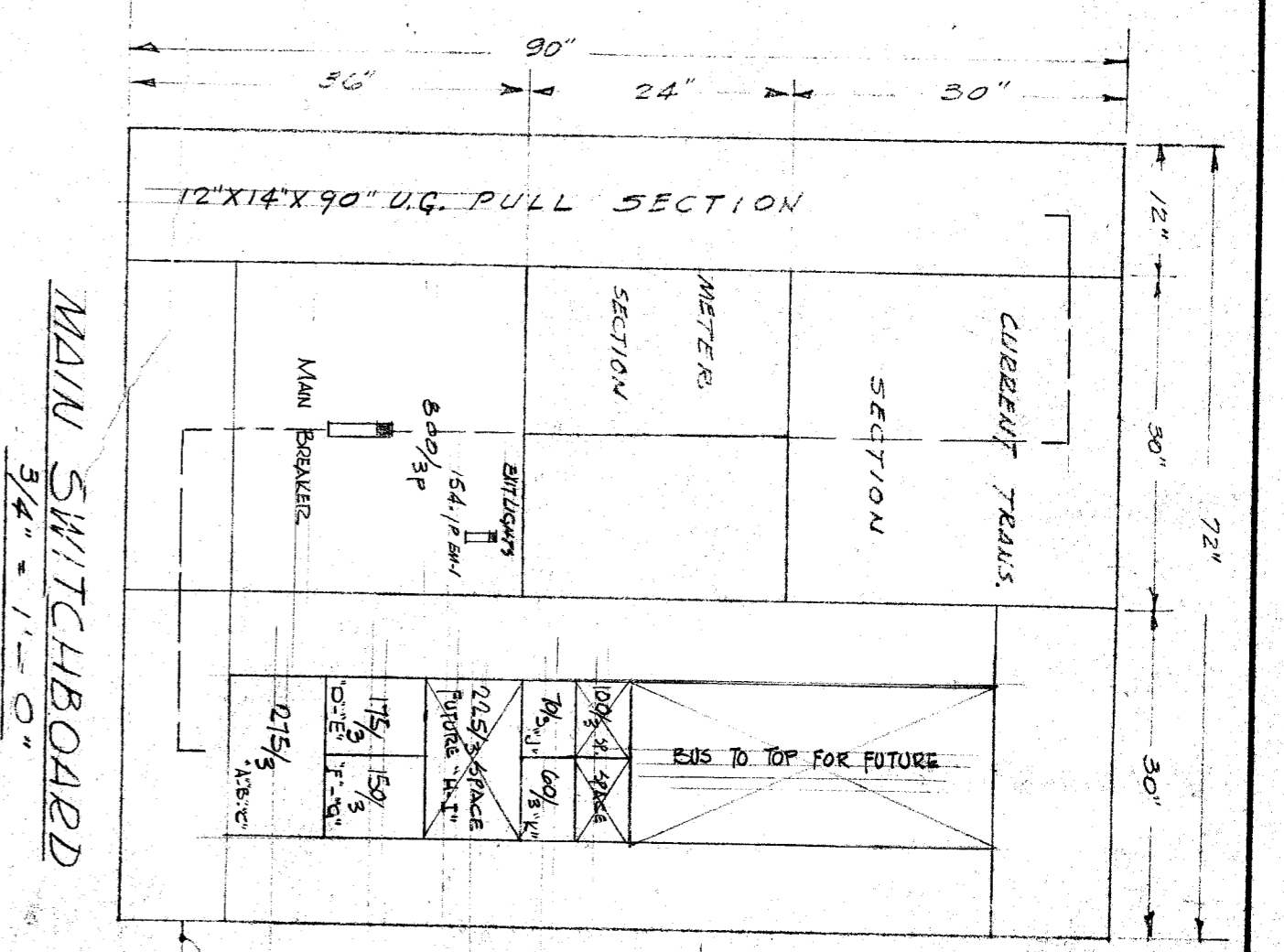
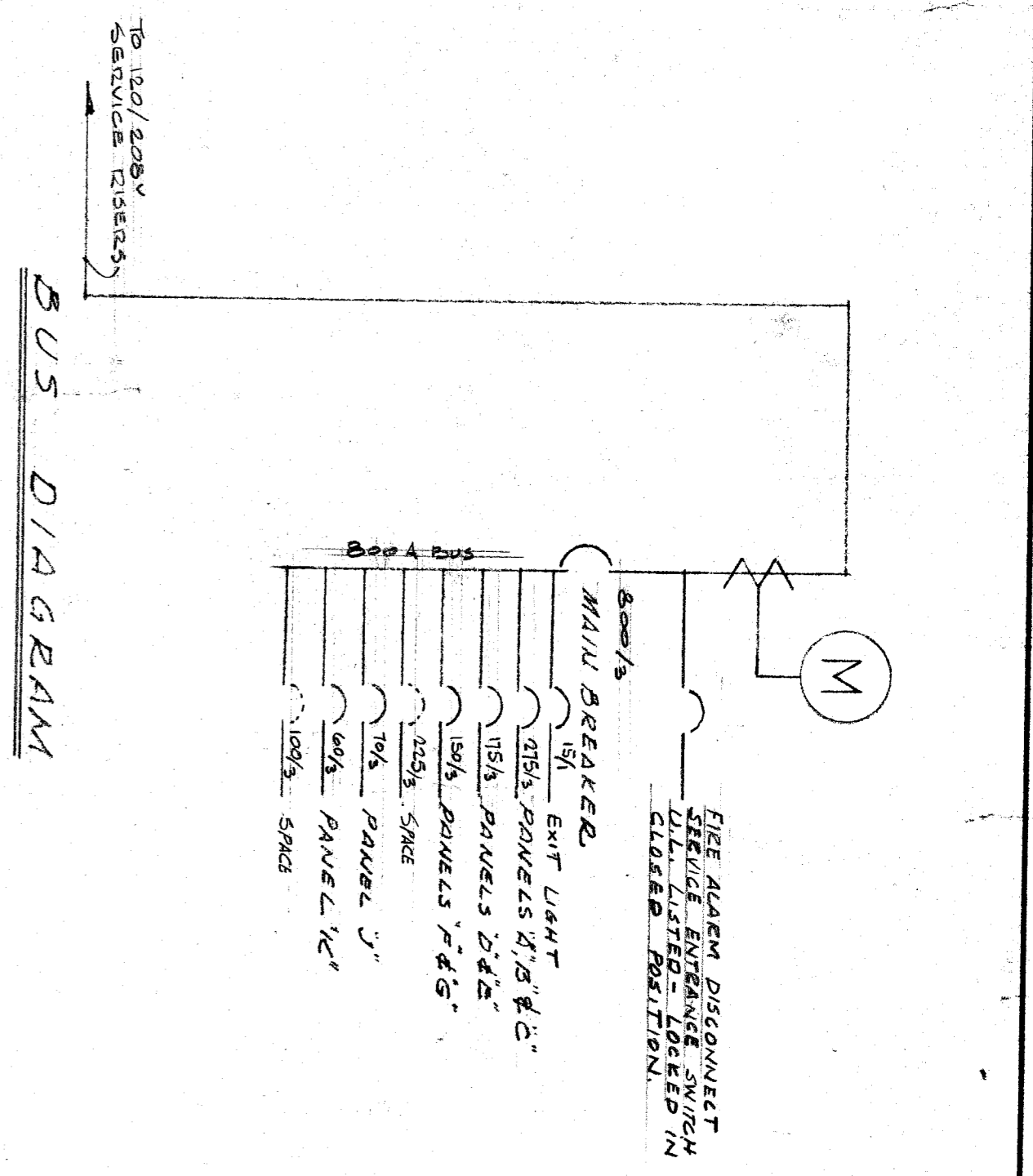
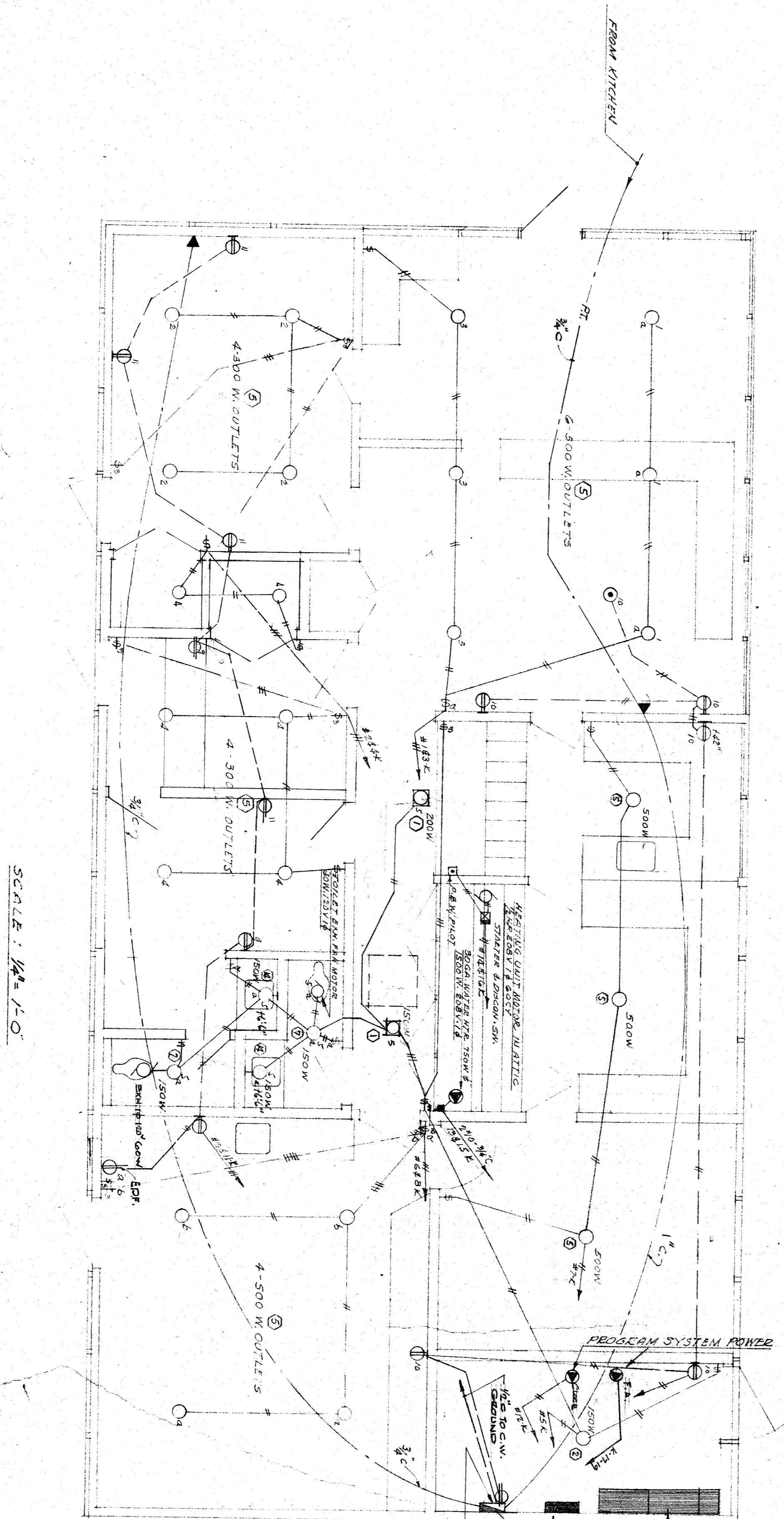


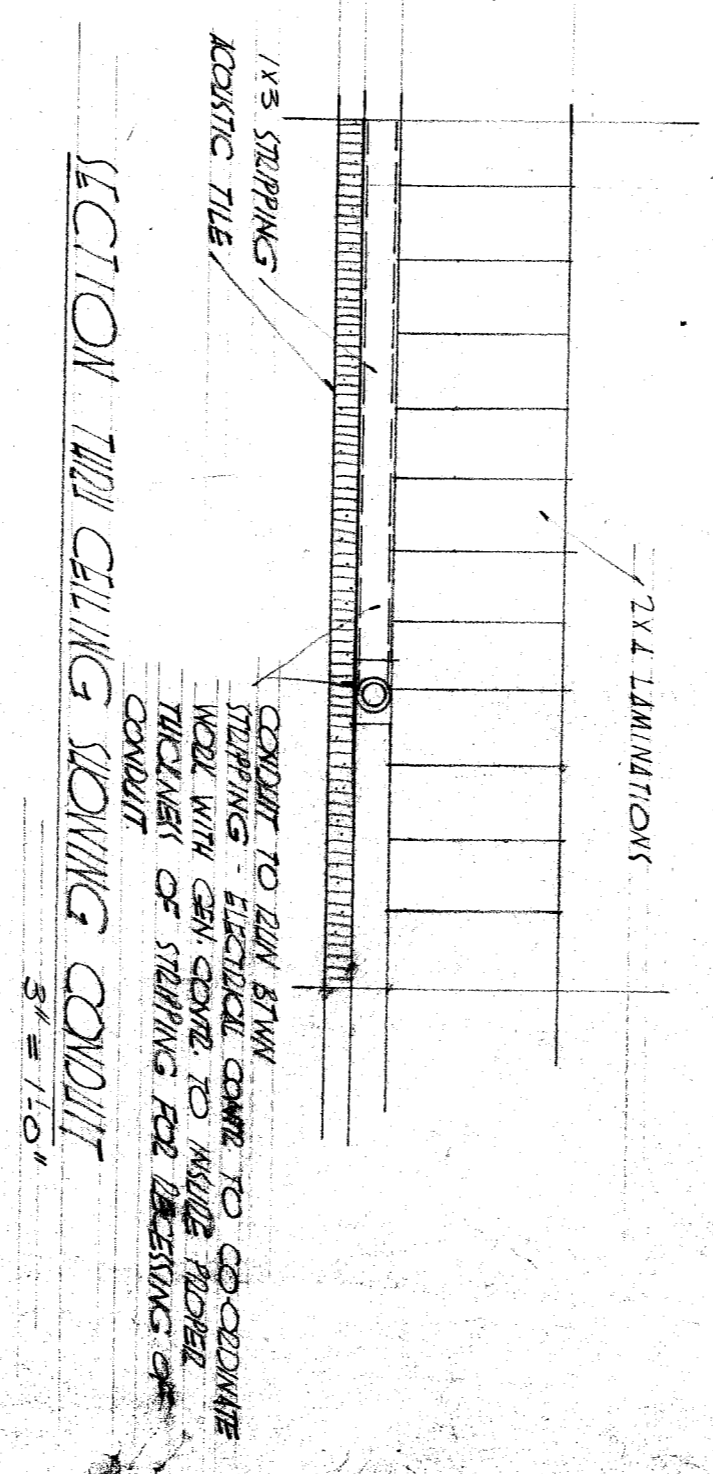
| PANEL J | | | | | PANEL K | | | | |
|---|---------|-------|--------|---------|---|---------|-------|--------|---------|
| NO. | OUTLETS | WATTS | NO. OF | REMARKS | NO. | OUTLETS | WATTS | NO. OF | REMARKS |
| | | | | | | | | | |
| 1 | 3 | 1500 | 2 | | 1 | 3 | 1500 | 2 | |
| 2 | 3 | 1500 | 2 | | 2 | 3 | 1500 | 2 | |
| 3 | 3 | 1500 | 2 | | 3 | 3 | 1500 | 2 | |
| 4 | 3 | 1500 | 2 | | 4 | 3 | 1500 | 2 | |
| 5 | 3 | 1500 | 2 | | 5 | 3 | 1500 | 2 | |
| 6 | 3 | 1500 | 2 | | 6 | 3 | 1500 | 2 | |
| 7 | 3 | 1500 | 2 | | 7 | 3 | 1500 | 2 | |
| 8 | 3 | 1500 | 2 | | 8 | 3 | 1500 | 2 | |
| 9 | 3 | 1500 | 2 | | 9 | 3 | 1500 | 2 | |
| 10 | 3 | 1500 | 2 | | 10 | 3 | 1500 | 2 | |
| 11 | 3 | 1500 | 2 | | 11 | 3 | 1500 | 2 | |
| 12 | 3 | 1500 | 2 | | 12 | 3 | 1500 | 2 | |
| 13 | 3 | 1500 | 2 | | 13 | 3 | 1500 | 2 | |
| 14 | 3 | 1500 | 2 | | 14 | 3 | 1500 | 2 | |
| 15 | 3 | 1500 | 2 | | 15 | 3 | 1500 | 2 | |
| 16 | 3 | 1500 | 2 | | 16 | 3 | 1500 | 2 | |
| 17 | 3 | 1500 | 2 | | 17 | 3 | 1500 | 2 | |
| 18 | 3 | 1500 | 2 | | 18 | 3 | 1500 | 2 | |
| 24/00/208 X 173 = 674 BREAKER 100A 5P N-A. | | | | | 21/00/206 X 173 = 604 BREAKER 100A 5P N-A. | | | | |



NOTE:
SWITCHBOARDS SHALL
HANG FROM GRAY W/
BASELITE NAMEPLATES
FOR ALL BREAKERS.
DEPTH OF BOARD
SHALL BE 14"



SCALE: 1/4" = 1'-0"



DIVISION OF ARCHITECTURE

STATE OF CALIFORNIA - DEPARTMENT OF PUBLIC WORKS
DIVISION OF ARCHITECTURE
18096 APPROVED DEC 22 1958
APPROVED BY: *Maxwell Stillberg*

BOARD OF EDUCATION

James J. Gumpster
11/24/58

ELECTRICAL FLOOR PLAN ADMINISTRATION
2122 DUINE CIRCLE

WHITNEY BIGGAR ARCHITECT
MEMBER AMERICAN INSTITUTE OF ARCHITECTS
3601 STOCKDALE HIGHWAY
BAKERSFIELD, CALIFORNIA
29285 REGISTRATION C-1128

PROJECT NO. 4728
DRAWN BY: *W. J. Gumpster*
CHECKED BY: *W. J. Gumpster*
DATE: 11/24/58
SHEET 14 OF 58