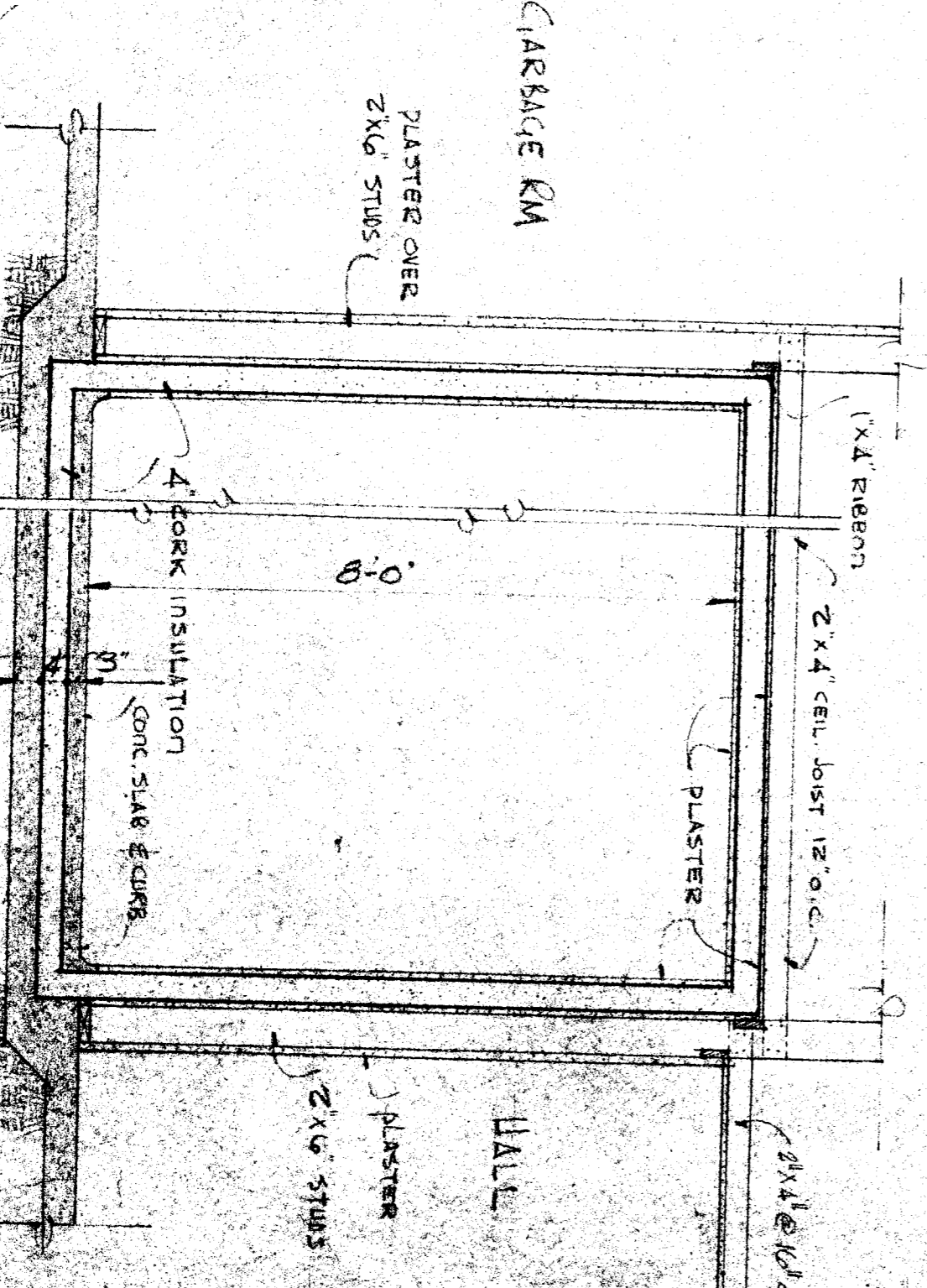
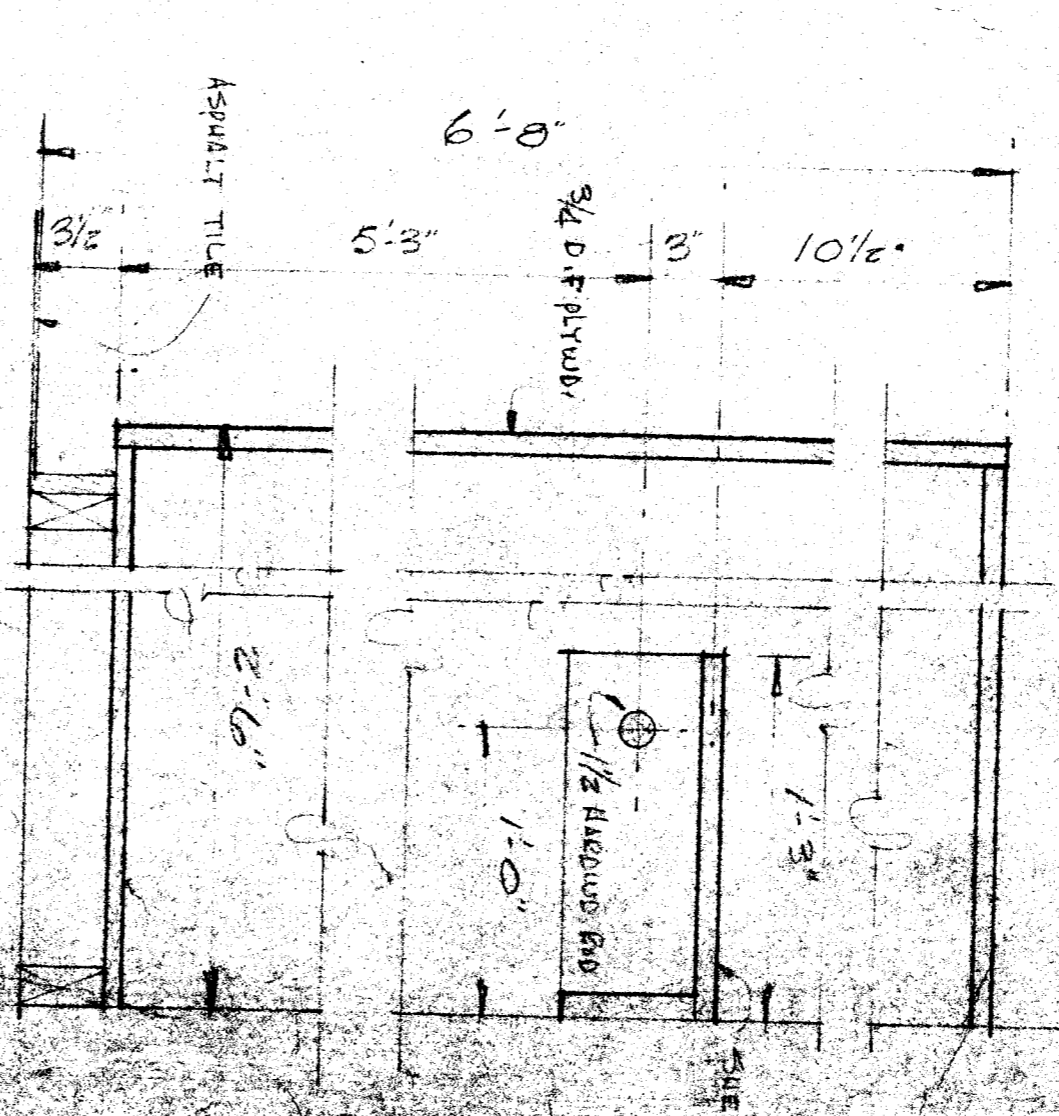
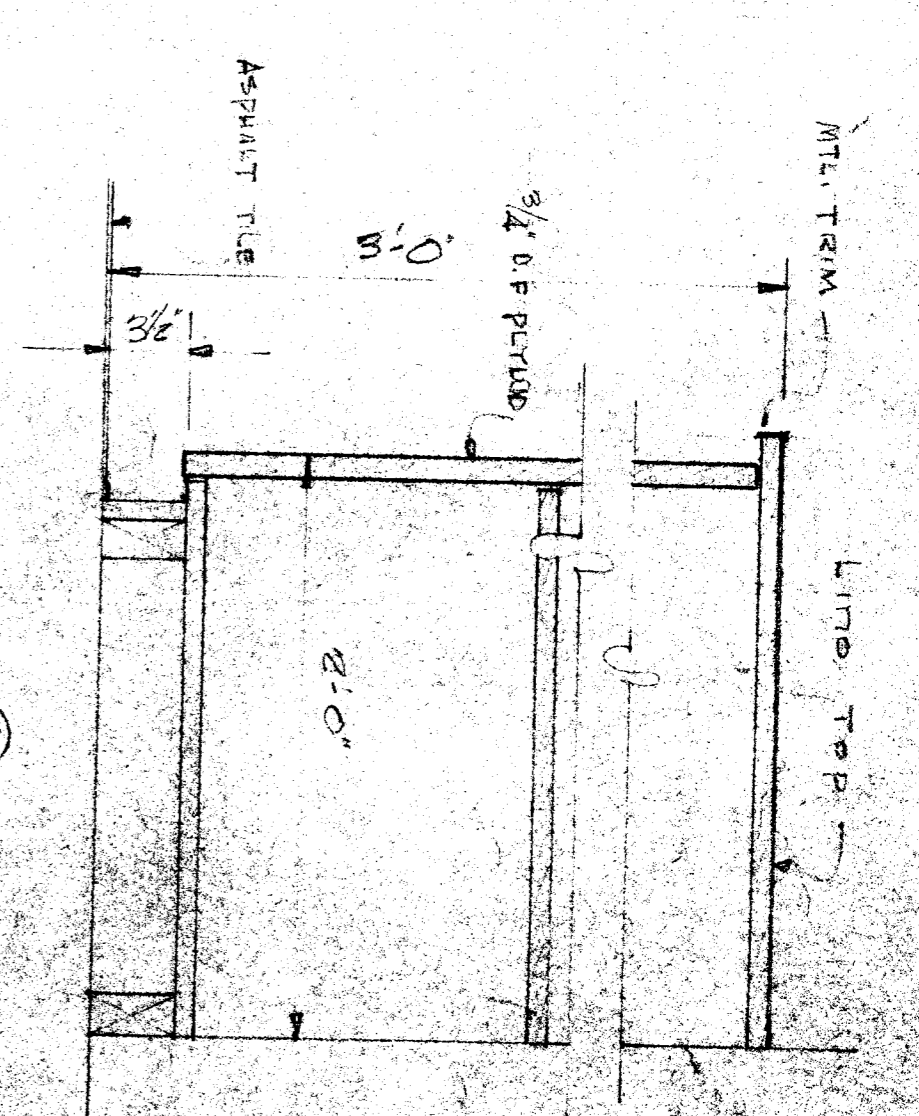


NOTE: ALL STUDS TO BE 2"x4". STUDS UNLESS SHOWN OTHERWISE



DIVISION OF ARCHITECTURE  
 1-18-19  
 APPROVED DEC 8 9 1938  
 M. W. Schlemmer

BOARD OF EDUCATION  
 J. H. ...  
 1/1/38

PARK DRIVE SCHOOL  
 PARKFIELD CITY SCHOOL DISTRICT  
 CLIFTON, CALIFORNIA

FLOOR PLAN & ELEVATIONS  
 UNITS THREE & FOUR

Whitney Biggar Architect  
 MEMBER AMERICAN INSTITUTE OF ARCHITECTS  
 3901 STOCKDALE AVE. ALBANY  
 BAKERSFIELD, CALIFORNIA  
 1938 REGISTRATION