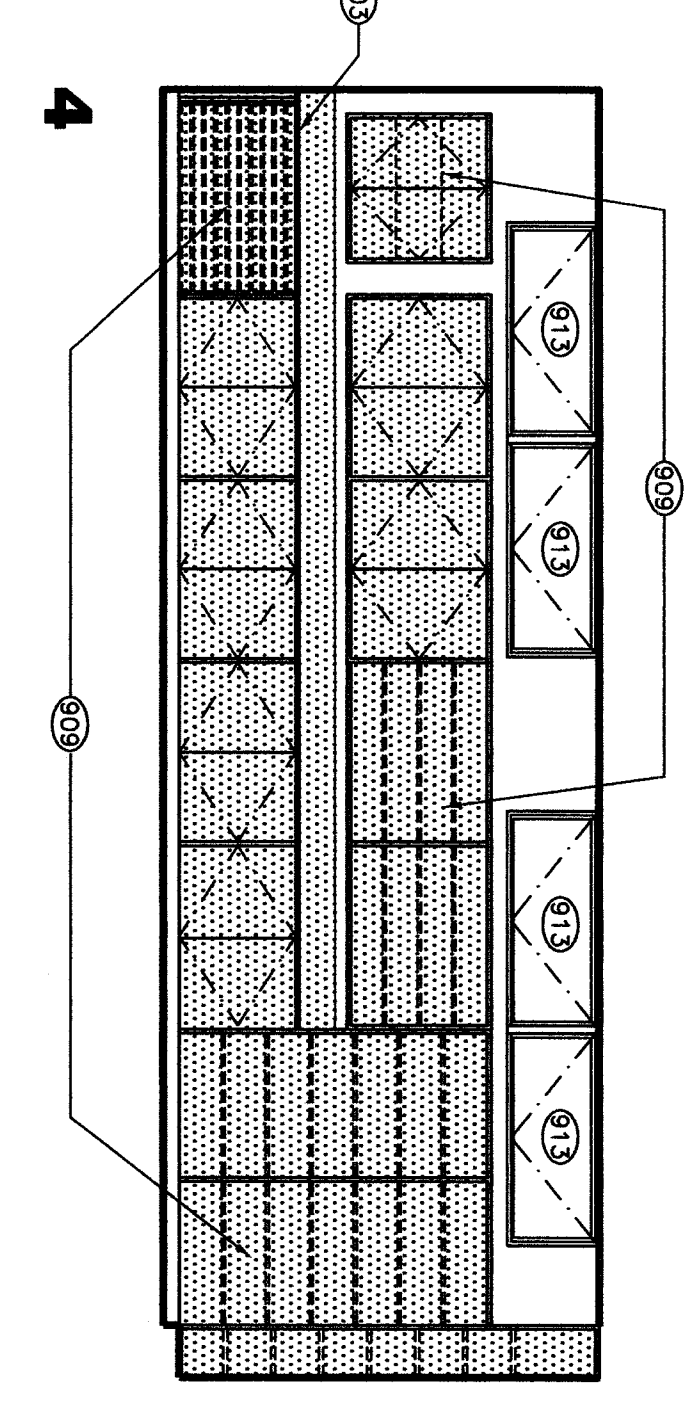
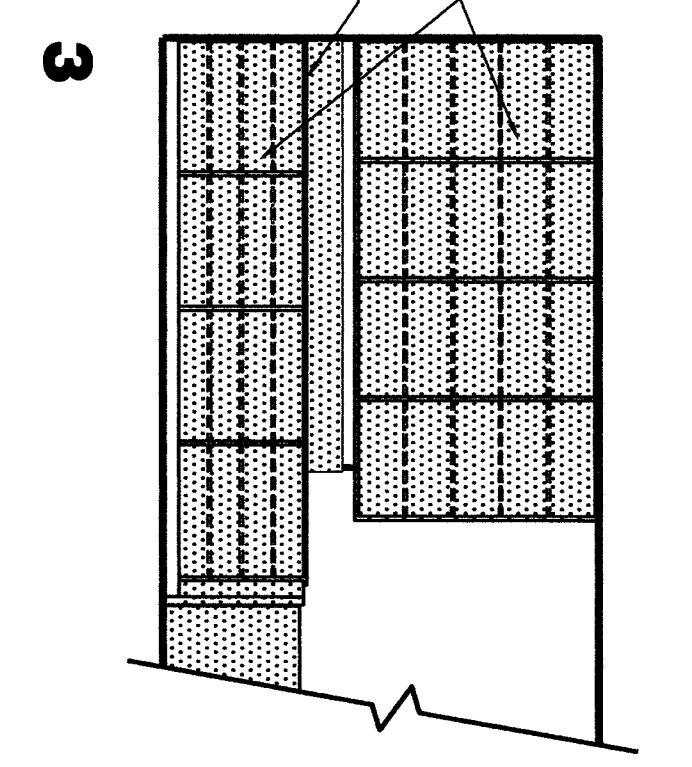
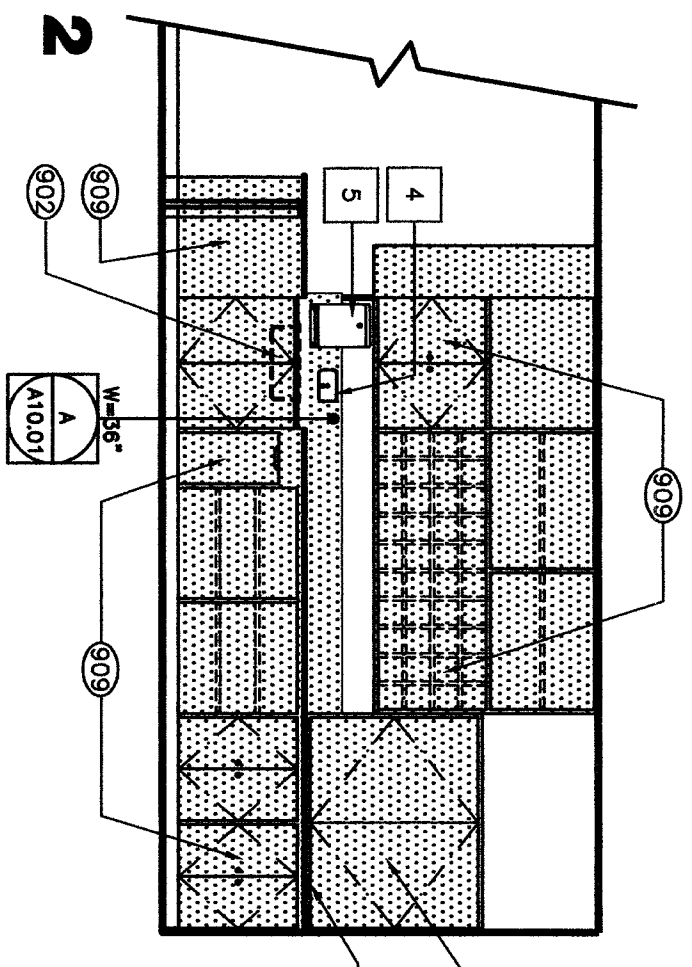


1 ISLAND STORAGE (TALL)

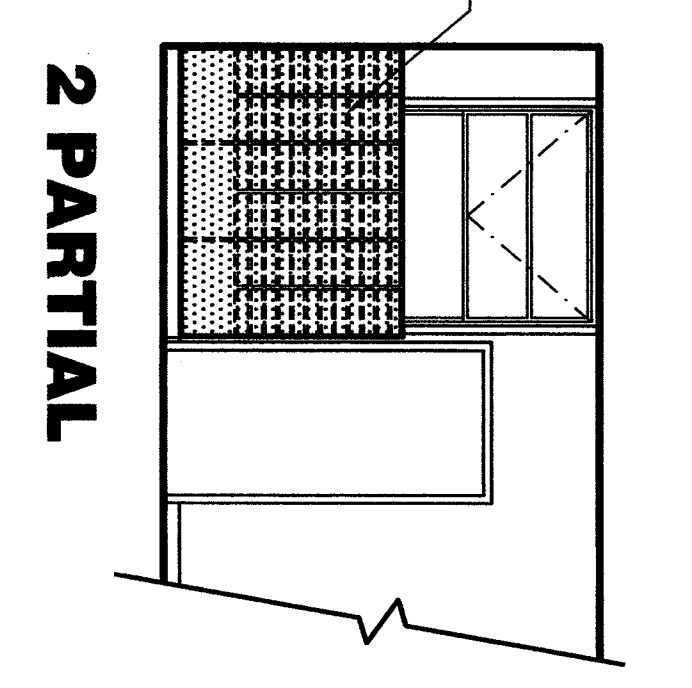
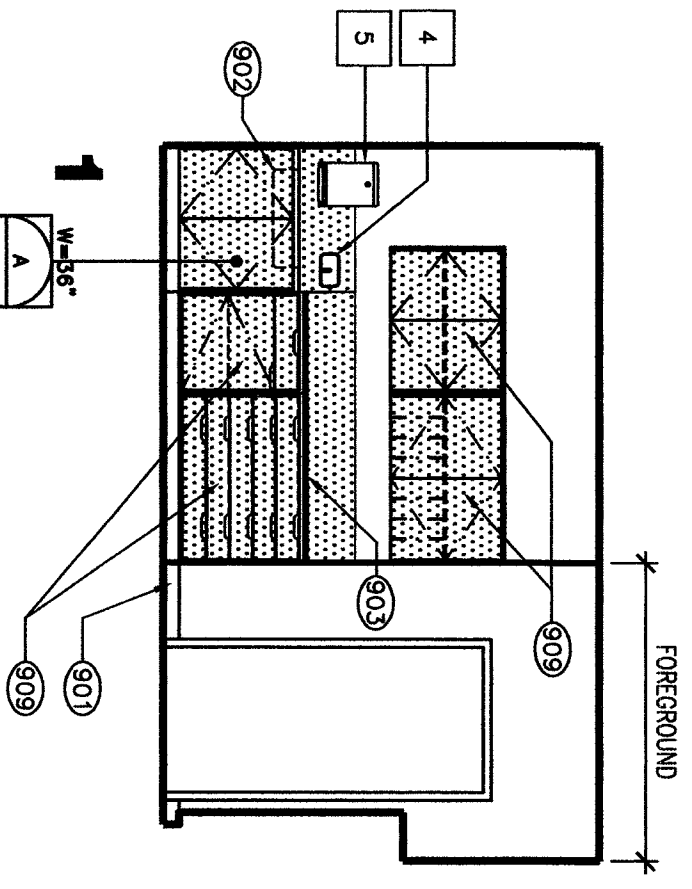
2 ISLAND STORAGE (LOW)

101 BOOK & SUPPLY ROOM



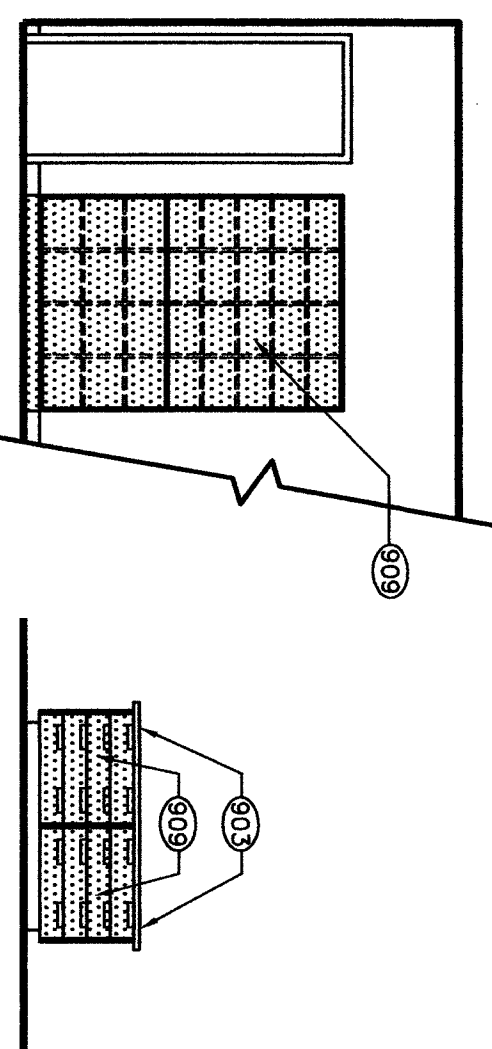
101 BOOK & SUPPLY ROOM

102 FACULTY WORK RM.

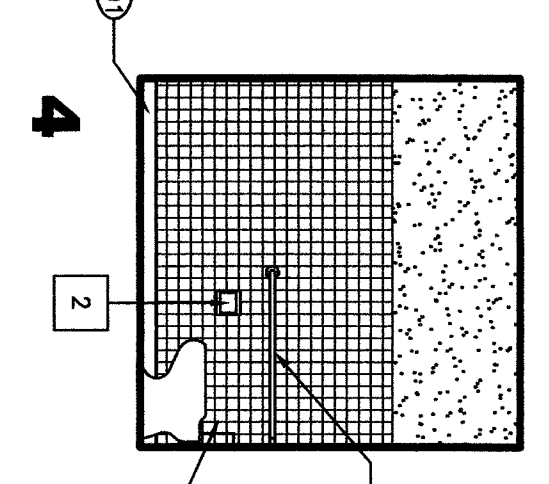
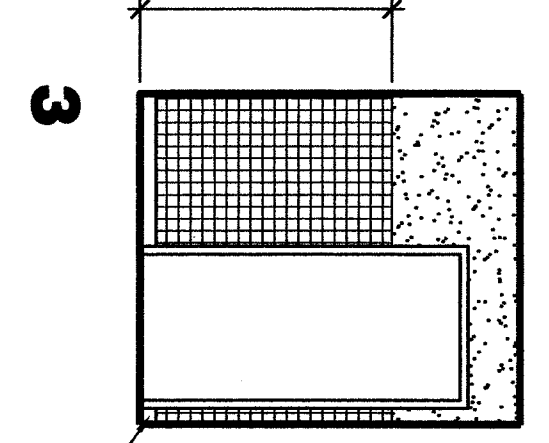
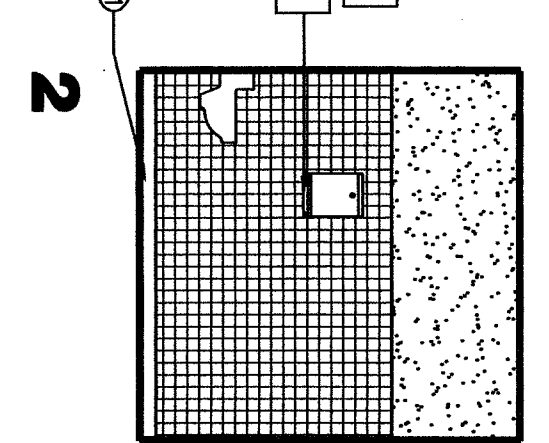
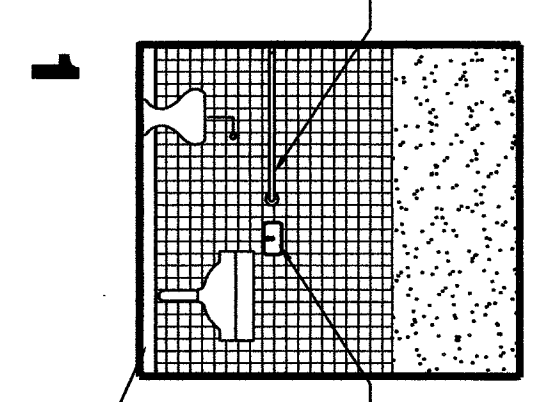


102 FACULTY WORK RM.

102 FACULTY WORK RM.



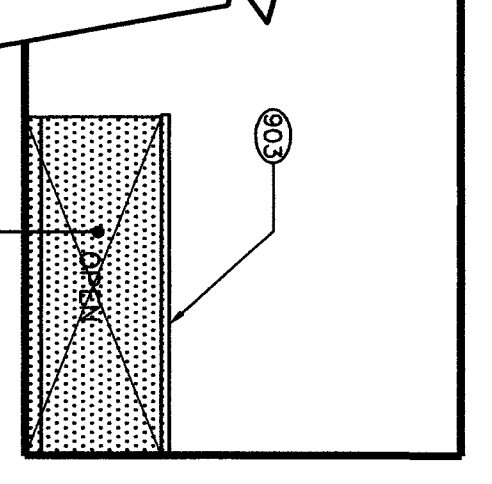
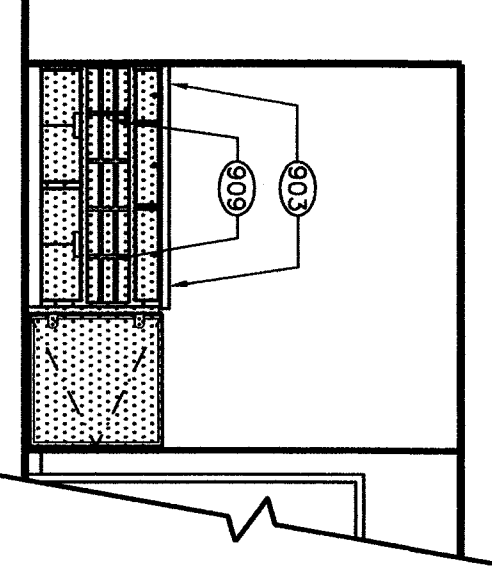
1 & 4 WORK TABLE



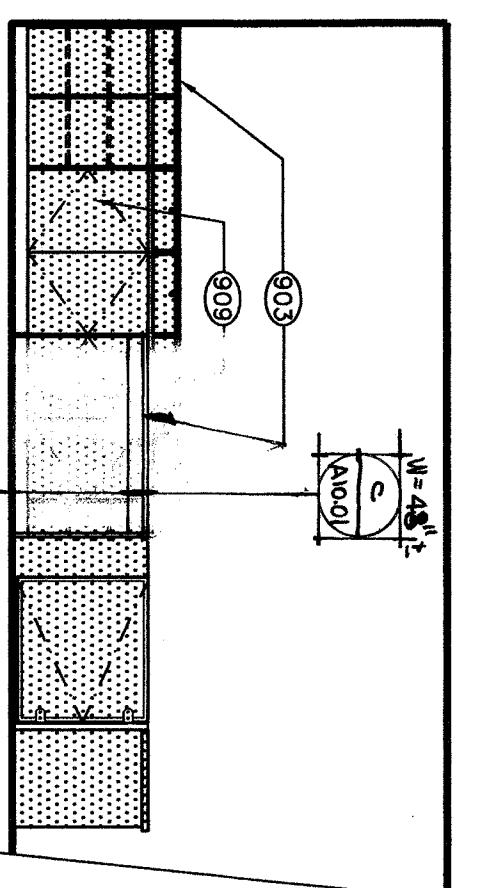
102 FACULTY WORK RM.

105 NURSE TOILET

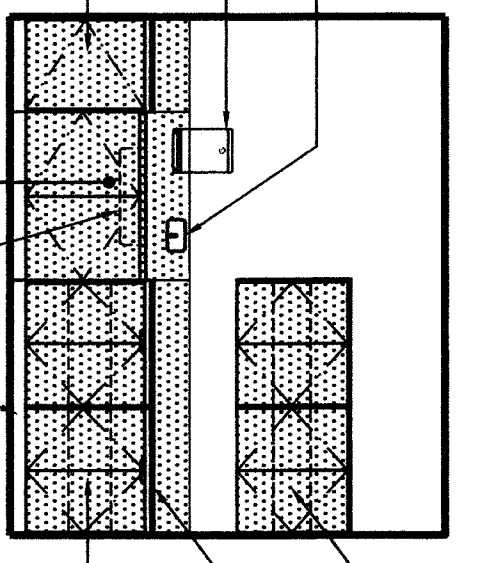
107 SECRETARY



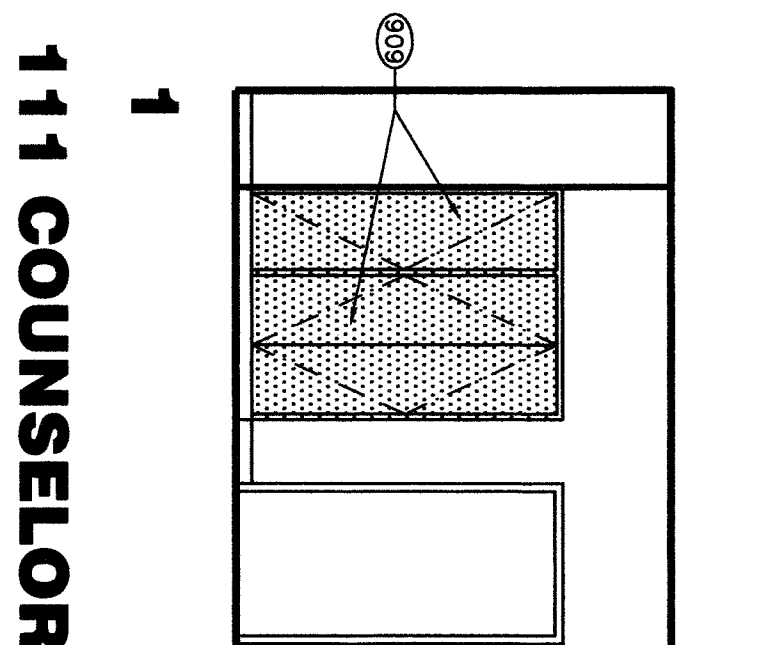
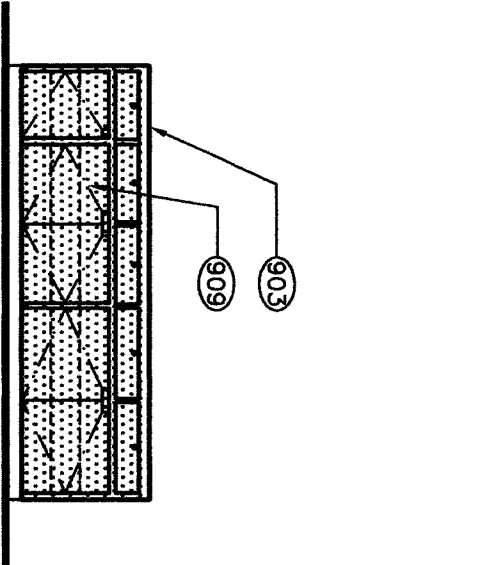
USE ELEMENTARY MOUNTING HEIGHTS FOR TOILET ROOM FIXTURES AND ACCESSORIES. REFER TO DETAIL 1/A10.02



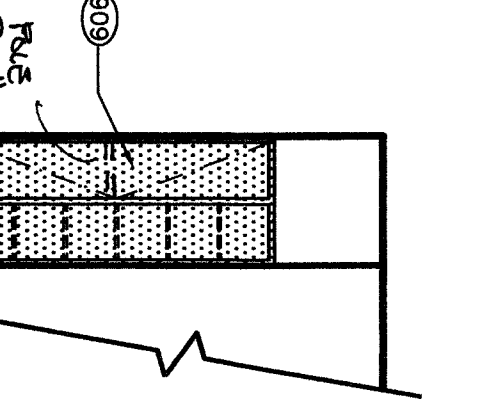
108 PUBLIC AREA



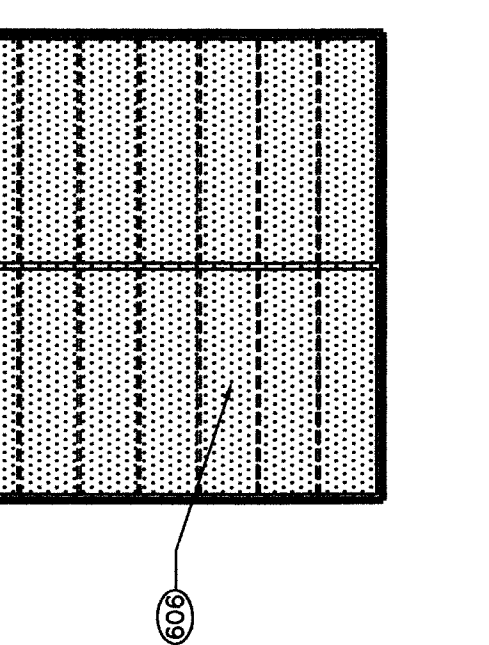
109 HEALTH



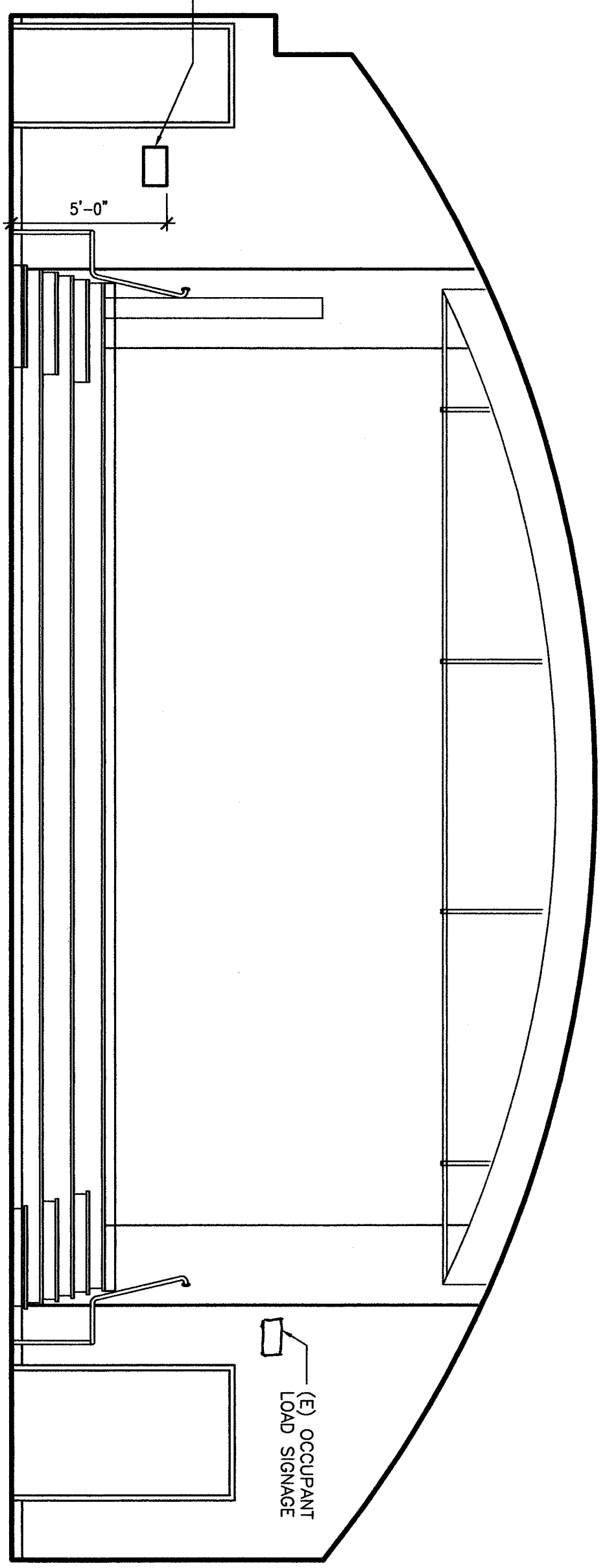
111 COUNSELOR



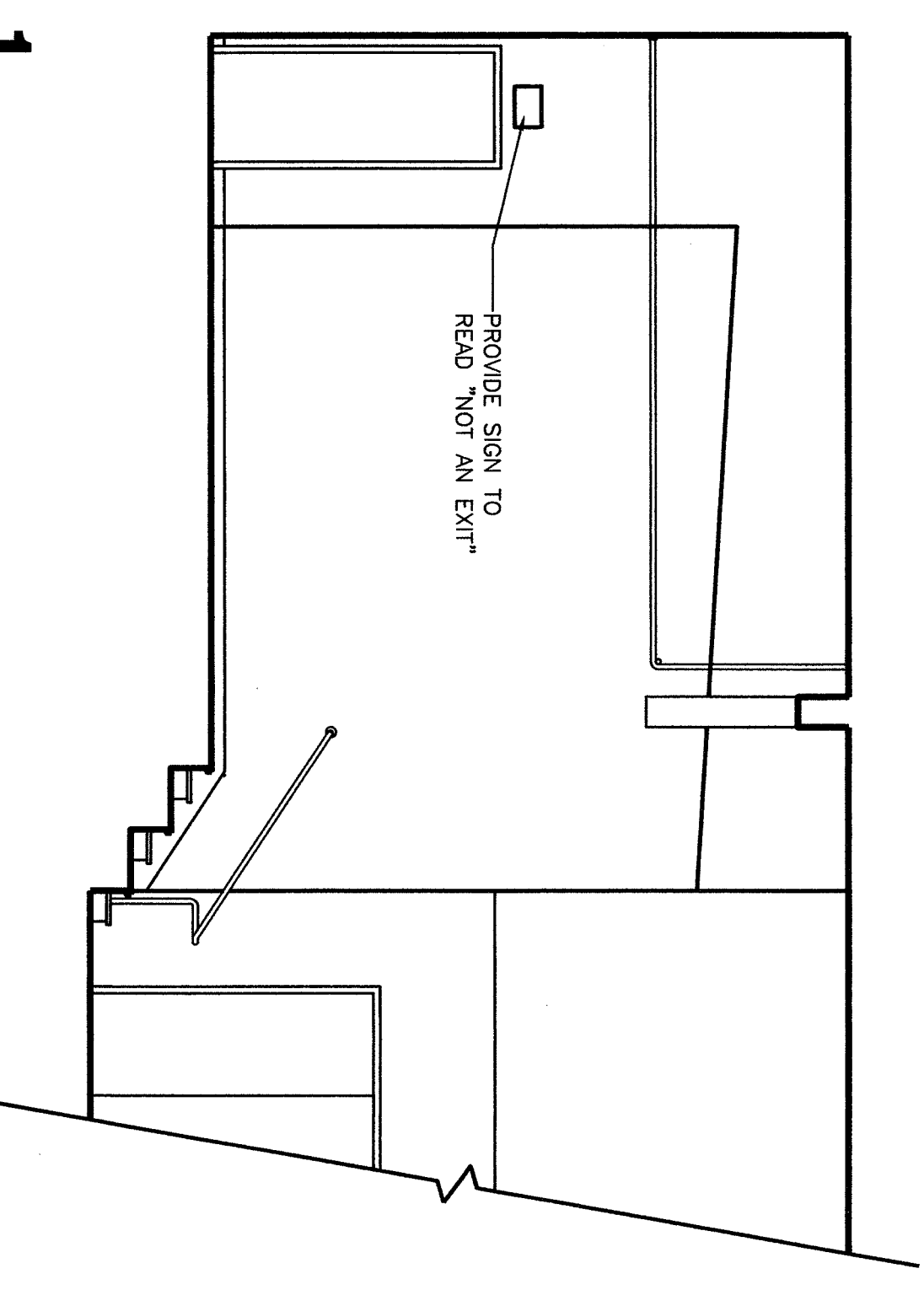
112 PRINCIPAL



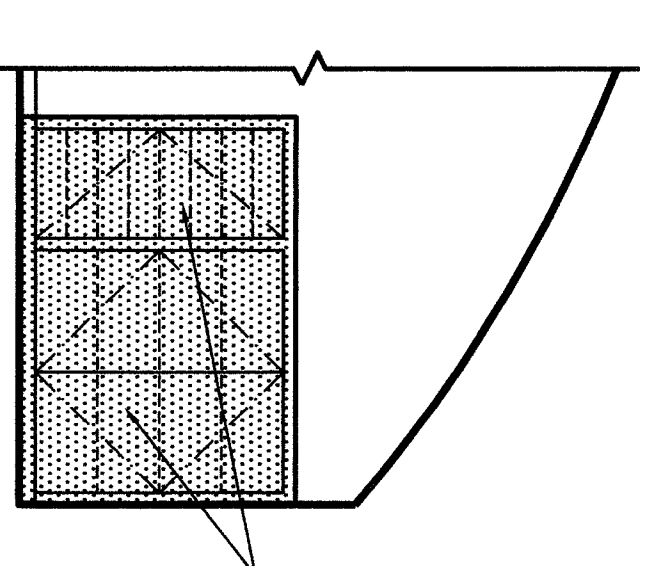
113 VISUAL AID STORAGE



201 MULTIPURPOSE



202 PLATFORM



203 INSTRUMENT STORAGE

BUILDING 100 & 200 INTERIOR ELEVATIONS

KEYNOTES

- NOTE: KEYNOTES IN THIS LIST MAY NOT NECESSARILY OCCUR ON THIS SHEET.
- 901 BASE, REFER TO FINISH SCHEDULE.
  - 902 PLUMBING FIXTURE, REFER TO PLUMBING DRAWINGS.
  - 903 PROVIDE COUNTERTOP AND 6" BACKSPASH U.O.N.
  - 904 PROVIDE MARBLEBOARD, REFER TO DETAIL 1/A10.02.
  - 905 PROVIDE FREE EXTENSIONER, 24" TO 6" WITH
  - 906 PROVIDE 1/2" GARDNER RACK, 1" O" EITHER SIDE OF
  - 907 PLUMBING FIXTURE, REFER TO DETAIL 2/A10.02.
  - 908 PROVIDE CLOSURE PANEL, WHERE EASLE REMOVED,
  - 909 REFER TO DETAIL 23/A10.02.
  - 910 REUPHRESH (E) CABINETS, REFER TO SPECS.
  - 911 PROVIDE TILE BEHIND MIRROR.
  - 912 (E) TACKBOARD TO REMAIN.
  - 913 (E) PLUMBING FIXTURE TO REMAIN.
  - 914 (E) WINDOW TO REMAIN.
  - 915 PROVIDE WINDOWS.
  - 916 REMOVE (E) EASLE, PATCH WALL BEHIND
  - 917 REMOVE (E) ADJACENT.
  - 918 PATCH AND REPAIR CERAMIC TILE TO MATCH (E) ADJACENT
  - 919 WHERE REPAIR OCCURS.
  - 920 PROVIDE FINISH AT INFLU TO MATCH (E) ADJACENT.
  - 921 PROVIDE WIREMESH, REFER TO DET. 1/A10.02.
  - 922 AND ELECTRICAL DRAWINGS FOR ADDITIONAL INFO.

MATERIAL LEGEND

- NOTE: ALL SYMBOLS AND PATTERNS MAY NOT NECESSARILY OCCUR ON THIS SHEET.
- SCOPE OF NEW WORK, REFER TO KEYNOTES OR PLANS FOR TYPE OF SCOPE.
- (E) WALL FINISH ENAMEL PAINT U.O.N.
  - CERAMIC TILE
  - PLASTER FINISH
  - CMU

ACCESSORY LEGEND

- NOTE: ACCESSORIES IN THIS LIST MAY NOT NECESSARILY OCCUR ON THIS SHEET.
- 1 STAINLESS STEEL GRAB BAR, ATTACH PER DETAIL 11/A10.02
  - 2 SEMI-RECESSED TOILET TISSUE DISPENSER, OWNER FURNISHED, CONTRACTOR INSTALLED.
  - 3 STAINLESS STEEL FRAMED MIRROR WITH SHELF.
  - 4 SURFACE MOUNTED LIQUID SOAP DISPENSER.
  - 5 SURFACE MOUNTED PAPER TOWEL DISPENSER.
  - 6 SURFACE MOUNTED TOILET-SEAT COVER.
  - 7 SURFACE MOUNTED FRAMED MIRROR.
  - 8 RECESSED FANMIKE NAPKIN DISPOSAL.
  - 9 ELECTRIC HAND DRYER.

NOTE: REFER TO DETAILS 1/A10.02 AND 4/A10.02 FOR MOUNTING HEIGHTS AND LOCATIONS.



**Bakersfield**  
5500 Ming Avenue, Suite 450, Bakersfield, CA 93309  
661.836.4300  
fax 661.836.4311

**San Jose**  
500 Park Ave, Suite 200  
408.524.8441  
San Jose, CA 95110  
fax 408.524.8444

**San Luis Obispo**  
415 Bond Street, Suite 3-8  
San Luis Obispo, CA 93401  
805.861.0133  
fax 805.861.0134

**Oakland**  
350 Park Square Plaza, Suite 300  
Oakland, California 94612  
fax 510.881.0874

**Principal Architects**  
1000 Broadway, Suite 414,  
New York, NY 10013  
New York, NY 10013  
Robert I. Walker, AIA, C-18079  
fax 212.675.1100

FILE NO. 15-6  
DEPARTMENT STAMP  
DATE 8-26-03  
DATE 8-26-03

**MODERNIZATION**  
FOR  
**COLONEL HOWARD NICHOLS SCHOOL**  
3401 RENEGADE AVE.  
BAKERSFIELD, CA. 93306

**BAKERSFIELD CITY SCHOOL DISTRICT**

**BUILDING 100 & 200 INTERIOR ELEVATIONS**

Version Date: 02-177  
Job no.: 8-26-03  
Date: 8-26-03  
Drawn by: DESA  
Chkd by: R. TROST  
©copyright 2002

Version: 9-11