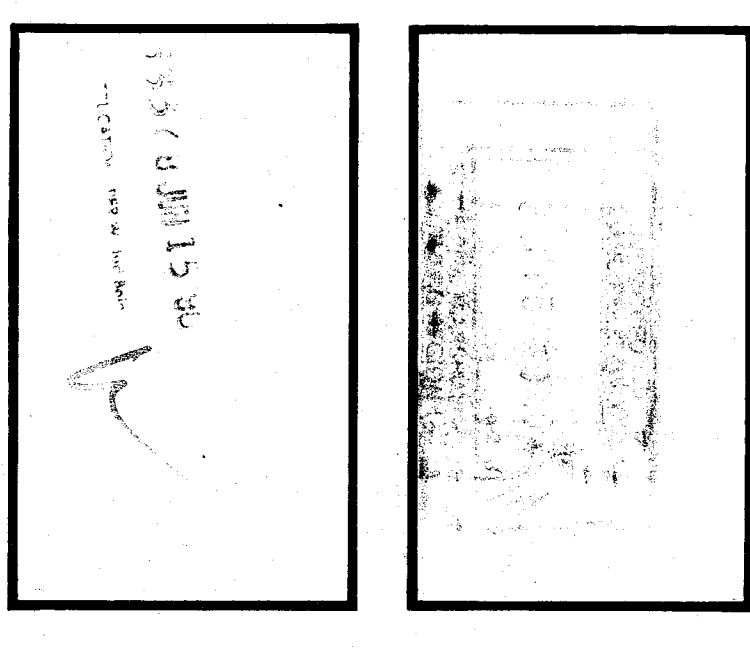


**ROBERT F. STUHR ARCHITECT INC.**  
 3121 CALIFORNIA AVE.  
 BAKERSFIELD CA  
 93304 (805) 327-1632

EX-2  
 ROBERT F. STUHR AIA C-1610  
 WILLIAM J. MELBY AIA C-16835  
 DANNY E. ORDOZ AIA C-14728

TITLE 24 & 1988 UBC

1/7/14



EXTERIOR ELEVATIONS - UNITS A, B, C, & D, NOTES  
**VISTA EAST CONTINUATION HIGH SCHOOL 30 YEAR MODERNIZATION**  
 815 EUREKA STREET  
 KERN HIGH SCHOOL DISTRICT  
 KERN COUNTY, CALIFORNIA

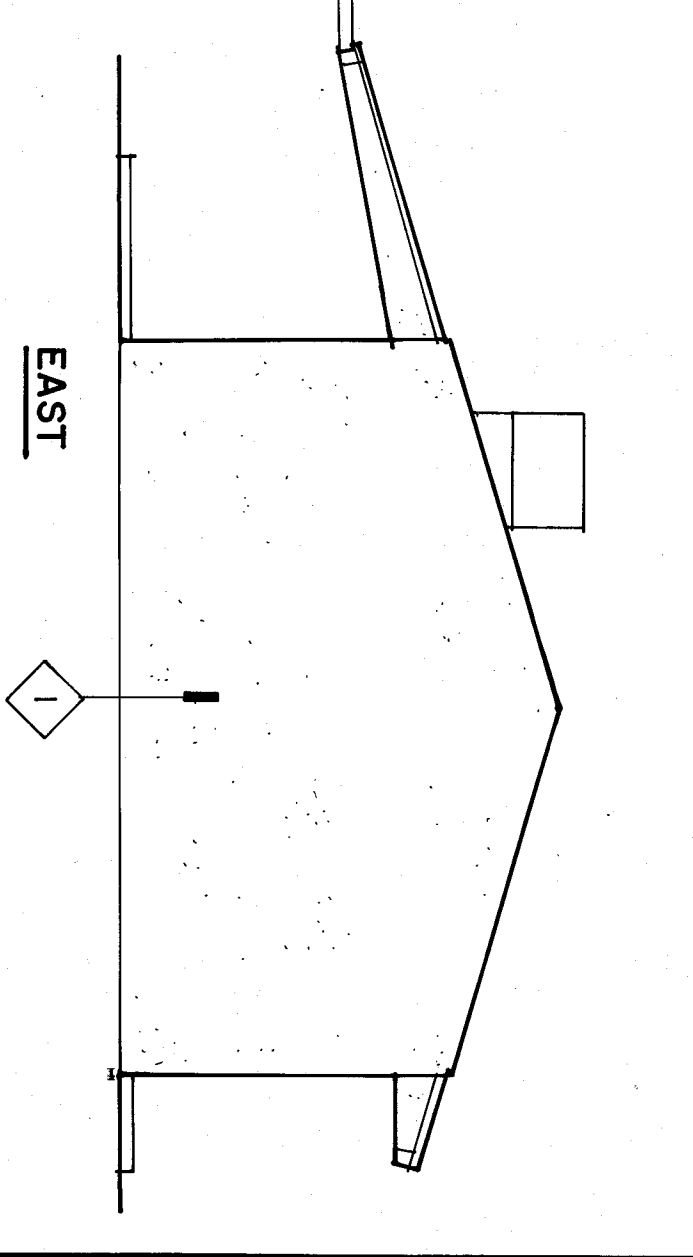
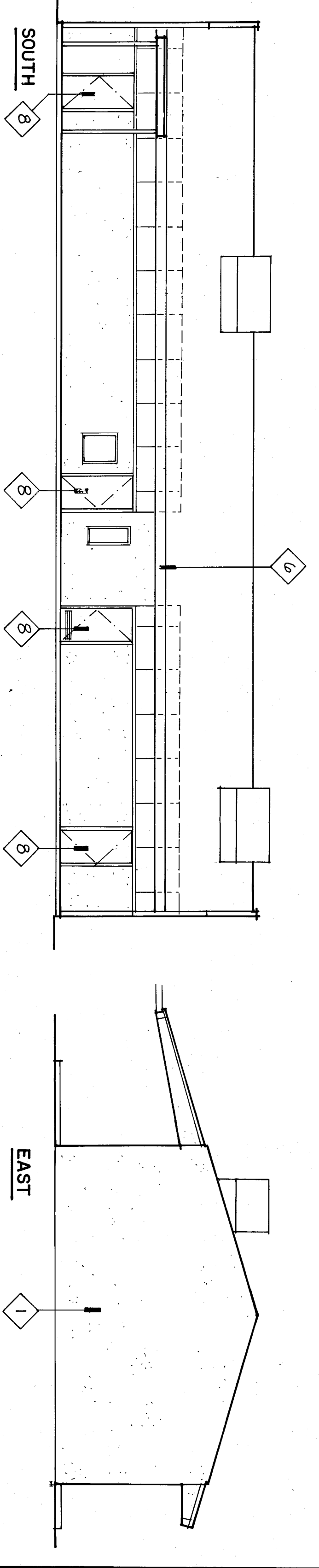
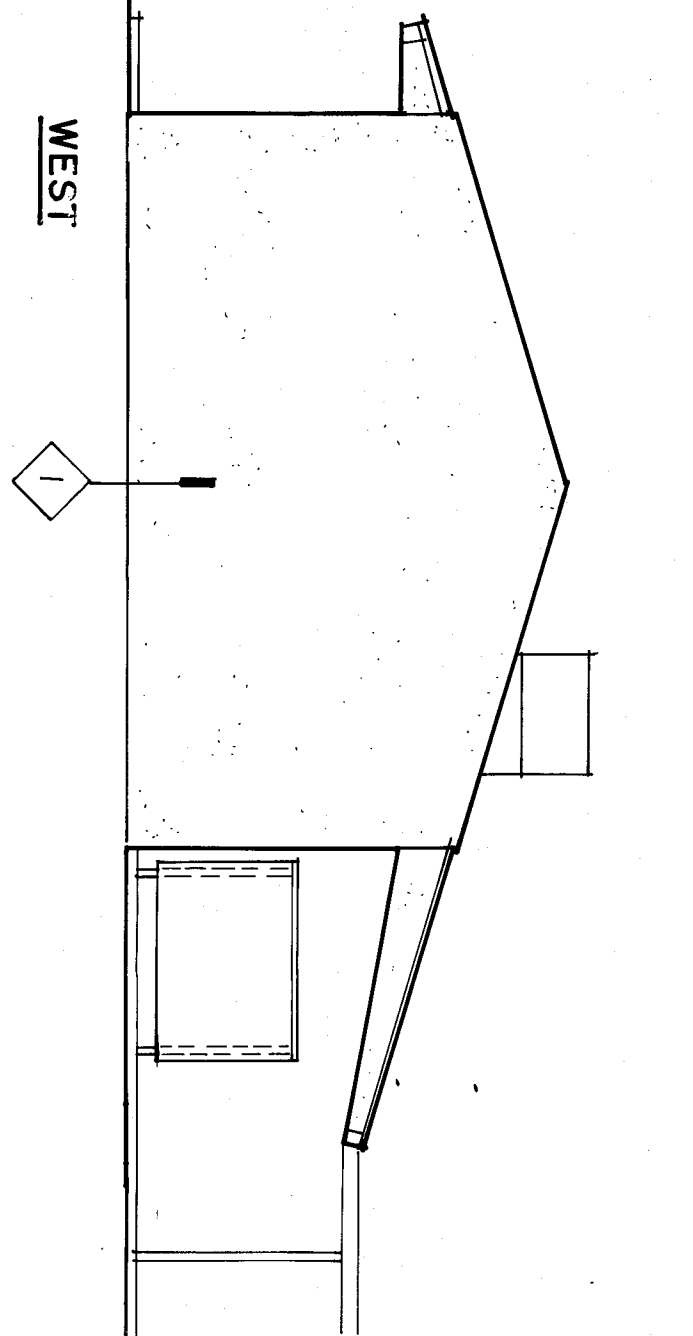
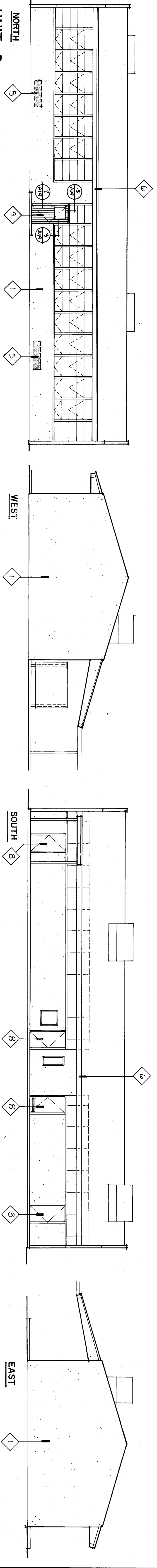
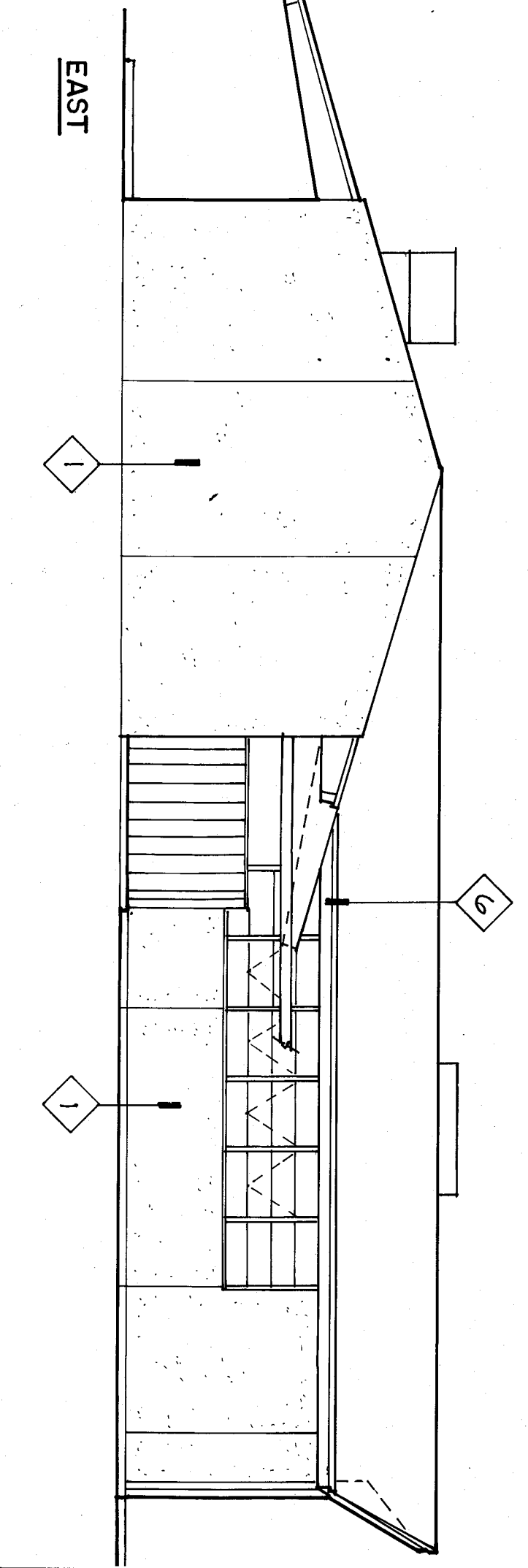
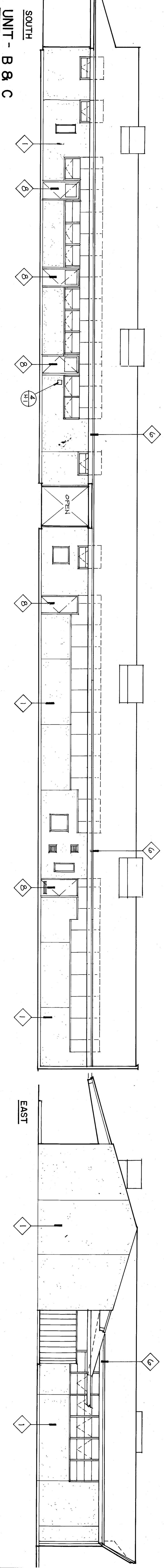
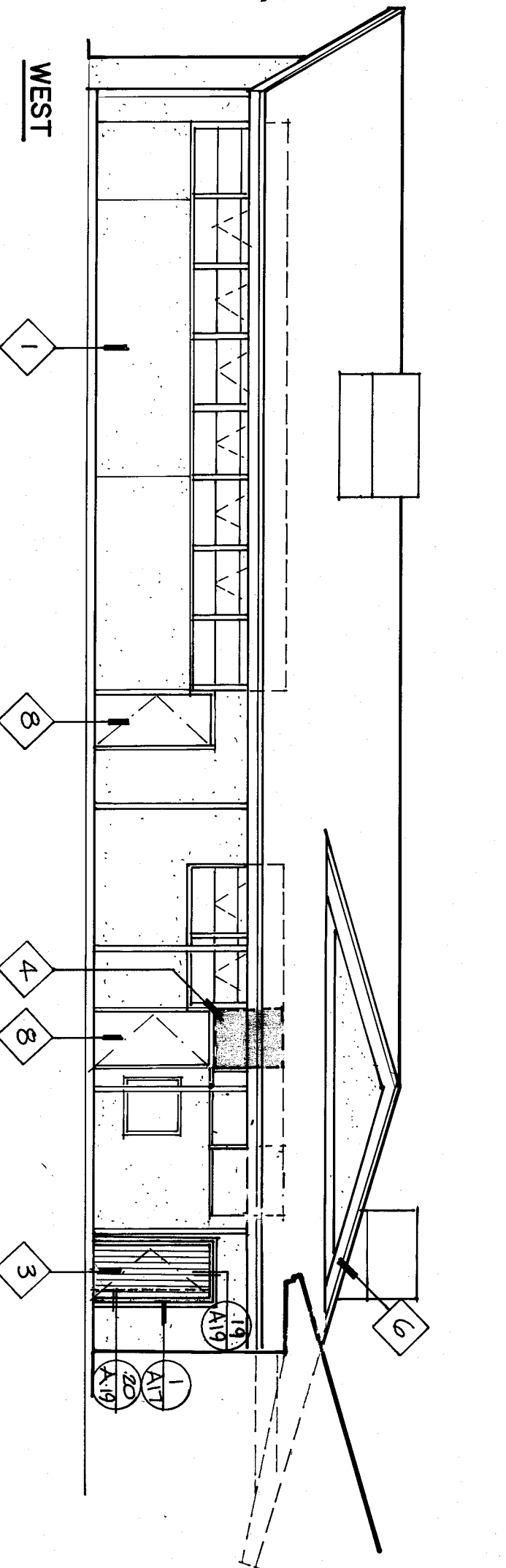
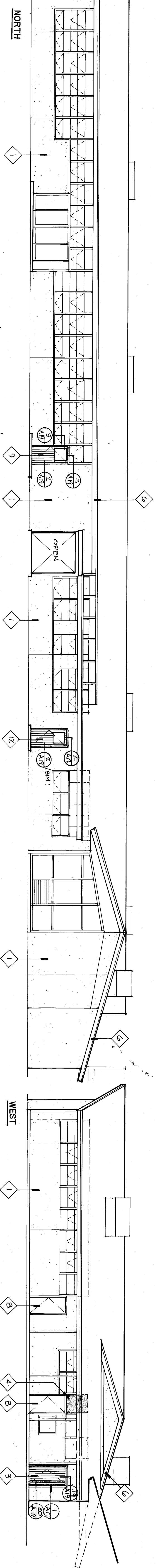
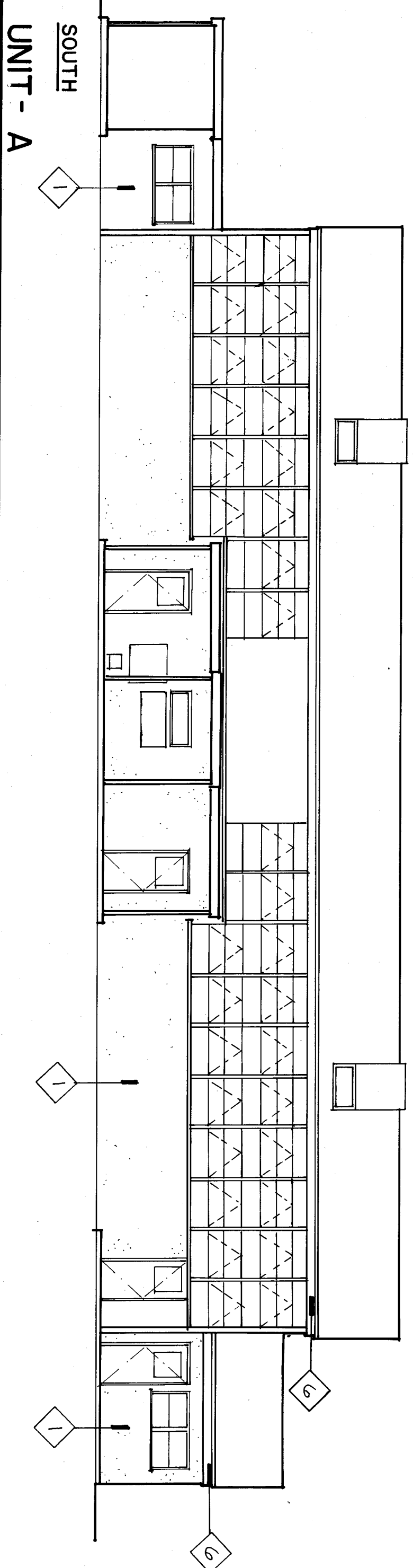
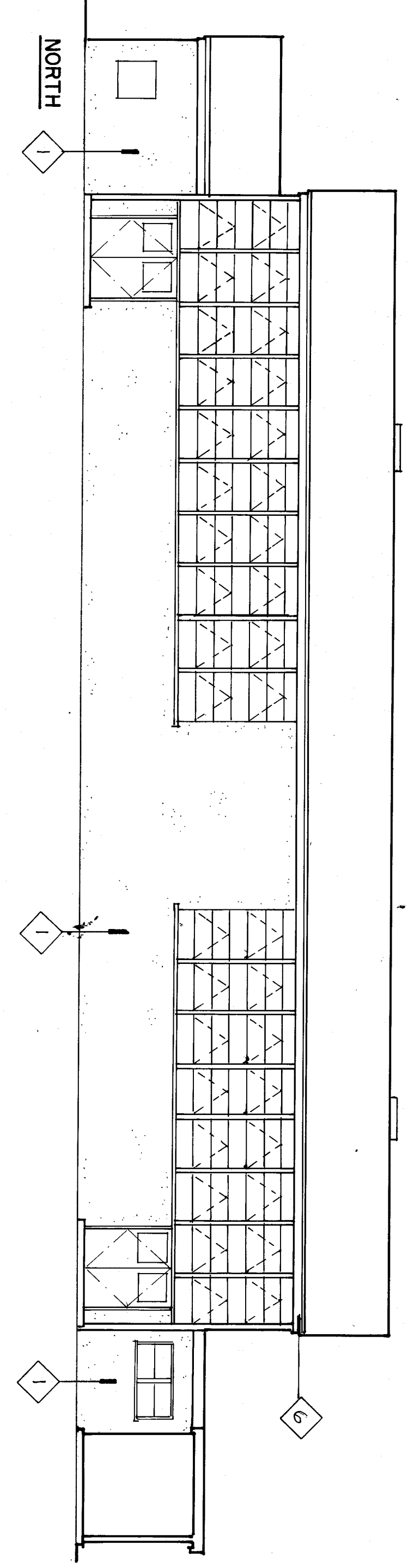
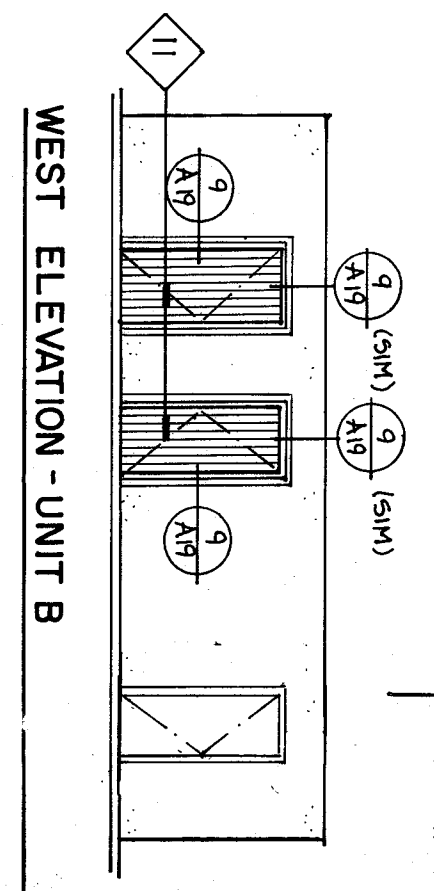
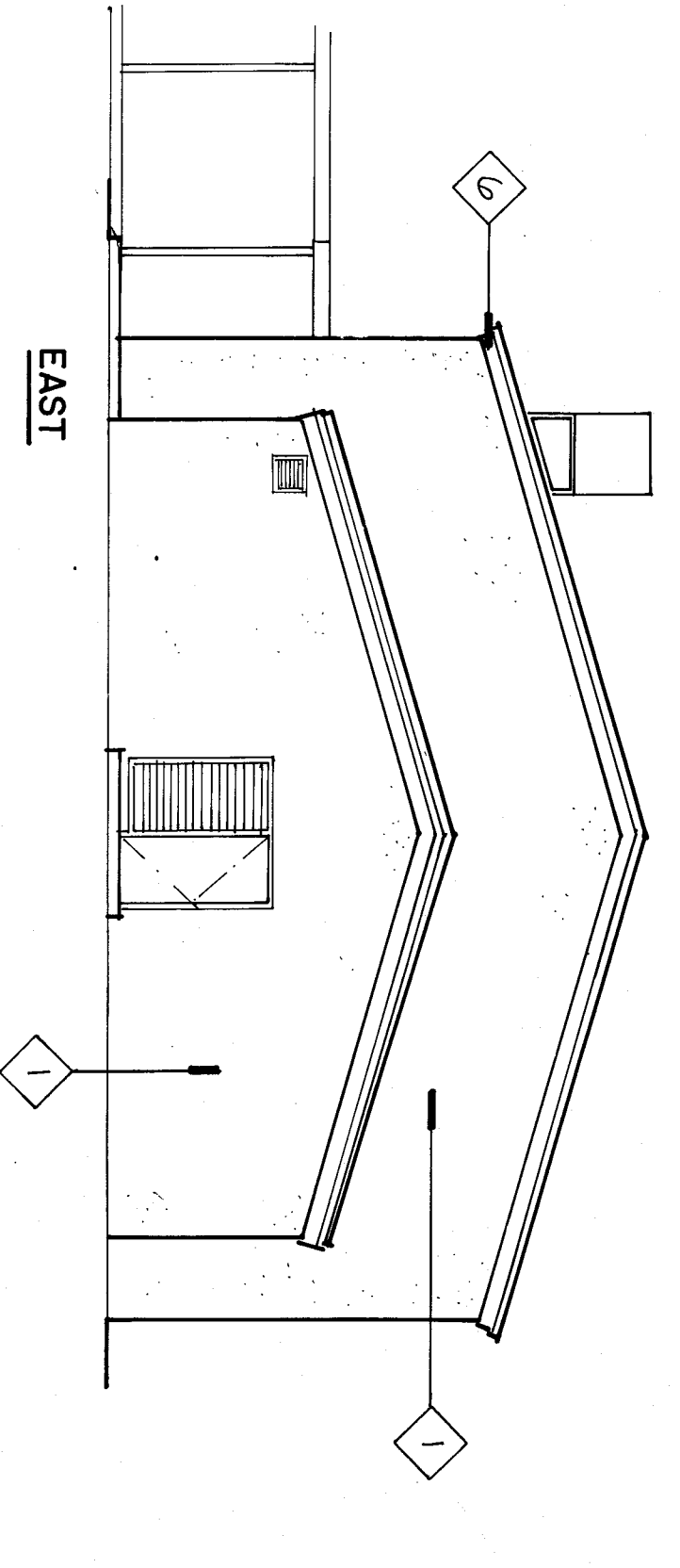
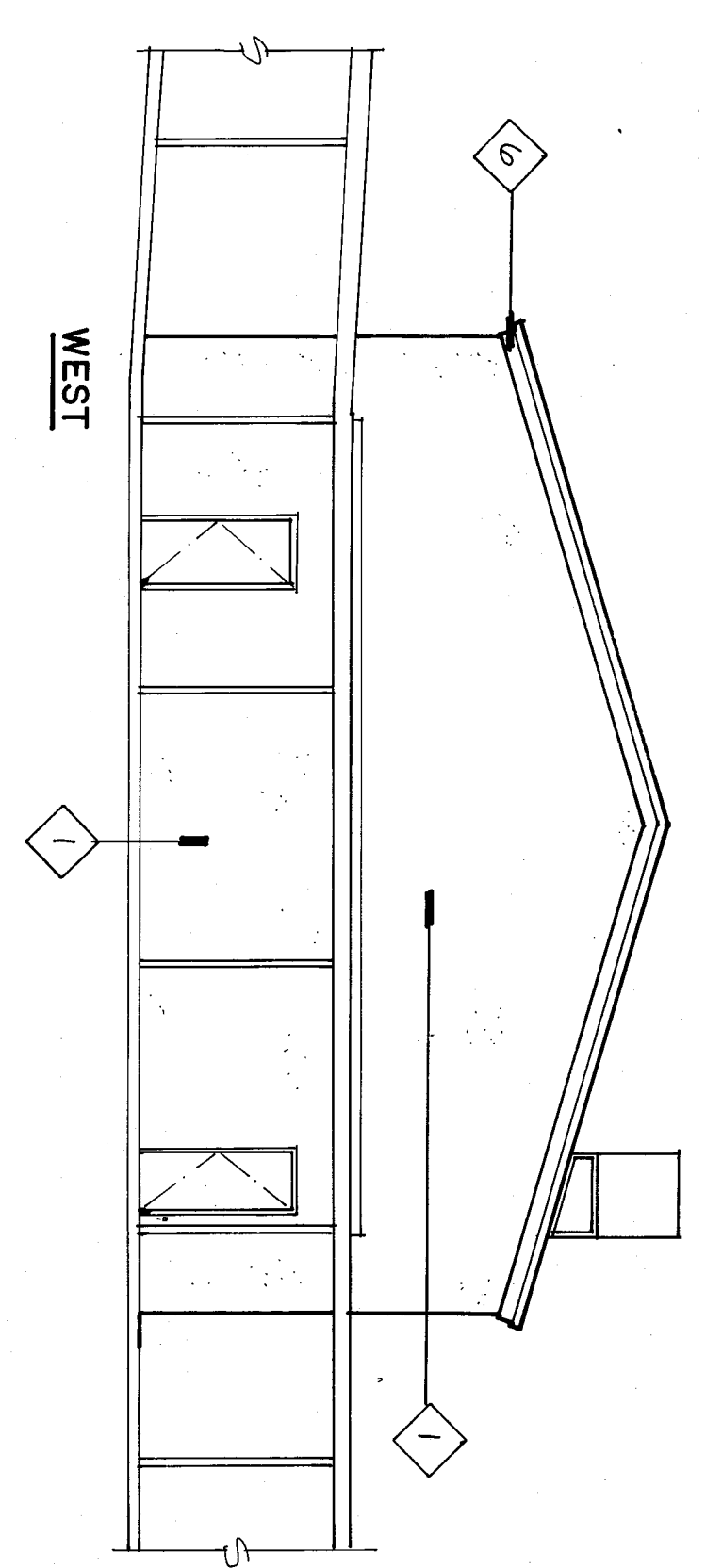
CHECK AND VERIFY ALL DIMENSIONS BEFORE PROCEEDING WITH THE WORK. REPORT DISCREPANCIES TO THE ARCHITECT IMMEDIATELY. SHALL CONFORM TO UBC.

MARK	DATE	REVISIONS

JOB NO: **707**  
 DRAWN: M.K.B.  
 CHECKED: M.K.B.  
 DATE: 5-14-95  
  
 OF 19 SHEETS

**EXTERIOR ELEV. NOTES**

1. Patch walls/doors as needed
2. match (E) Finish - paint.
3. Change (E) opening for door - paint.
4. Remove (E) wall in door/H.M. frame/H.C. HDWR.
5. REMOVE VENTS IN WALL FILL W/2" GAT 6" OC 4" HD TOE N. EA END. REPAIR ADJACENT WALL. CRIPPER.
6. Patch as require - paint.
7. (N) H.M. door/frame and hardware.
8. Replace (E) door hardware with H.C. hardware-PANT DOOR hardware.
9. Replace (E) door with new hardware.
10. Replace (E) door with (N) H.M. door/frame and H.C. hardware.
11. Repair (E) door/H.M. door/H.M. FRAME/(N) HDWR. 1" HR Reald.
12. Reverse door swing - (N) H.M. door/frame and H.C. hardware.
13. Plumbing cap lines as required.
14. (N) H.C. accessible.
15. (N) drinking fountain.
16. (N) wing walls @ drinking fountain. see dcl. 23-HJ. Patch.



**UNITS - A, B, C & D EXTERIOR ELEVATIONS**

NOTE: PAINT ALL EXTERIOR SURFACES INCLUDING, BUT NOT LIMITED TO, THE FOLLOWING: WALLS, SOFFITS, FACINGS, WINDOWS, DOORS, COLUMNS, ETC.

1/8/95