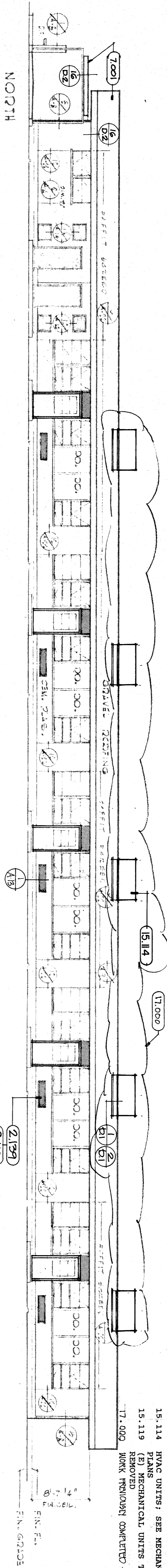
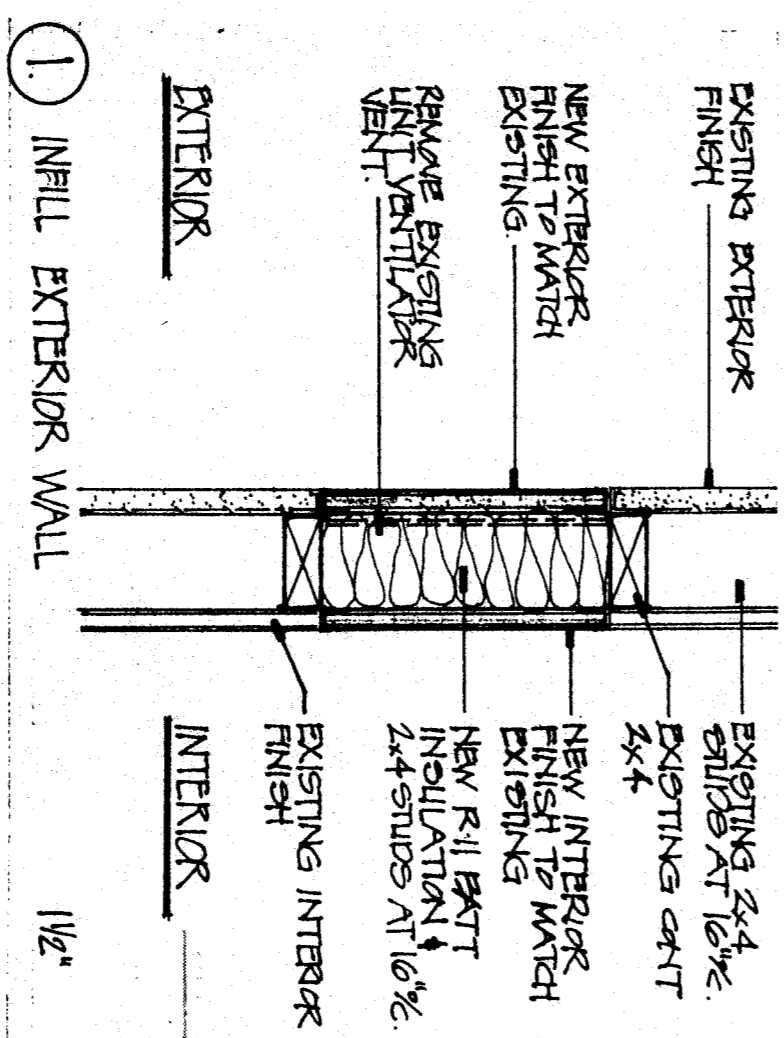
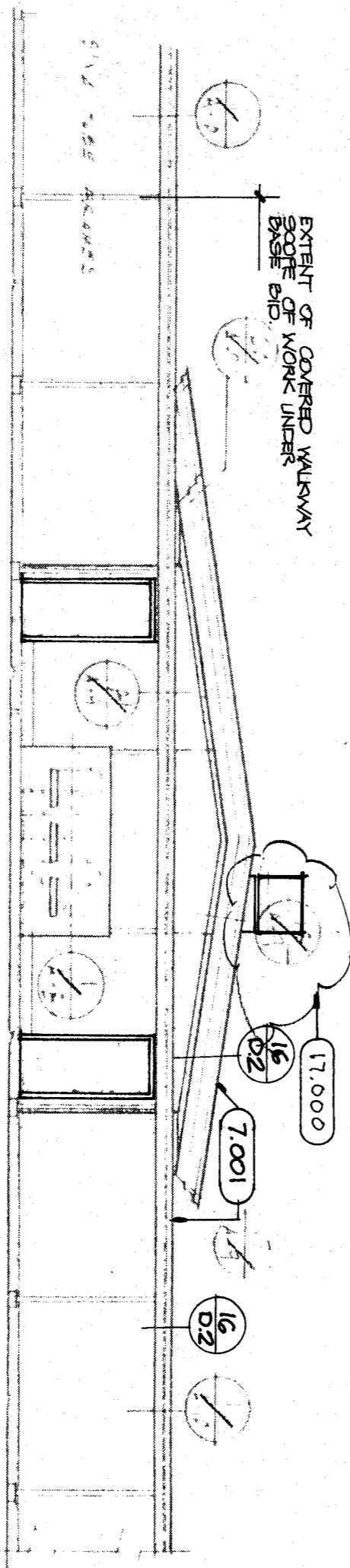
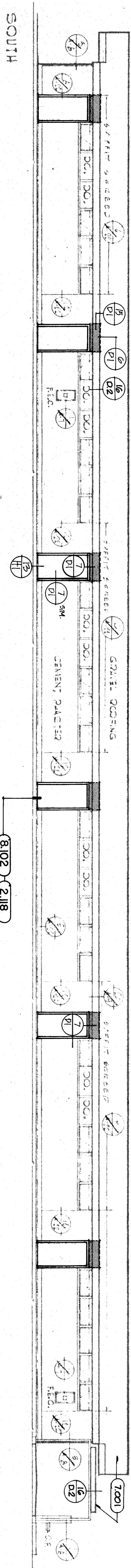


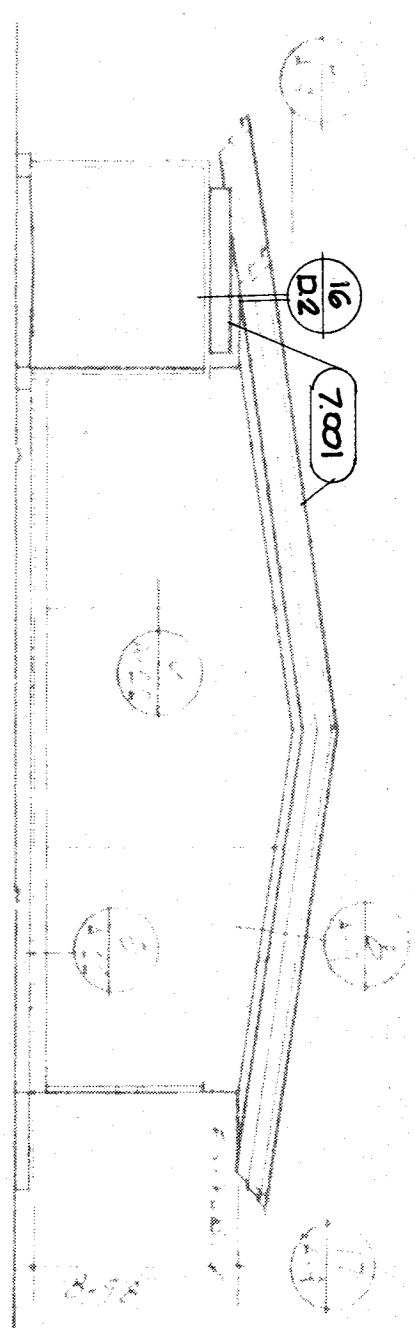
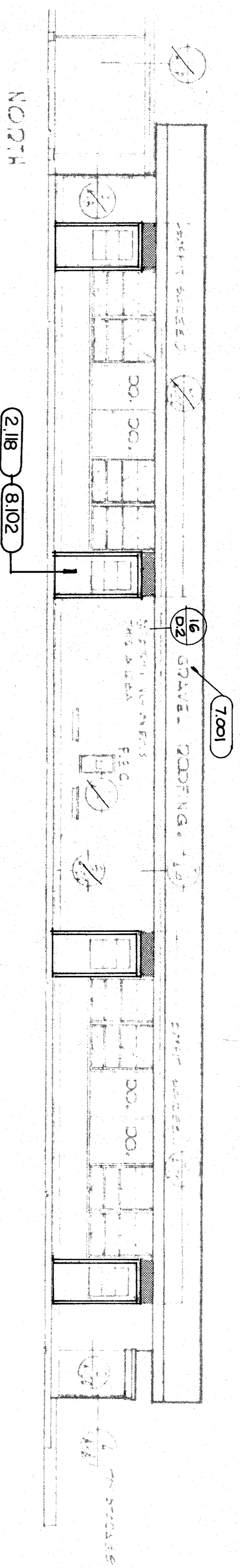
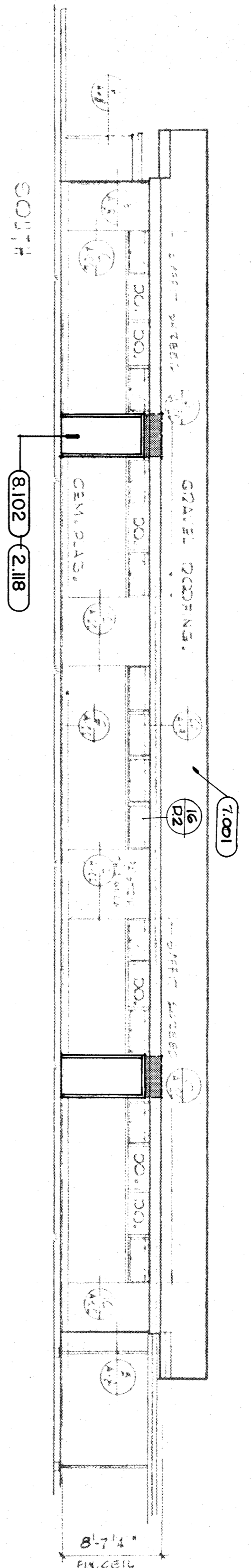
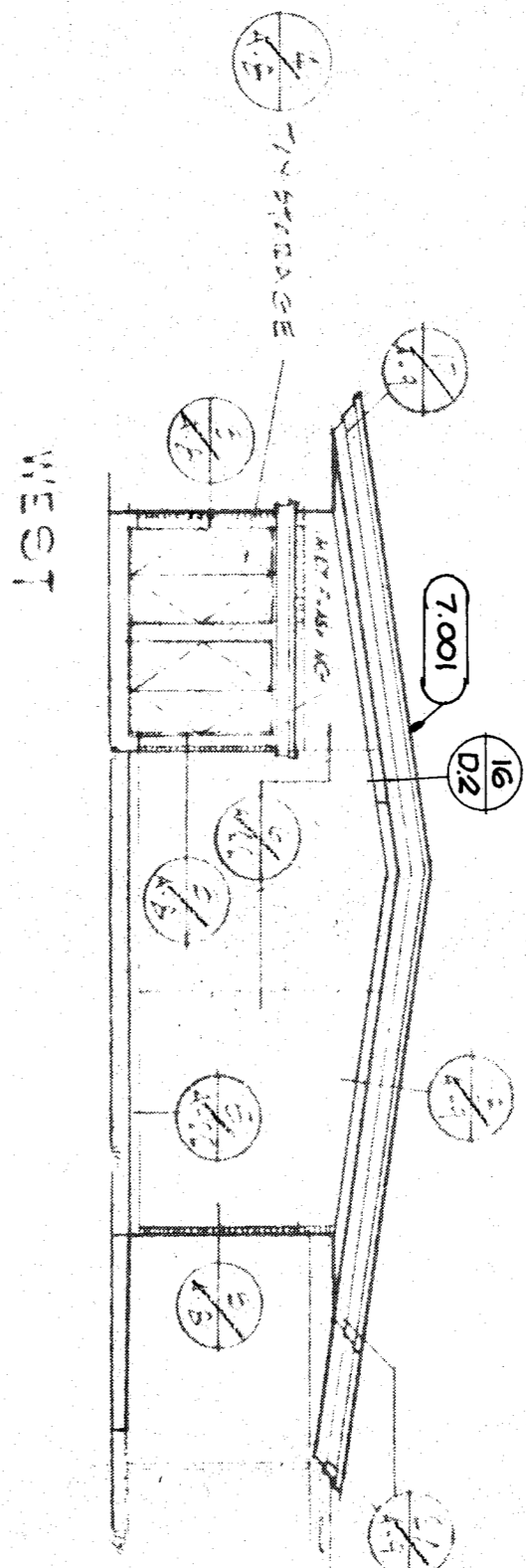
# Exterior Elevations

178

SOUTH  
UNIT "D"  
BLDG. "D"



BLDG. "C"



## KEYNOTES

- 2.118 REMOVE (E) DOOR & FRAME 02072
- 7.100 MILD ACIDED ROOFING 07640
- 8.102 METAL DOOR & FRAME 08111
- 9.108 PATCH & MATCH (S) CEMENT PLASTER 09220
- 15.114 HVAC UNITS; SEE MECHANICAL PLANS 15800
- 15.119 REMOVE MECHANICAL UNITS TO BE REMOVED. WORK REMAINS COMPLETED - N.C. 02072
- 17.000 FIN. FLOOR

Frank West Elementary School  
Modernization  
Bakersfield City School District

DATE	ISSUE FOR
DATE	REVISION

THESE DRAWINGS, RELATED SPECIFICATIONS, IDEAS, DESIGNS, AND ARRANGEMENTS REPRESENTED THEREBY ARE AND SHALL REMAIN THE PROPERTY OF THE ARCHITECT AND NO PART THEREOF SHALL BE COPIED, DISCLOSED TO OTHERS OR USED IN CONNECTION WITH ANY WORK OR PROJECT OTHER THAN THE SPECIFIC PROJECT FOR WHICH THEY HAVE BEEN PREPARED AND DEVELOPED WITHOUT THE WRITTEN CONSENT OF THE ARCHITECT. VISUAL CONTACT WITH THESE DRAWINGS OR SPECIFICATIONS SHALL CONSTITUTE CONCLUSIVE EVIDENCE OF ACCEPTANCE OF THESE RESTRICTIONS.

WRITTEN DIMENSIONS ON THESE DRAWINGS SHALL HAVE PRECEDENCE OVER SCALED DIMENSIONS; CONTRACTORS SHALL VERIFY AND BE RESPONSIBLE FOR ALL DIMENSIONS AND CONDITIONS ON THE JOB AND THIS OFFICE MUST BE NOTIFIED OF ANY VARIATIONS FROM THE DIMENSIONS AND CONDITIONS SHOWN BY THESE DRAWINGS.

DETAILED SHOP DRAWINGS MUST BE SUBMITTED TO THIS OFFICE FOR REVIEW BEFORE PROCEEDING WITH THE FABRICATION OF ANY PRODUCT TO BE INCLUDED IN THIS PROJECT.

**pechin associates aia**  
1400 easton drive suite 138  
bakersfield, ca 93309 (805)322-2021

C-8366

Arthur B. Pechin

SHEET

**13**

Project Number: 408-0488

8.24.15