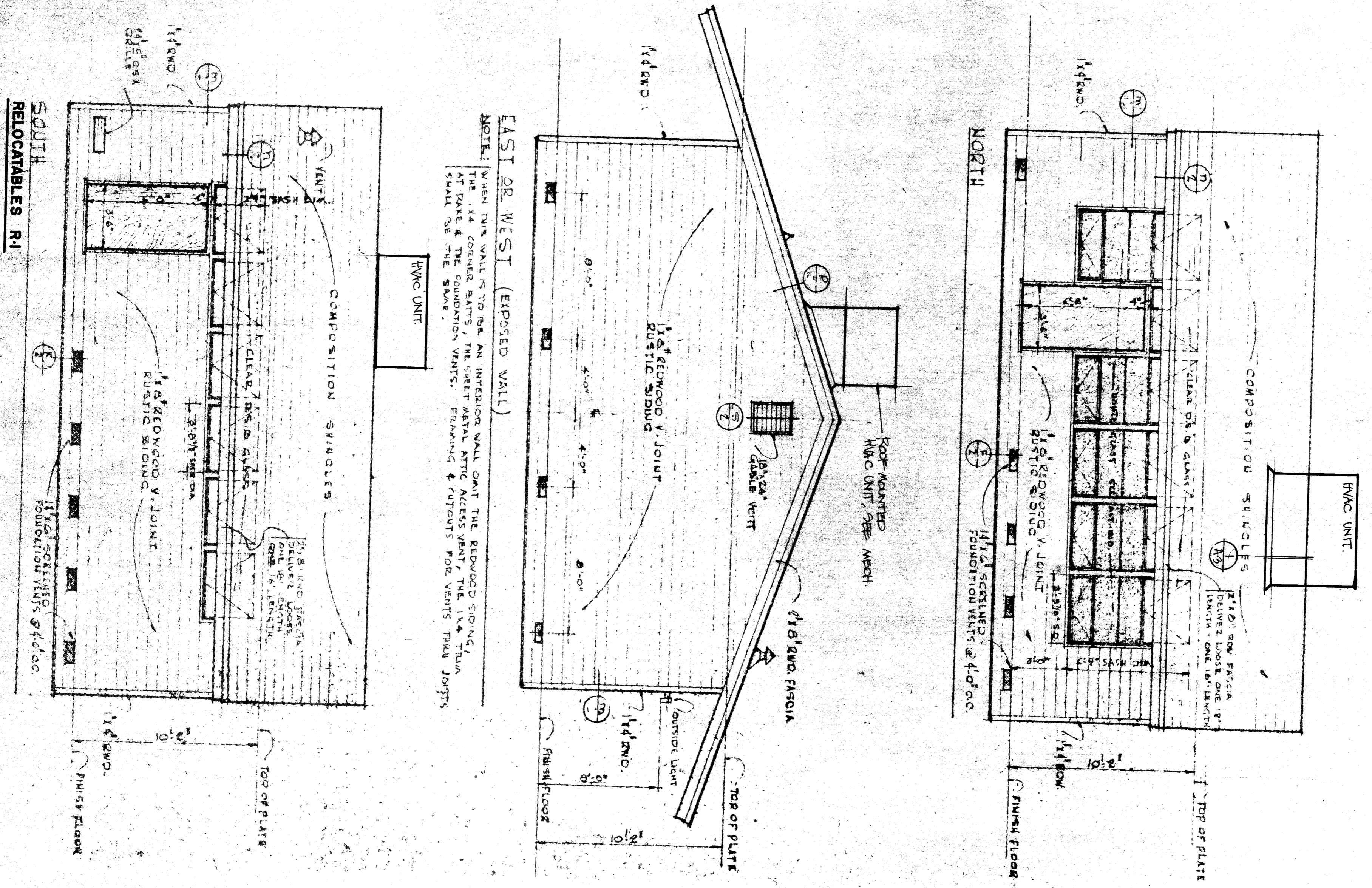
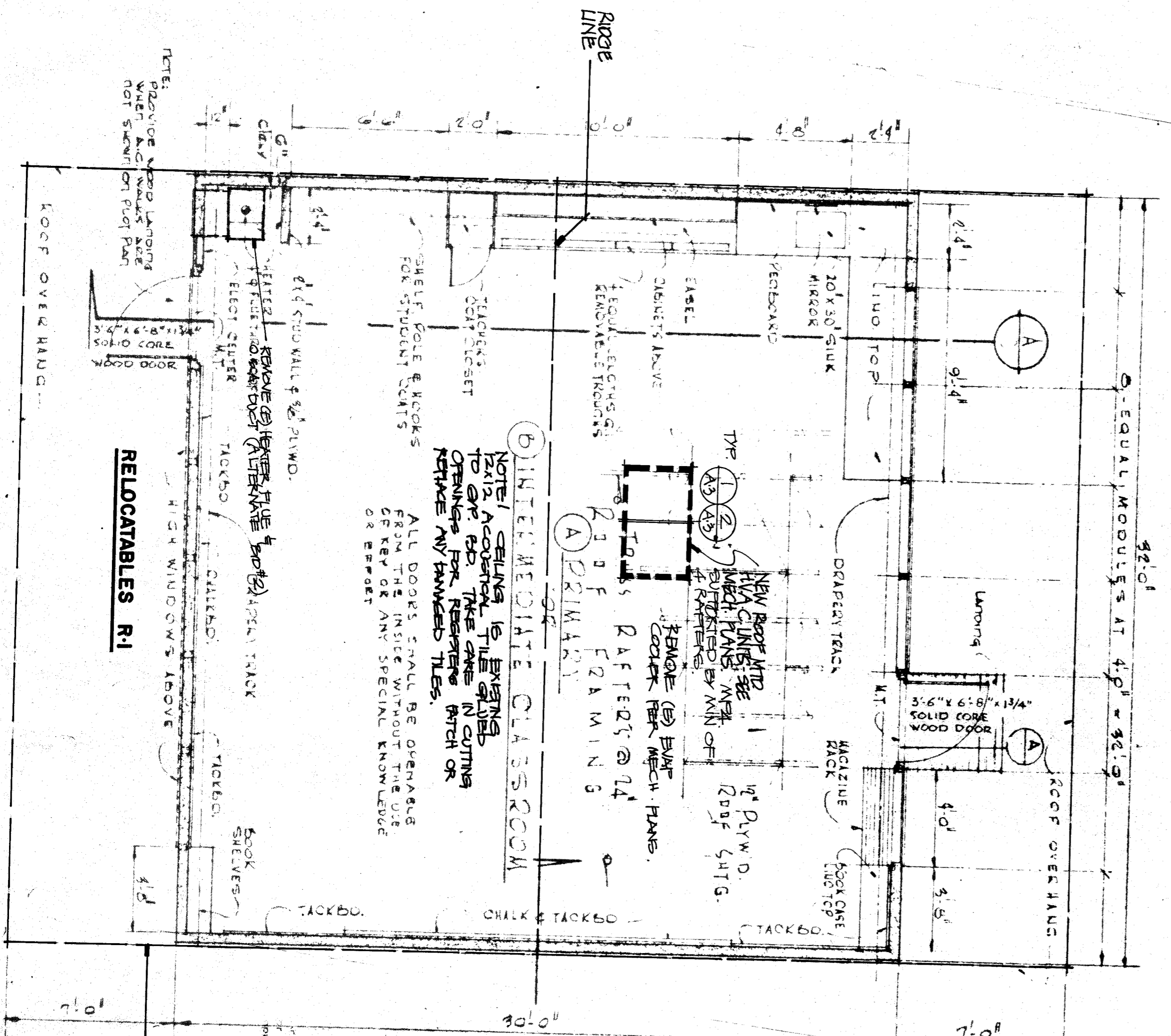


EXTERIOR ELEVATIONS 1/4"

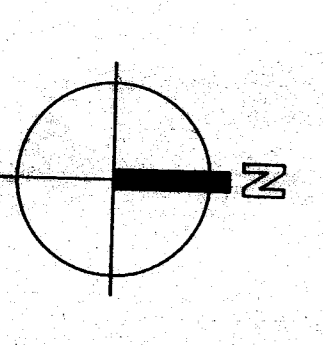


EAST OR WEST (EXPOSED WALL)
 NOTE: WHEN THIS WALL IS TO BE AN INTERIOR WALL OMT THE REDWOOD SIDING, AT PAKE & THE FOUNDATION VENTS, THE 1 X 4 TRIM SHALL BE THE SAME.
 FINISH FLOOR
 TOP OF PLATE
 1 1/2\"/>

FLOOR PLAN 1/4"



INTERMEDIATE CLASSROOM
 NOTE: CHANGES IS BEING MADE TO THIS ROOM TO ACCOMMODATE THE HVAC UNIT. THE UNIT WILL BE PLACED IN THE CENTER OF THE ROOM. THE UNIT WILL BE 4'-0\"/>



pechin associates aia 1400 easton drive bakersfield, ca 93309 suite 138 (805)322-2021	Frank West Elementary School HVAC Bakersfield City School District		DATE _____ ISSUE FOR _____
	SHEET 26	PROJECT NUMBER: 449-0391	DATE _____ REVISION _____