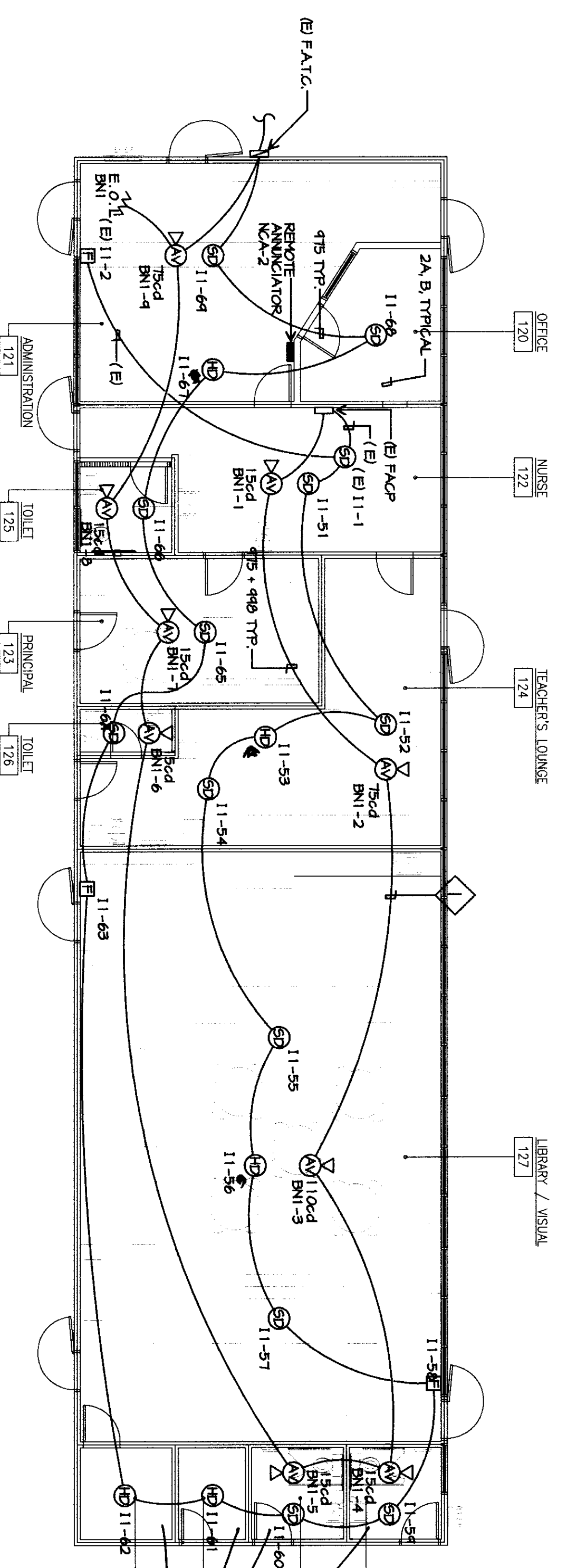


- FIRE ALARM DEMOLITION PLAN NOTES**
- 1 REMOVE TESTING ROOM, REMOVE OLD FIRE ALARM PANEL, AFTER ENTIRE NEW FIRE ALARM SYSTEM HAS BEEN REPLACED AND DESCRIBED.

BUILDING B FIRE ALARM DEMOLITION PLAN

SCALE: 1/8"=1'-0"

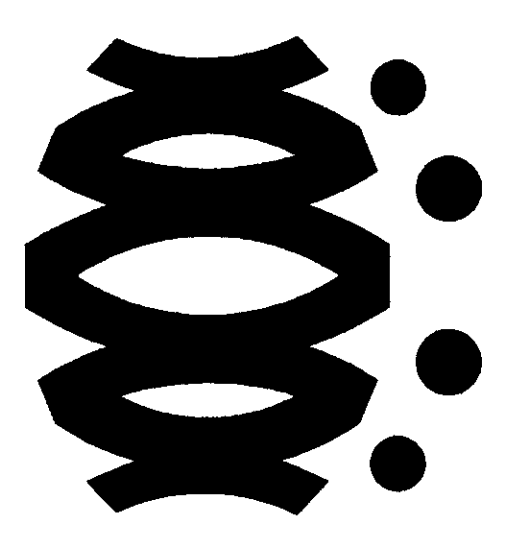


- FIRE ALARM PLAN NOTES**
- 1 SUPPORT FIRE ALARM CABLES EVERY 5' W/ RBD J-HOOKS AT LEAST 8" ABOVE CEILING. TYPICAL FIRE ALARM CABLES AND THEIR SUPPORTS SHALL BE IDENTIFIED FROM COMMUNICATION CABLE SUPPORT, TYPICAL.

1100 LD  
NO ATIC

BUILDING B FIRE ALARM PLAN

SCALE: 1/8"=1'-0"

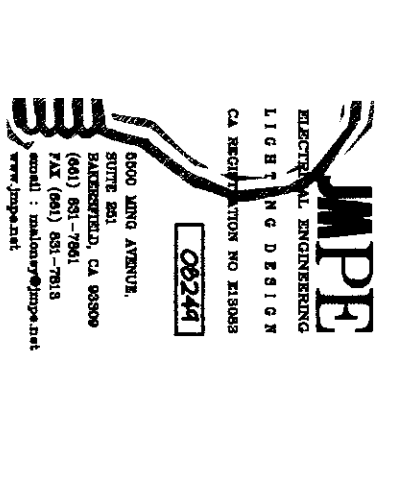
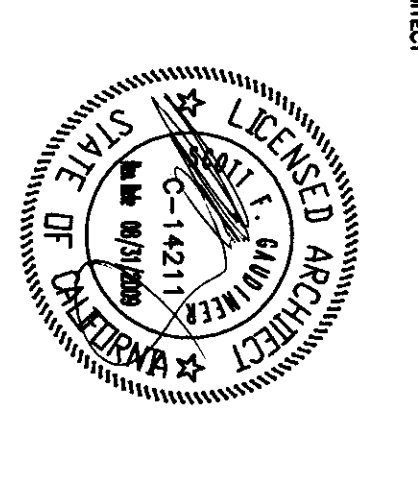


**FLEWELLING & MOODY**  
architects education

**HEADQUARTERS OFFICE:**  
41 South Lake Avenue, Suite 100  
Brea, CA 92623  
TEL: 714.851.1111  
FAX: 714.851.1117  
EMAIL: info@flewellingandmoody.com

**ANTELOPE VALLEY OFFICE:**  
505 West Locust Street  
Antelope Valley, CA 95721  
TEL: 916.837.1111  
FAX: 916.837.1117  
EMAIL: antelope@flewellingandmoody.com

An Employee Owned Corporation



DESIGNATION NAME  
DIPLOMA IN ARCHITECTURE  
ARCHITECT  
APPROVED 11.28.17  
AC 11.28.17  
DATE 11.28.17

Drawn by	AC	
Checked by	PH	
Revision		
No.	Date	Description

**MODERNIZATION PROJECT AT  
EVERGREEN ELEMENTARY SCHOOL**  
2600 ROSE WARE DRIVE  
BAKERSFIELD, CA 93304

**BAKERSFIELD CITY SCHOOL DISTRICT**  
  
**BUILDING B FIRE ALARM  
DEMOLITION PLAN  
BUILDING B FIRE ALARM  
PLAN**

Job No. **1894200**  
Date: 1-14-2009  
**E-4.3**