

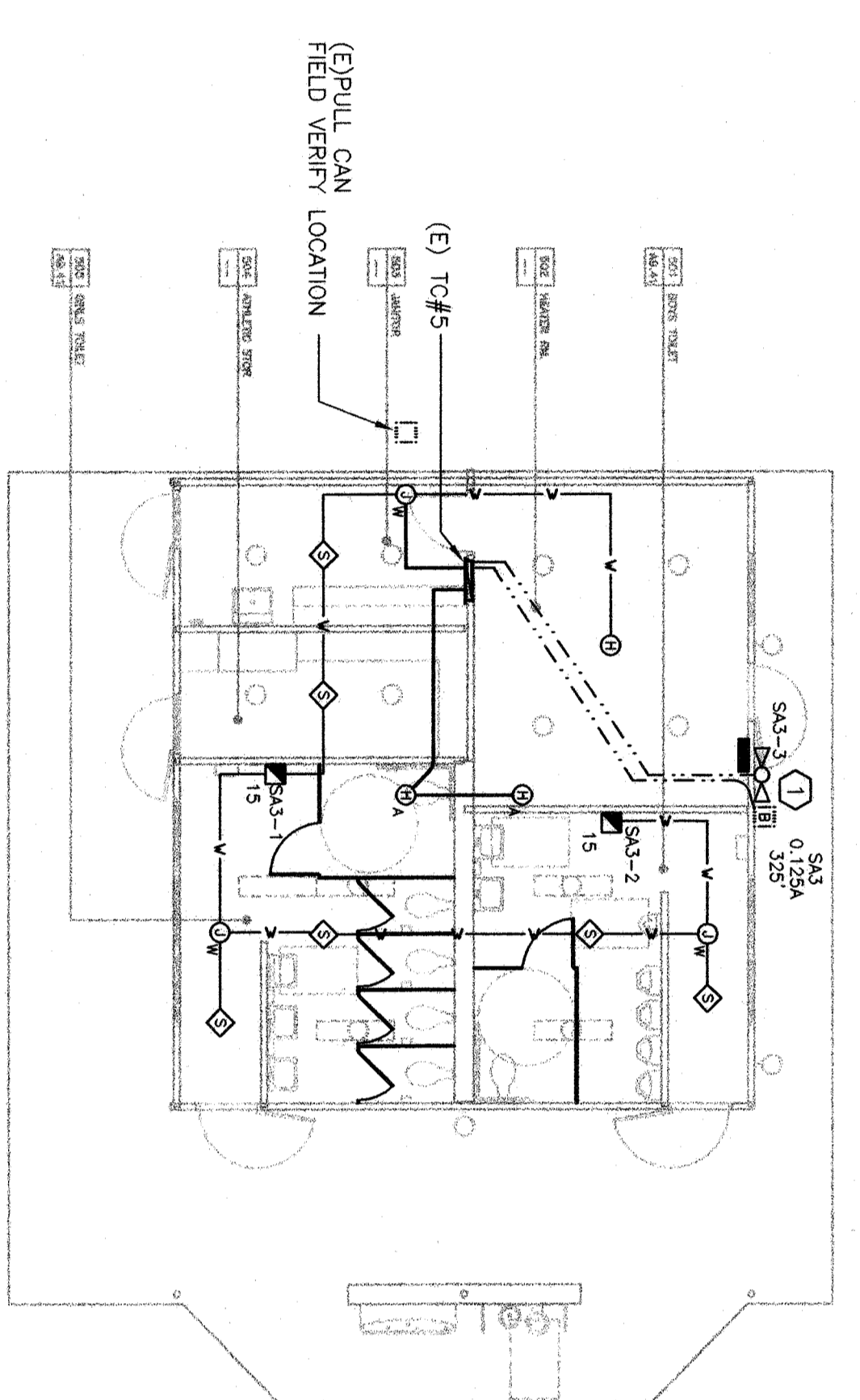


INTERSTATE ENGINEERING
444 Y Foch Road, Suite 106
Bakersfield, CA 93311
(661) 832-4400 / (661) 432-4494 fax
ESTABLISHED 1988
James W. Graham, Electrical Engineer
E.E. #5101

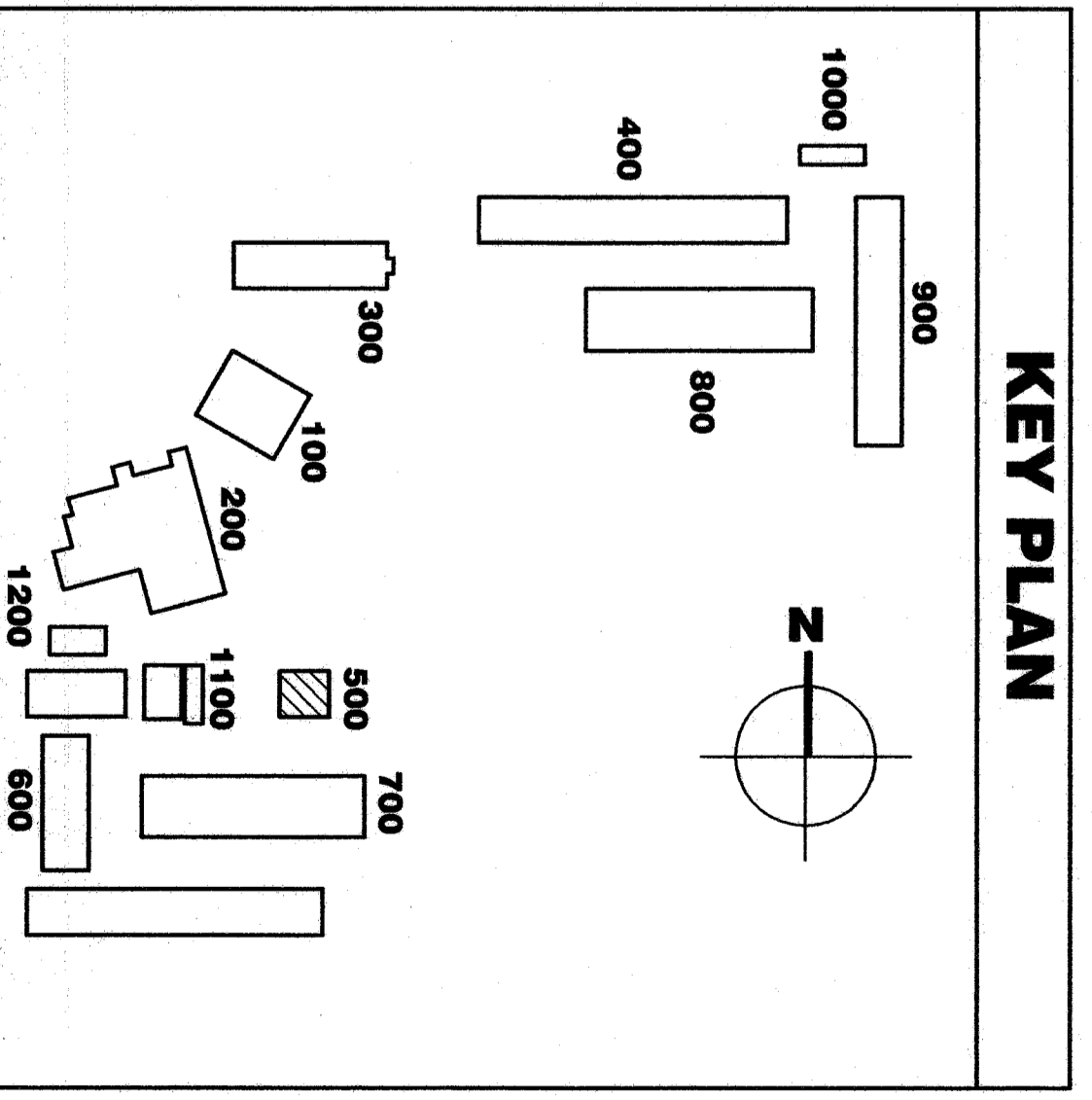
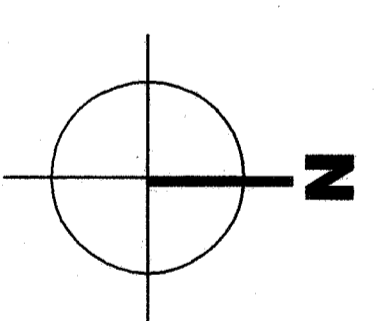
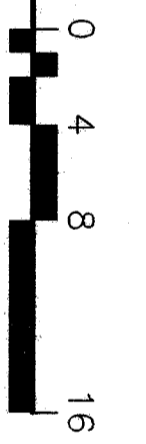
KEYNOTES

Ⓢ REPLACE EXISTING EXTERIOR FIRE ALARM HORN WITH NEW WP EXTERIOR FIRE ALARM HORN. SEE FIRE ALARM SINGLE LINE RISER DIAGRAM.

**FULLY AUTOMATIC SYSTEM
FIRE ALARM COMPLETE
PLAN SUBMITTAL**



FIRE ALARM FLOOR PLAN BLDG. 500



**MODERNIZATION
FOR**
HENRY ESSLER SCHOOL
2901 ESSLER STREET
BAKERSFIELD, CA 93306
BAKERSFIELD CITY
SCHOOL DISTRICT

**BUILDING 500
FIRE ALARM
FLOOR PLAN**

| | | | |
|---------------|----------|---------------|--------|
| Version Date: | 02-126 | Version Time: | |
| job no. | 06/24/03 | drawn by | T.Y.A. |
| date | | chk'd by | D.P.G. |
| ©copyright | 2003 | | |

