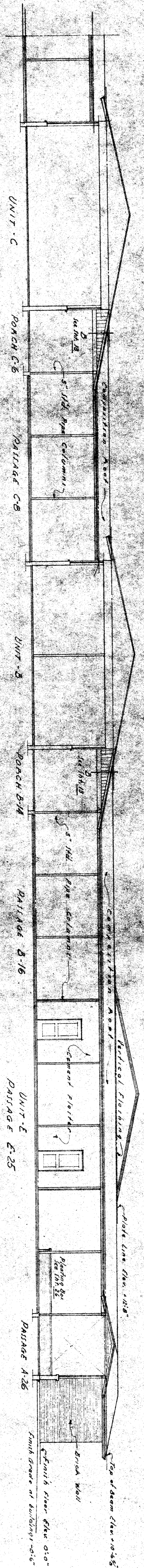
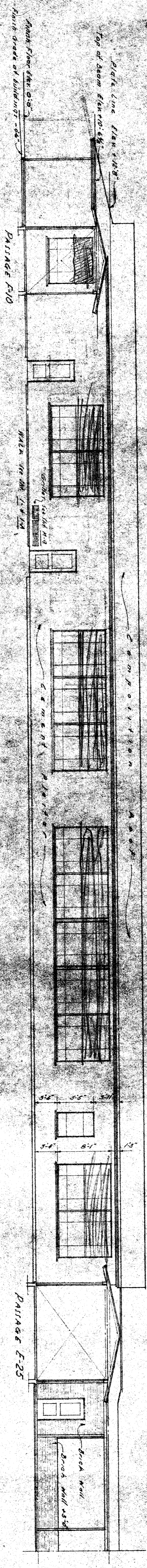


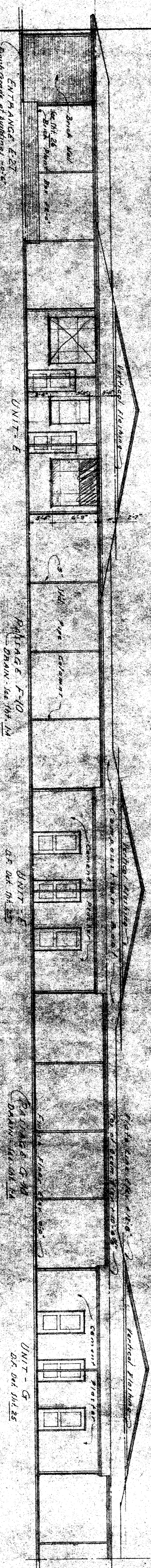
E.1 NORTH ELEVATION  
1/8" = 1'-0"



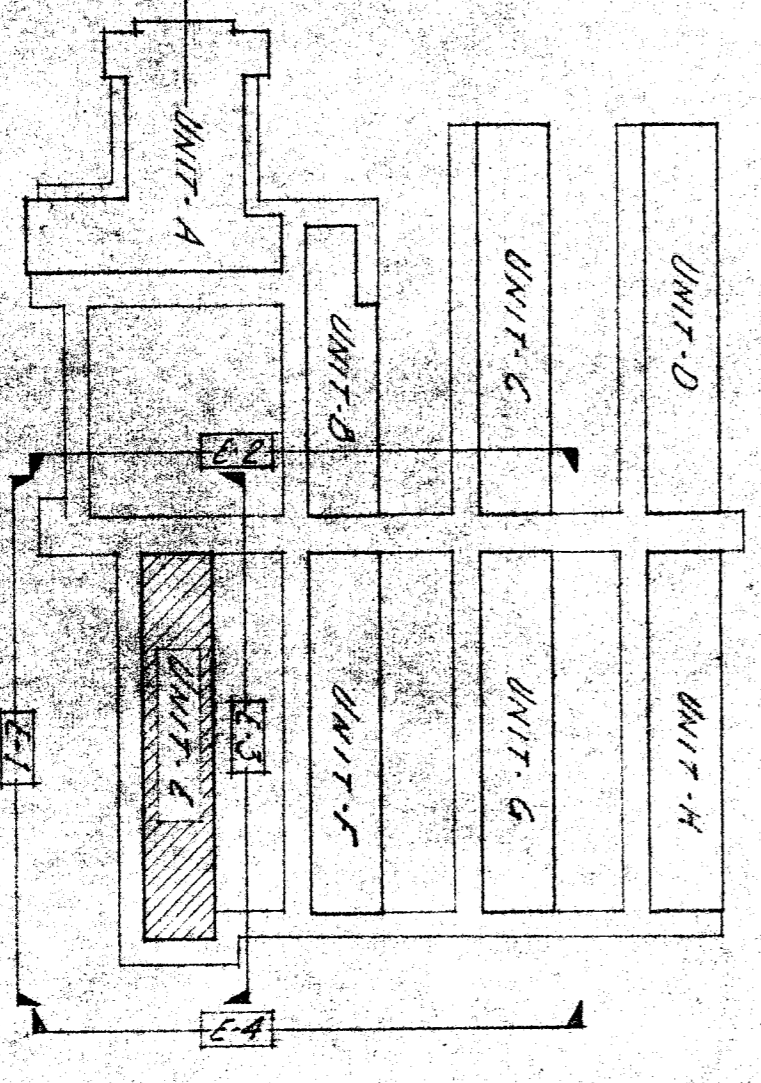
E.2 SECTION  
1/8" = 1'-0"



E.3 SOUTH ELEVATION  
1/8" = 1'-0"



E.4 WEST ELEVATION  
1/8" = 1'-0"



KEY PLAN FOR ELEVATIONS

STATE OF CALIFORNIA  
DEPARTMENT OF PUBLIC WORKS  
DIVISION OF ARCHITECTURE

BERKELEY CITY SCHOOL DISTRICT  
BERKELEY AND JONATHAN STREET SCHOOL  
APPROVED  
A. R. C. H. I. T. E. C.  
2-7-48

DATE 7-7-49  
DRAWN D. W. H. W. C.  
WRIGHT METCALF & PARSONS  
111 NORTON BUILDING  
SAN FRANCISCO, CALIFORNIA

UNIT E  
UNIT D  
UNIT C  
UNIT B  
UNIT A