

SOUTH KING STREET

OWENS STREET

POTOMAC AVENUE

ATLANTIC AVENUE

GRADING PLAN

POTOMAC & SOUTH KING STREET SCHOOL

Scale 1"=40'

Elevation Finish Floor 405.5

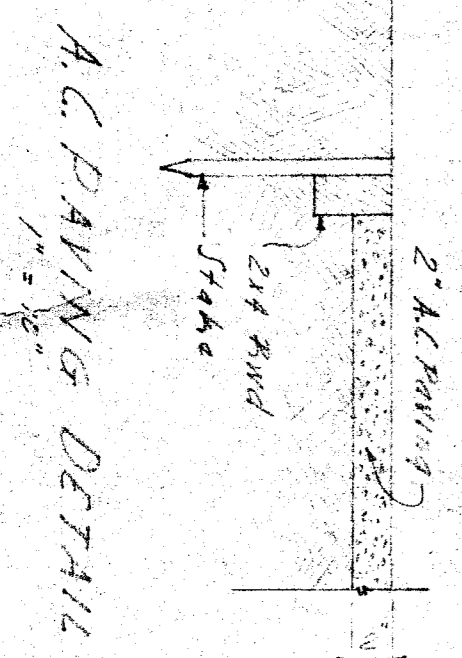
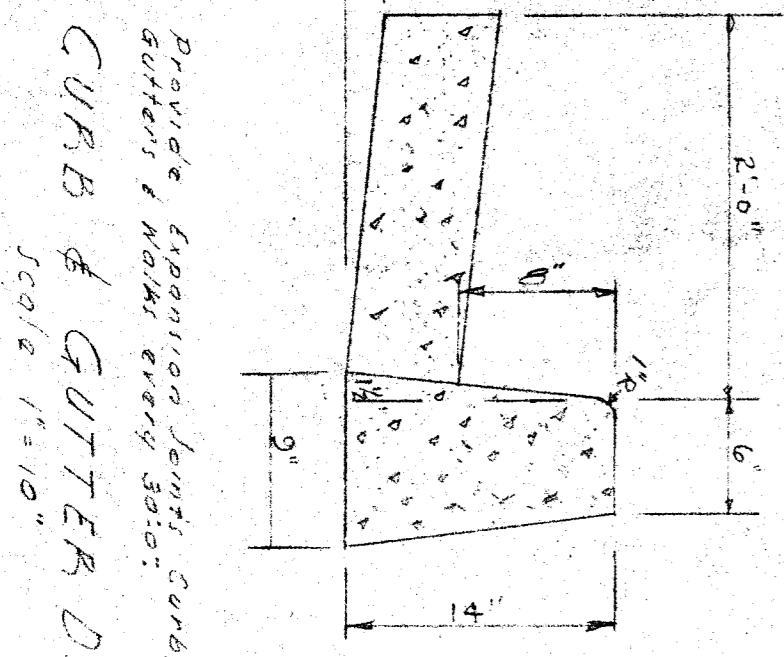
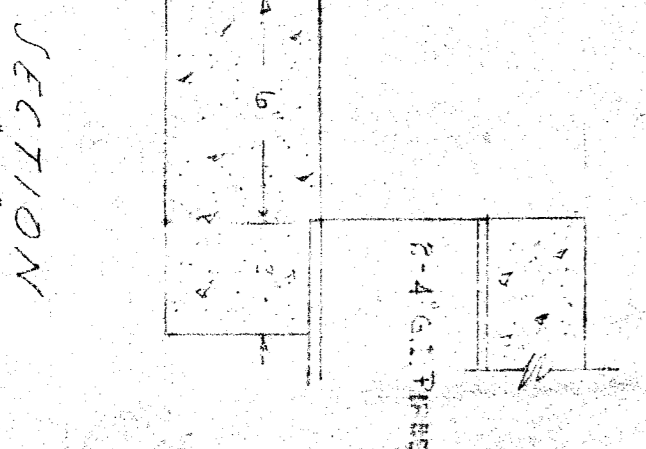
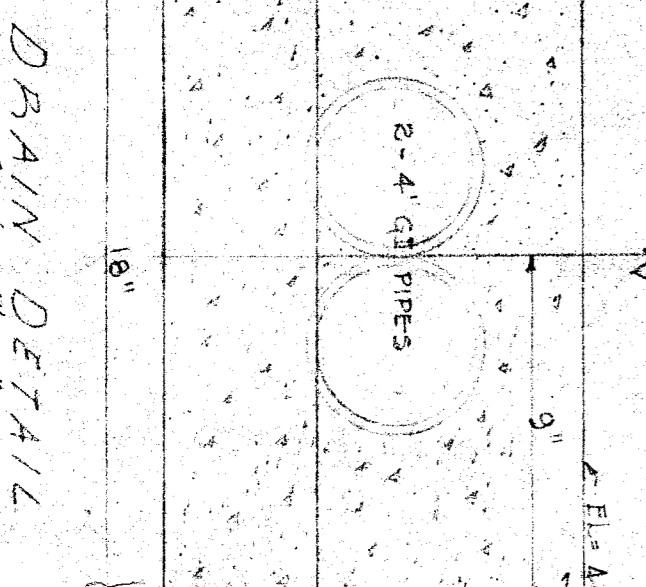
LEGEND

N.G. Natural Grades Shown

E.G. Existing Grades Shown

F.G. Finish Grades Shown

NOTE: Elevation Finish Floor 405.5 is equal to 0.0 on Architectural and Structural Drawings.



STATE OF CALIFORNIA
DEPARTMENT OF PUBLIC WORKS
DIVISION OF ARCHITECTURE

SAN FRANCISCO CITY ENGINEER
BOARD OF EDUCATION
APPROVED

GRADING PLAN
POTOMAC & SOUTH KING STREET SCHOOL
SAN FRANCISCO CITY ENGINEER
BOARD OF EDUCATION
APPROVED

DATE: 11-1-54
DRAWN BY: R. T. JONES
CHECKED BY: J. H. HARRIS
SCALE: 1"=40'