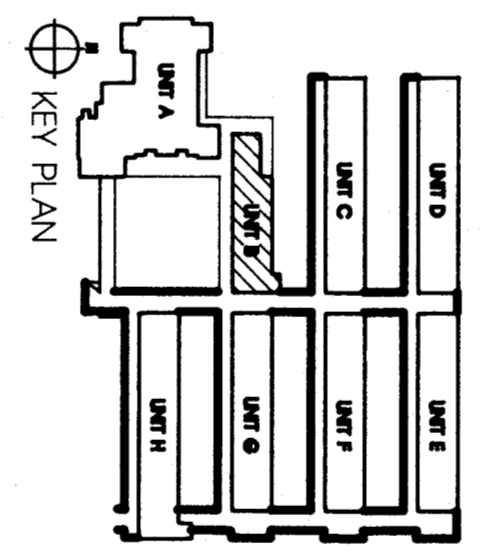
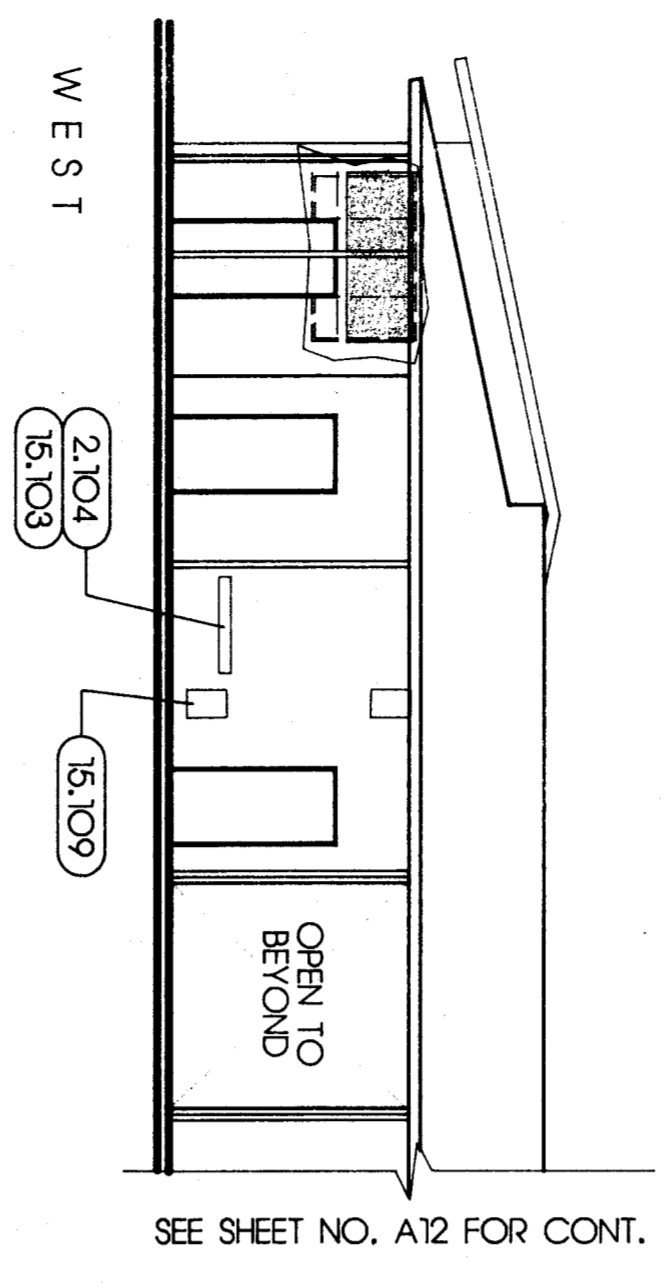
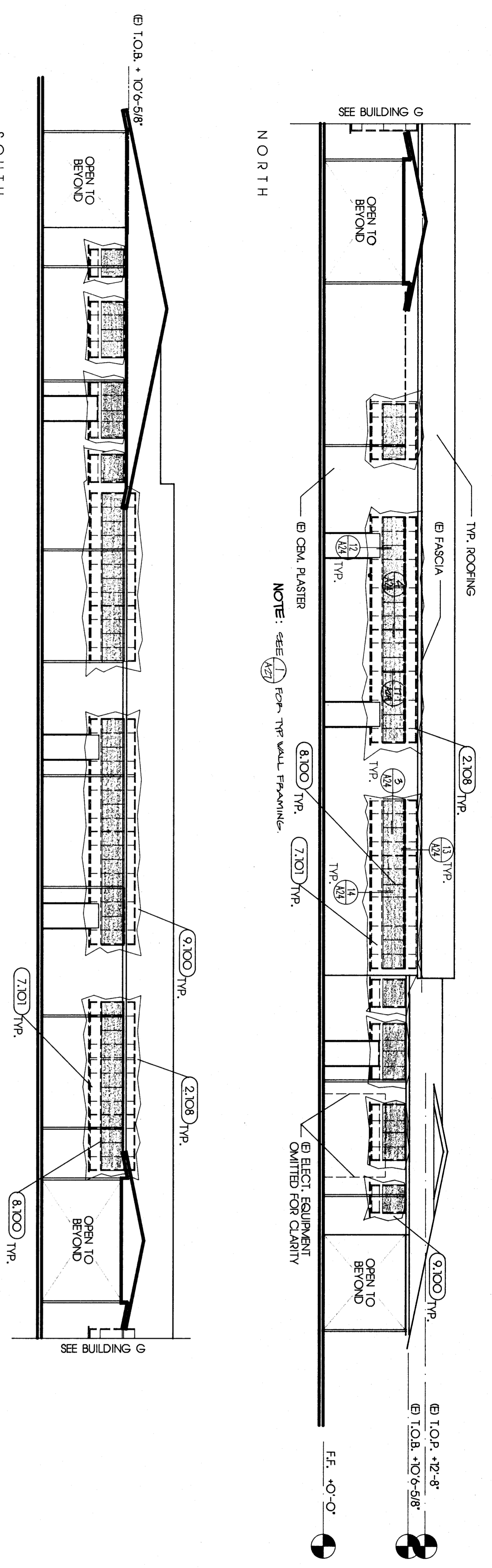
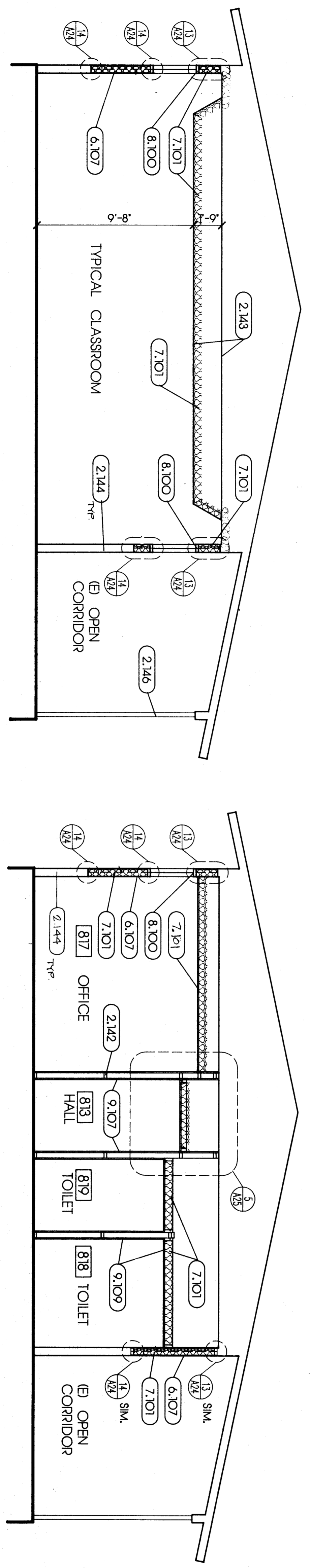


**KEYNOTES**

2.104	REMOVE (E) DRINKING FOUNTAIN;	02072
2.108	SEE PUMBING PLANS	02072
2.109	REMOVE (E) WINDOW SASH	02072
2.117	COUNTERTOPS CABINET W/O/R	02072
2.142	(E) 2X BLOCKING	
2.144	(E) WALL (SEE SCHEDULE @ 1510 C.)	
2.146	(E) COLUMN	
6.107	INTELL (E) OSHW G W/2X6 STUDS @16" O.C.	06001
7.101	R-19 MIN. INSULATION	07213
8.100	ALUMINUM STOREFRONT	08410
9.100	PORTLAND CEMENT PLASTER TO 5/8" MIN. Gypsum BOARD	09220
9.107	GYP. BD. W/ VERBER PLASTER	09260
9.109	MATCH (E) VCT WHERE (E) VCT IS SCHEDULED TO REMAIN	09650
9.112	THROUGH DRINKING FOUNTAIN; SEE PUMBING PLANS	15400
15.103	(E) MECHANICAL REGISTERS, CHILDES, ETC.	



**EXTERIOR ELEVATIONS**



**TYPICAL SECTIONS**

1/8" = 1'-0"

1/4" = 1'-0"

<p><b>pechin associates aia</b></p> <p>1400 easton drive suite 138 bakersfield, ca 93309 (805)322-2021</p>	<p><b>Bessie E. Owens Elementary School Modernization</b> Bakersfield City School District</p>	DATE	ISSUE FOR	<p>THESE DRAWINGS, RELATED SPECIFICATIONS, IDEAS, DESIGNS, AND ARRANGEMENTS REPRESENTED THEREBY ARE AND SHALL REMAIN THE PROPERTY OF THE ARCHITECT; AND NO PART THEREOF SHALL BE COPIED, DISCLOSED TO OTHERS OR USED IN CONNECTION WITH ANY WORK OR PROJECT OTHER THAN THE SPECIFIC PROJECT FOR WHICH THEY HAVE BEEN PREPARED AND DEVELOPED WITHOUT THE WRITTEN CONSENT OF THE ARCHITECT. VISUAL CONTACT WITH THESE DRAWINGS OR SPECIFICATIONS SHALL CONSTITUTE CONCLUSIVE EVIDENCE OF ACCEPTANCE OF THESE RESTRICTIONS.</p> <p>WRITTEN DIMENSIONS ON THESE DRAWINGS SHALL HAVE PRECEDENCE OVER SCALED DIMENSIONS; CONTRACTORS SHALL VERIFY AND BE RESPONSIBLE FOR ALL DIMENSIONS AND CONDITIONS ON THE JOB AND THIS OFFICE MUST BE NOTIFIED OF ANY VARIATIONS FROM THE DIMENSIONS AND CONDITIONS SHOWN BY THESE DRAWINGS.</p> <p>DETAILED SHOP DRAWINGS MUST BE SUBMITTED TO THIS OFFICE FOR REVIEW BEFORE PROCEEDING WITH THE FABRICATION OF ANY PRODUCT TO BE INCLUDED IN THIS PROJECT.</p>
		DATE	REVISION	