

INTELLECTUAL PROPERTY & PROPRIETARY RIGHTS STATEMENT  
COPYRIGHT © AMERICAN MODULAR SYSTEMS (AMS)  
AMS OWNS ALL COPYRIGHT AND OTHER INTELLECTUAL PROPERTY AND PROPRIETARY RIGHTS IN THESE DRAWINGS, SPECIFICATIONS, AND THE MATERIAL CONTAINED HEREIN. CERTAIN ELEMENTS SHOWN IN THESE DOCUMENTS ARE REGISTERED TRADEMARKS OF AMS. ALL PATENTABLE MATERIALS CONTAINED IN THESE DOCUMENTS MAY NOT BE REPRODUCED, TRANSMITTED, COPIED, DISTRIBUTED, MODIFIED, OR OTHERWISE DISPOSED OF (DIRECTLY OR INDIRECTLY) AND MAY NOT BE USED IN WHOLE OR IN PART TO ASSIST IN THE CONSTRUCTION, DESIGN, OR OTHER MARKING OF, OR FOR THE PURPOSE OF FURNISHING ANY INFORMATION FOR THE CONSTRUCTION OF, OTHER DRAWINGS, SPECIFICATIONS, PRINTS, APPROPRIATE OR OTHER TRADEMARKS, WITHOUT THE EXPRESS WRITTEN PERMISSION OF AMS. ANY SUBMITTAL OR DISTRIBUTION TO MEET OFFICIAL REGULATORY REQUIREMENTS WILL NOT BE CONSIDERED AS AN AGREEMENT OR ASSIGNMENT OF AMS' COPYRIGHT OR OTHER INTELLECTUAL-PROPERTY OR PROPRIETARY RIGHTS.  
PRE-CHECKED SET NAME

24'x40' THRU 120'x40' HIGH PITCH MODULAR BUILDINGS

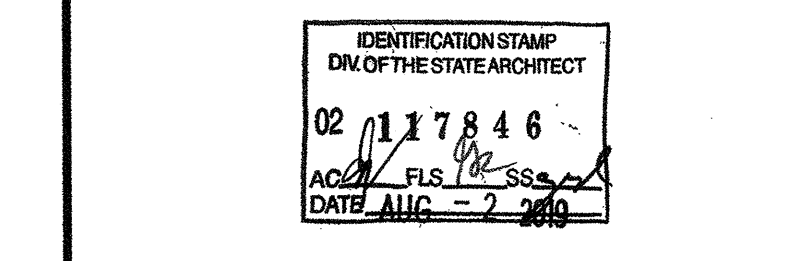
SITE SPECIFIC PROJECT NAME

SHEET TITLE  
**TYPICAL ELECTRICAL PLAN**

MANUFACTURER PROFESSIONAL OF RECORD ON PC



THESE DRAWINGS ARE PRELIMINARY AND NOT FOR CONSTRUCTION UNLESS CHANGED AS SHOWN BY THE OWNER OF RECORD.  
PROJECT SPECIFIC STATE AGENCY APPROVAL



ORIGINAL PC STATE AGENCY APPROVAL

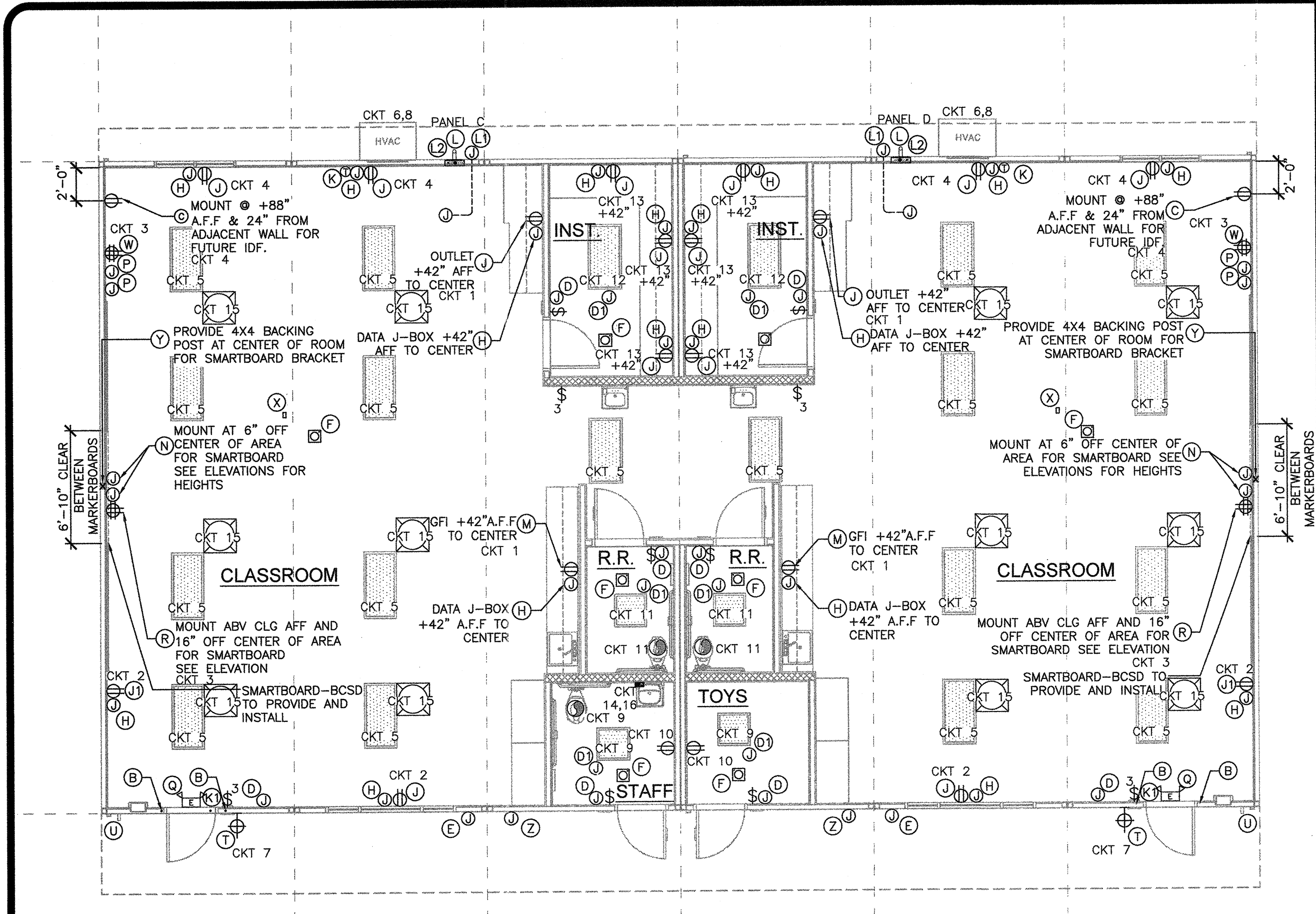
BASED ON PC# 02-115726  
**PRE-CHECK (PC) DOCUMENT**  
CODE: 2018.CBC  
A SEPARATE PROJECT APPLICATION FOR CONSTRUCTION IS REQUIRED.

REVISIONS

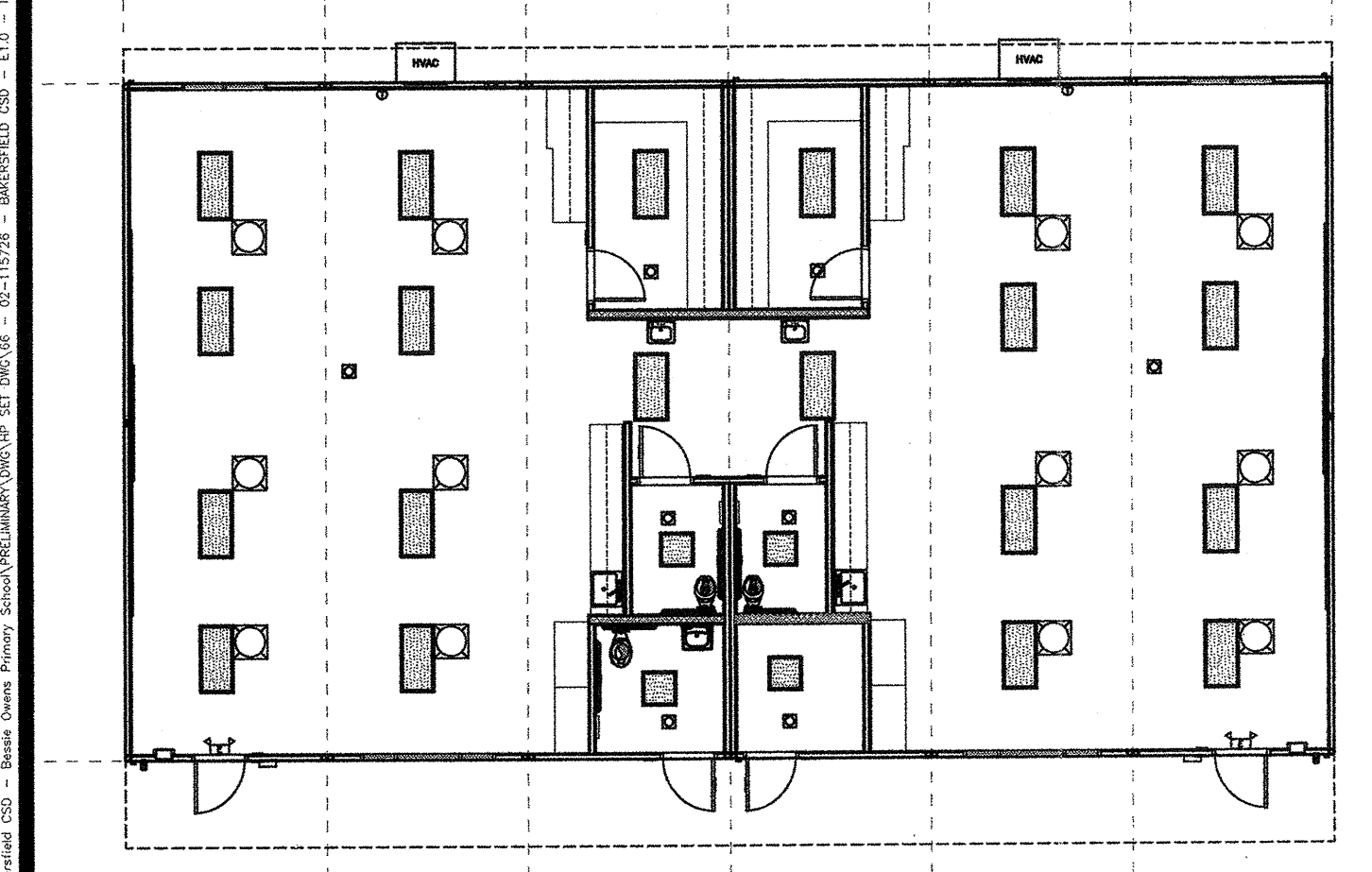
NO.	DATE	DESCRIPTION

DRAWN BY: AH  
SCALE: AS NOTED  
DATE: 06/20/19  
SHEET NUMBER

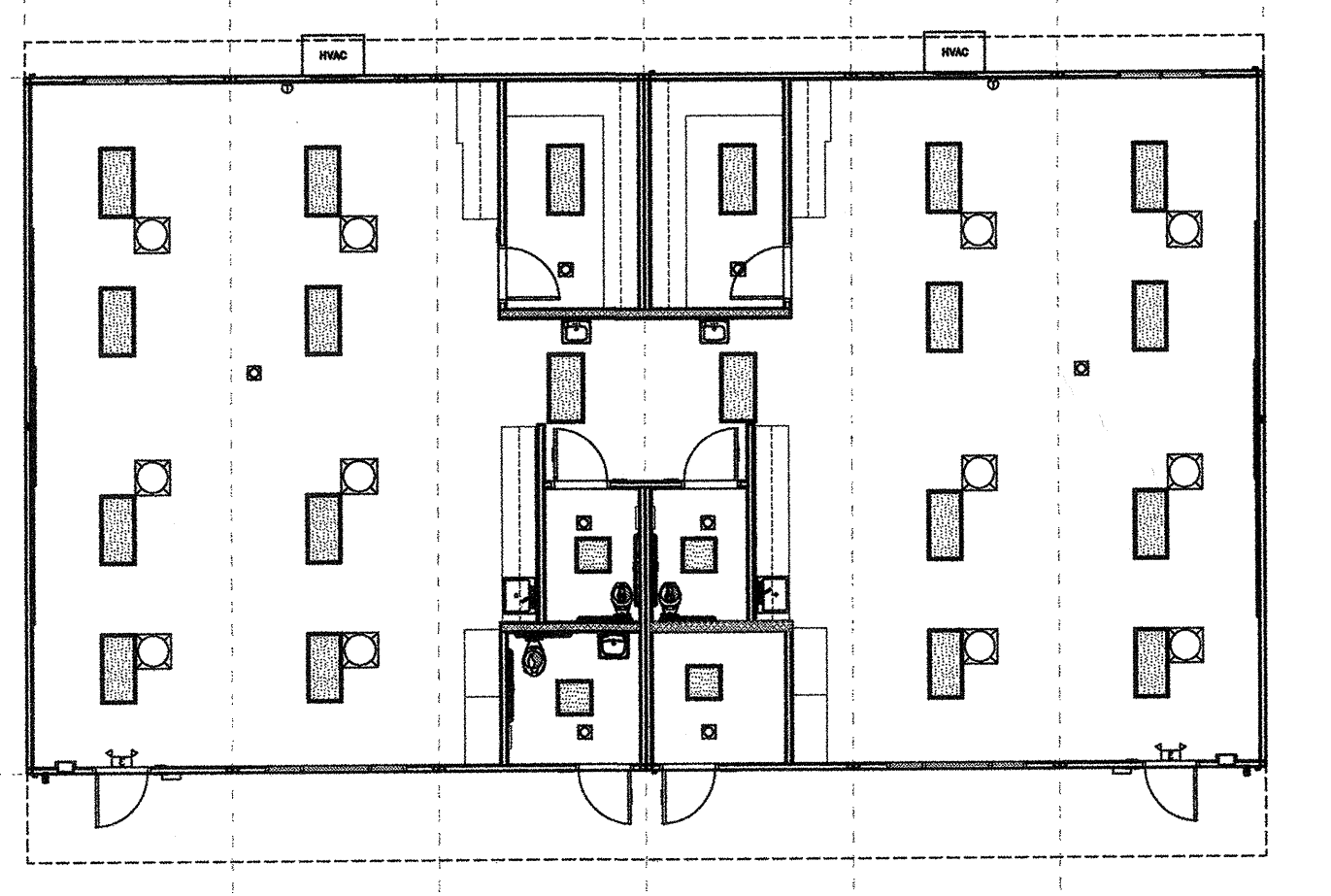
**E1.0B-02**



TYPICAL KINDER CLASSROOM ELECTRICAL PLAN SCALE: 3/16" = 1'-0" 1



KINDER BUILDING 3 FLOOR PLAN SCALE: 3/32" = 1'-0" 3



KINDER BUILDING 4 FLOOR PLAN SCALE: 3/32" = 1'-0" 4

**KINDER CLASSROOM LOAD PANEL C CALCULATIONS**

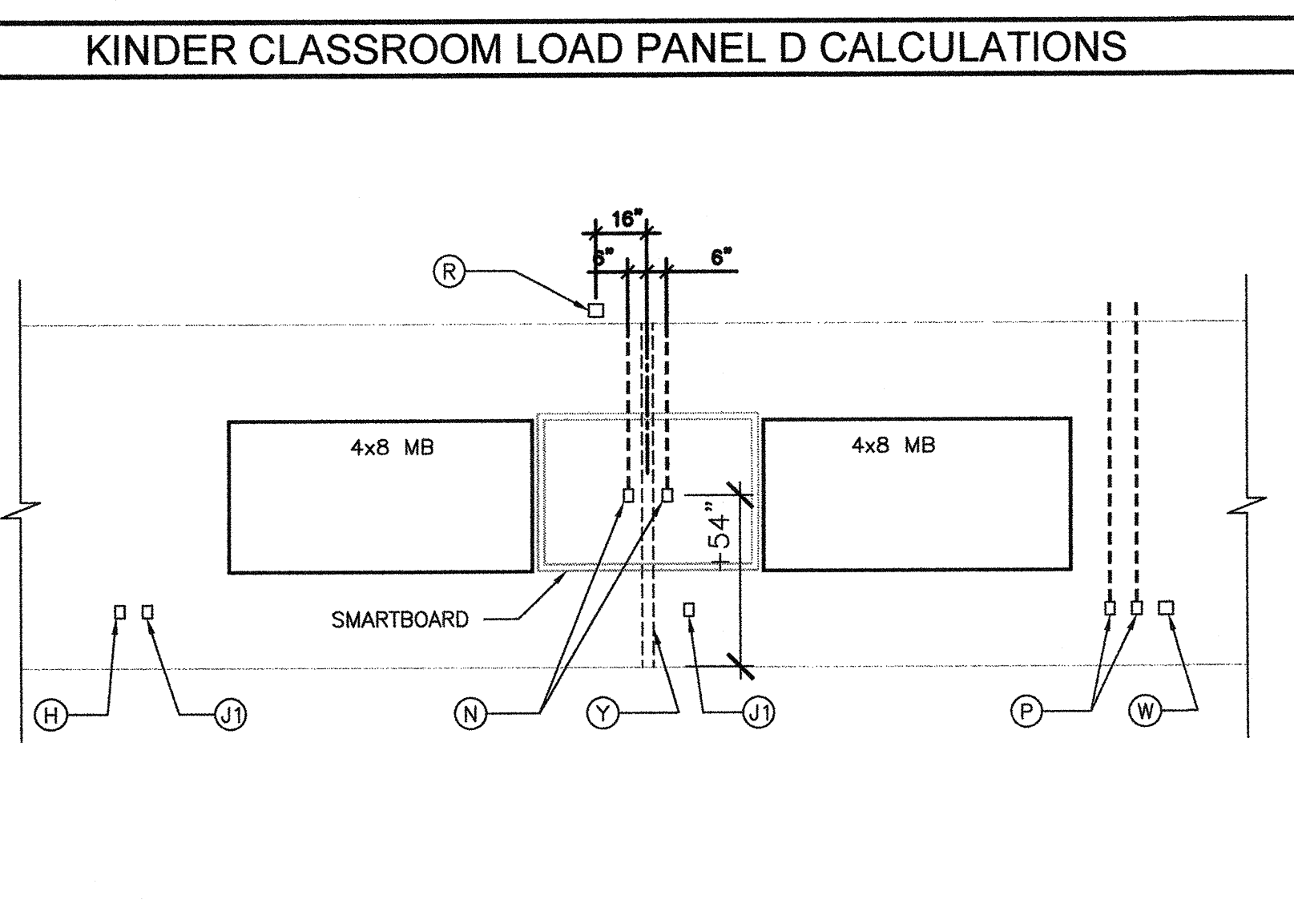
OBJECT	WATTAGE	NO	LCL	BUS:		MAIN:		LOCATION:		FEED:		MOUNTING:	
				A	B	A	B	INTERIOR	EXTERIOR	RECESSED			
RECEPTS	180	2	360	20	1	#12	1	#12	1	20	360	2	180
RECEPTS	180	5	900	20	1	#12	5	#12	1	20	900	5	180
INTERIOR LIGHTS	50	9	450	20	1	#12	9	#12	1	20	450	9	50
EXTERIOR LIGHT	100	1	100	20	1	#12	1	#12	1	20	100	1	100
STAFF R/LIGHTS	194	1	194	20	1	#12	1	#12	1	20	194	1	194
R/R LIGHTS	180	3	540	20	1	#12	3	#12	1	20	540	3	180
INST. RECEPTS	240	8	1920	20	1	#12	8	#12	1	20	1920	8	240
SOLATUBES	240	8	1920	20	1	#12	8	#12	1	20	1920	8	240
FIRE ALARM	1500	1	1500	20	1	#12	1	#12	1	20	1500	1	1500
LEG TOTALS	3284	454	3284	20	1	#12	454	#12	1	20	3284	454	3284
LCL: 3340-3999-32890													
TOTAL WATTS=3284													

KINDER CLASSROOM LOAD PANEL C CALCULATIONS

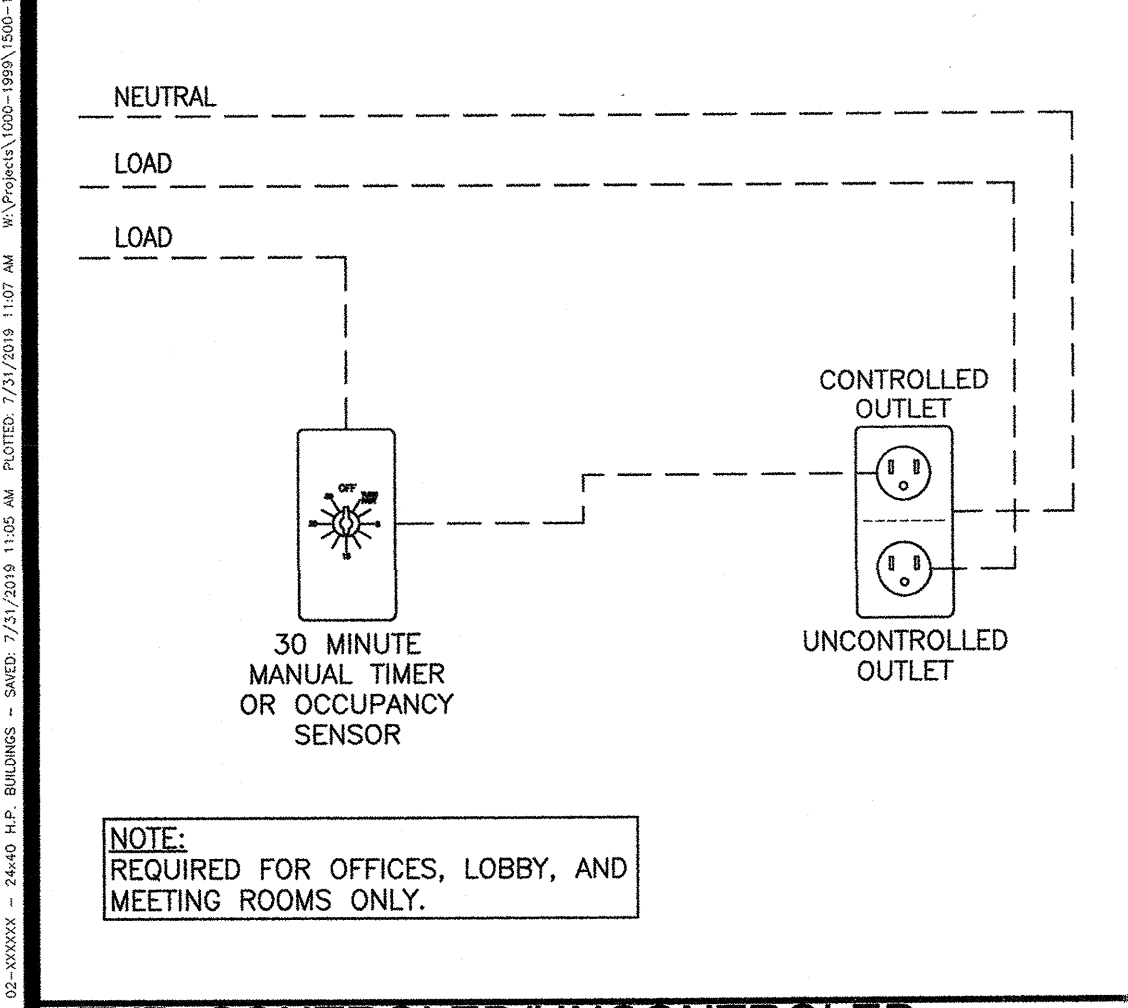
**KINDER CLASSROOM LOAD PANEL D CALCULATIONS**

OBJECT	WATTAGE	NO	LCL	BUS:		MAIN:		LOCATION:		FEED:		MOUNTING:	
				A	B	A	B	INTERIOR	EXTERIOR	RECESSED			
RECEPTS	180	2	360	20	1	#12	1	#12	1	20	360	2	180
RECEPTS	180	5	900	20	1	#12	5	#12	1	20	900	5	180
INTERIOR LIGHTS	50	9	450	20	1	#12	9	#12	1	20	450	9	50
EXTERIOR LIGHT	100	1	100	20	1	#12	1	#12	1	20	100	1	100
STAFF R/LIGHTS	194	1	194	20	1	#12	1	#12	1	20	194	1	194
R/R LIGHTS	180	3	540	20	1	#12	3	#12	1	20	540	3	180
INST. RECEPTS	240	8	1920	20	1	#12	8	#12	1	20	1920	8	240
SOLATUBES	240	8	1920	20	1	#12	8	#12	1	20	1920	8	240
FIRE ALARM	1500	1	1500	20	1	#12	1	#12	1	20	1500	1	1500
LEG TOTALS	3320	454	3320	20	1	#12	454	#12	1	20	3320	454	3320
LCL: 3340-3999-32865													
TOTAL WATTS=3320													

KINDER CLASSROOM LOAD PANEL D CALCULATIONS



KINDER CLASSROOM SMARTBOARD WALL ELEVATION SCALE: 1/4" = 1'-0" 5



TYP. CONTROLLED/UNCONTROLLED RECEPTACLE WIRING DIAGRAM SCALE: 1/4" = 1'-0" 2

**ENERGY CONTROLS**

1. THE PROJECT ARCHITECT SHALL BE RESPONSIBLE FOR THE PLACEMENT OF HEAT & SMOKE DETECTORS, EVACS AND PULL STATIONS AND COMPLETE FIRE ALARM SYSTEM WHEN THE SITE SPECIFIC PROJECT IS REQUIRED TO MEET THE PROVISIONS OF SB 575 & CBC 907.2.3.
2. ANY MONITORING EQUIPMENT OR ASSOCIATED SENSORS ARE SITE SPECIFIC AND ARE NOT INCLUDED IN THIS BASE PC.
3. PULL STATIONS ARE REQUIRED AT EVERY EXIT. AT ANY SPACE REQUIRING 2 OR MORE EXITS, PROVIDE EXIT SIGNS (CBC 1013) AND EMERGENCY EXIT ILLUMINATION (CBC 1008).
4. SEE PLANS FOR LOCATIONS OF ALL DEVICES.
5. STUB-OUT LOCATIONS FOR ELECTRICAL PANEL, FIRE ALARM, AND DATA BOXES ARE SHOWN DIAGRAMMATICALLY ONLY. EXACT LOCATIONS MAY VARY +/- SEVERAL FEET. PLEASE CONTACT AMERICAN MODULAR SYSTEMS FOR EXACT LOCATIONS. POINT OF CONNECTION WILL BE AT FACE OF BUILDING.
6. STUB-UP ALL FIRE ALARM JUNCTION BOXES TO ACCESSIBLE ATTIC SPACE WITH 1/2" MIN. GALV. THIN WALL TUBING (EMT). DO NOT CONNECT FIRE ALARM CONDUIT WITH ANY OTHER ELECTRICAL CONDUIT.
7. THE LIGHTS FOR EACH ROOM OVER 250 SQ FT SHALL BE CONTROLLED BY ULTRASONIC OCCUPANCY SENSOR: WATT STOPPER W-500A, W-1000A, OR W-2000A (OR EQUAL) BASED ON THE ROOM SIZE, IN CONJUNCTION WITH BI-LEVEL SWITCHING.

ENERGY NOTES 3

**GENERAL NOTES**

8. FIXTURE MOUNTING SHALL COMPLY WITH CALIFORNIA SEISMIC REGULATIONS.
9. LIGHTING FIXTURES MAY BE INSTALLED ROTATED 90° FROM SHOWN TO MATCH T-BAR GRID LAYOUT.

**DEMAND RESPONSE CONTROLS**

1. DEMAND RESPONSE CONTROLS ARE REQUIRED IN BUILDINGS LARGER THAN 10,000 S.F.
2. DEMAND RESPONSE CONTROLS, WHERE REQUIRED, ARE TO BE PROVIDED BY OTHERS.
3. DEMAND RESPONSE CONTROLS AND EQUIPMENT SHALL BE CAPABLE OF RECEIVING AND AUTOMATICALLY RESPONDING TO AT LEAST ONE STANDARD-BASED MESSAGING PROTOCOL WHICH ENABLES DEMAND RESPONSE AFTER RECEIVING A DEMAND SIGNAL.
4. SITE-SPECIFIC PROJECTS WHICH REQUIRE DEMAND RESPONSE CONTROLS MUST INCLUDE THE SUBMITTAL OF FORM NRCC-ELC-01-E TO DSA (BY OTHERS).

GENERAL NOTES 4

**KEYNOTES**

- ① PROVIDE 1" CONDUIT FROM ATTIC TO 6" BELOW HEADER. SWEEP THROUGH KING STUD AND TRIMMER INTO VOID AREA OF DOOR JAMB FOR FUTURE DOOR LOCK CONTROLS. PROVIDE SLIGHT TURN DOWN ONCE INTO JAMB AREA.
- ② PROVIDE SURGE PROTECTED DUPLEX OUTLET FOR FUTURE IDF CABINET. LOCATE AS INDICATED ON PLAN. PROVIDE CIRCUIT IN ELECTRICAL PANEL AS INDICATED ON PLAN.
- ③ J-BOX ONLY (HORN/SPEAKER) - INSTALL 4" SQ. J-BOX (4" SQ. x 2-1/8" DEEP) AT +80" FROM FLOOR. 3/4" CONDUIT STUBBED ABOVE CEILING. BOX SHALL BE MOUNTED FLUSH WITH INTERIOR WALL FINISH.
- ④ J-BOX ONLY (SMOKE DETECTOR) - INSTALL 45 BOX WITH 3/0 PLASTER RING FLUSH WITH T-BAR CEILING/ HARD LID SURFACE. (INSTALL PER DSA APPROVED PC PLANS)
- ⑤ J-BOX ONLY (EXTERIOR FIRE HORN/SPEAKER) - INSTALL 4" SQ. J-BOX (4" SQ. x 2-1/8" DEEP) AT +90" FROM FLOOR. 3/4" CONDUIT STUBBED ABOVE CEILING. BOX SHALL BE MOUNTED FLUSH WITH EXTERIOR WALL FINISH.
- ⑥ CEILING MOUNTED OCCUPANCY SENSOR. N-LITE BRAND- CAT 5 LINKED
- ⑦ J-BOX ONLY (DATA OUTLET) - 4" SQ. WITH SINGLE DEVICE RING WITH 3/4" CONDUIT STUBBED ABOVE CEILING.
- ⑧ STANDARD DUPLEX OUTLET LOCATION. PROVIDE CIRCUITS IN ELECTRICAL PANEL AS INDICATED ON PLAN. THESE LOCATIONS INDICATED ON THE PLANS ARE THE ONLY LOCATIONS WHERE OUTLETS ARE REQUIRED. DO NOT DEVIATE.
- ⑨ STANDARD SURGE PROTECTED DUPLEX OUTLET LOCATION. PROVIDE CIRCUITS IN ELECTRICAL PANEL AS INDICATED ON PLAN. THESE LOCATIONS INDICATED ON THE PLANS ARE THE ONLY LOCATIONS WHERE OUTLETS ARE REQUIRED. DO NOT DEVIATE.
- ⑩ J-BOX ONLY (FUTURE POWER). PROVIDE CONDUIT RACEWAY TO ELECTRICAL PANEL. NO WIRES OR OUTLET AT THIS TIME.
- ⑪ J-BOX ONLY (T-STAT). 4" SQ. WITH SINGLE DEVICE RING PLACED HORIZONTALLY. BCSO WILL PROVIDE T-STAT. PLEASE NOTE THAT THE CONTROL WIRE FOR THE HVAC UNIT WILL NEED TO BE FACTORY INSTALLED FROM THE UNIT TO THE J-BOX FOR FUTURE INCLUSION OF STANDARD DISTRICT T-STATS. PROVIDE 4" SQ. J-BOX WITH SINGLE DEVICE RING. PLACE RING HORIZONTAL AT 48" MAX. TO TOP OF BOX.
- ⑫ PROVIDE TIME DELAYED HVAC SHUT DOWN DOOR SWITCH. INTENT IS TO SHUT DOWN HVAC UNIT IF DOOR IS LEFT OPEN TOO LONG.
- ⑬ POWER AND GROUND ENTRANCES TO THE RELOS NEED TO BE ACCOMPLISHED BY ADDING A CONDUIT NIPPLE FOR THE GROUND AND POWER WIRES AT THE REAR OF THE PANELS THROUGH THE WALL AND FINISH.
- ⑭ AS BOX AT 18" FROM F.F. WITH DOUBLE DEVICE RING WITH 1" CONDUIT INTO ATTIC SPACE TO AS DEEP FROM FIRE ALARM CABLE.
- ⑮ PROVIDE 3/4" CONDUIT FROM ELECTRICAL PANEL TO ATTIC FOR FUTURE GROUNDING PURPOSES
- ⑯ S.F.I. RECEPTACLE MOUNT AS INDICATED ON PLAN AT CABINET LOCATION. MOUNT AT STANDARD HEIGHT IN CLASSROOM AREAS. PROVIDE CIRCUIT IN ELECTRICAL PANEL AS INDICATED ON PLAN.
- ⑰ SINGLE GANG DEEP MUD RING. LOCATE AT +54" ABOVE FINISH FLOOR. PROVIDE 2" CONDUIT ANCHORED TO FRAMING BETWEEN MUD RING "N" AND ABOVE DOUBLE TOP PLATE. NO HARD CONNECTIONS AT MUD RINGS. PROVIDE PULL STRING.
- ⑱ SINGLE GANG DEEP MUD RING. LOCATE AT STANDARD MOUNTING HEIGHT. PROVIDE 2" CONDUIT ANCHORED TO FRAMING FROM MUD RING TO ABOVE CEILING. NO HARD CONNECTIONS AT MUD RINGS. PROVIDE PULL STRING.
- ⑲ INSTALL ELECTRIC LIGHTED EXIT SIGN WITH INTEGRAL EMERGENCY EGRESS LIGHTING AND 90 MIN BATTERY BACKUP.
- ⑳ WALL MOUNTED SURGE PROTECTED QUADPLEX OUTLET. LOCATE ABOVE CEILING SMARTBOARD. PROVIDE CIRCUIT IN ELECTRICAL PANEL AS INDICATED ON PLAN
- ㉑ SINGLE GANG DEEP MUD RING AT +94" ABOVE FINISH FLOOR. PROVIDE 2" CONDUIT ANCHORED TO FRAMING FROM MUD RING TO ABOVE CEILING. NO HARD CONNECTIONS AT MUD RINGS. PROVIDE PULL STRING.
- ㉒ EXTERIOR LIGHT FIXTURE WITH BUILT IN PHOTO CELL. RAB LIGHTING SLIM 18 WITH PHOTOCELL AND 90 MIN BATTERY BACKUP.
- ㉓ PROVIDE AND INSTALL TRIMCO #1254 WALL MOUNTED STOP/DOOR HOLDER AT +78"
- ㉔ PROVIDE ADDITIONAL RECTANGULAR OPENING AT TRANSVERSE ROOF BEAMS FOR FUTURE DATA CONDUITS
- ㉕ WALL MOUNTED SURGE PROTECTED QUADPLEX OUTLET. LOCATE AT STANDARD OUTLET WALL HEIGHT
- ㉖ PROVIDE SINGLE GANG BOX WITH CEILING MOUNTING BRACKET AT CENTER OF ROOM IN T-BAR CEILING.
- ㉗ PROVIDE 4X4 BACKING POST AT CENTER OF ROOM FOR SMART BOARD BRACKET
- ㉘ J-BOX ONLY (EXTERIOR PA SYSTEM SPEAKER) - 4" SQ. WITH SINGLE DEVICE RING. INSTALL AT +90" FROM FLOOR.
- ㉙ SOLATUBE SWITCH MOUNT AT +48" MAX. TO TOP OF BOX

KEYNOTES 5