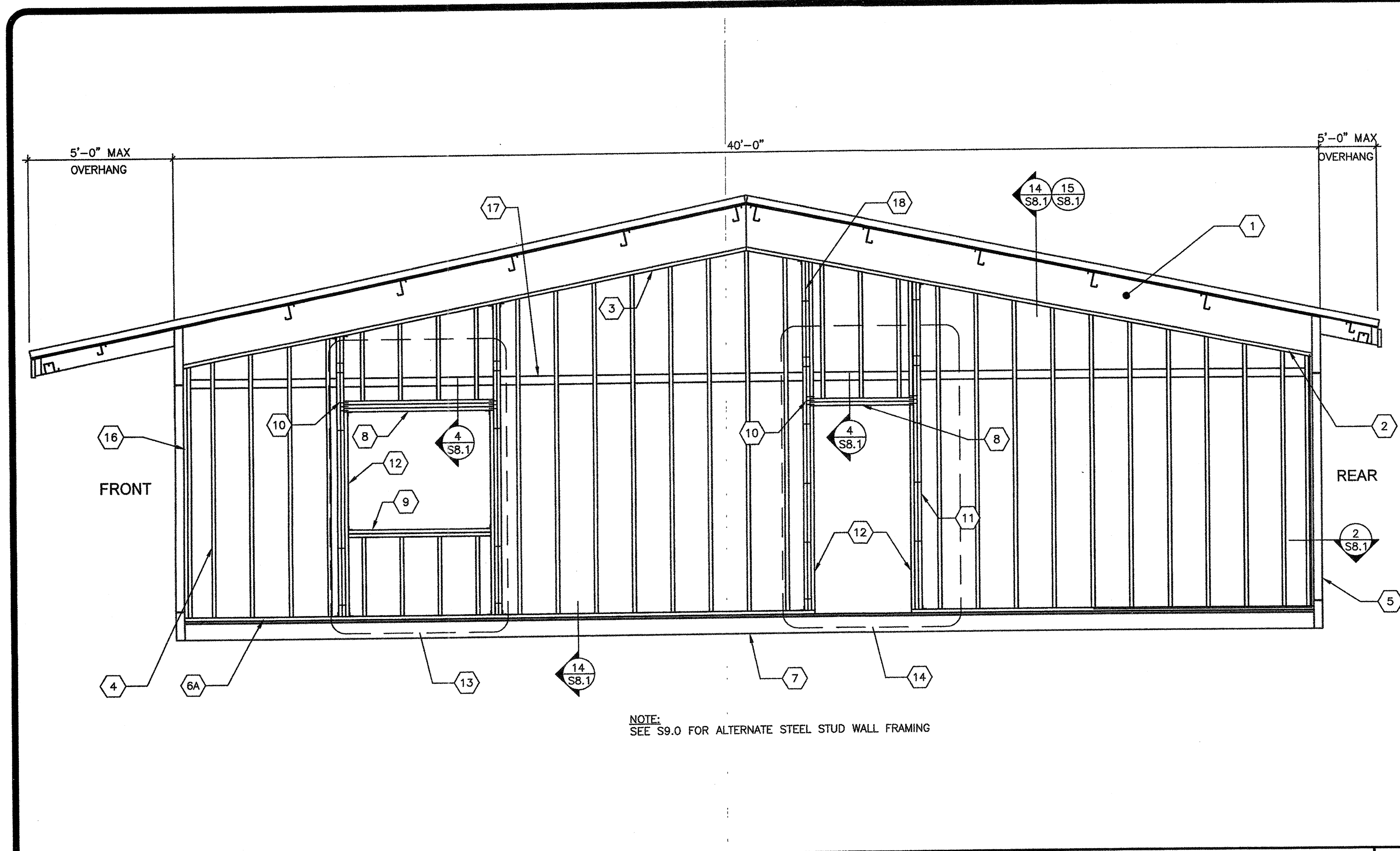




INTELLECTUAL PROPERTY & PROPRIETARY RIGHTS STATEMENT
COPYRIGHT © AMERICAN MODULAR SYSTEMS (AMS)
AMS OWNS ALL COPYRIGHT AND OTHER INTELLECTUAL PROPERTY AND PROPRIETARY RIGHTS IN THESE DRAWINGS, SPECIFICATIONS, AND THE MATERIAL CONTAINED HEREIN. CERTAIN ELEMENTS SHOWN IN THESE DOCUMENTS ARE REGISTERED TRADEMARKS OF AMS. ALL RIGHTS ARE RESERVED. NO PART OF THESE DOCUMENTS AND/OR ORIGINALS WITH AMS WILL REMAIN THE SOLE PROPERTY OF AMS. THESE DOCUMENTS, SPECIFICATIONS, AND THE MATERIAL CONTAINED HEREIN MAY NOT BE REPRODUCED, TRANSMITTED, COPIED, DISTRIBUTED, REPRODUCED, OR OTHERWISE DISPOSED OF (DIRECTLY OR INDIRECTLY) AND MAY NOT BE USED (IN WHOLE OR IN PART) TO ASSIST IN THE CONSTRUCTION, DESIGN, OR OTHER MARKING OF ANY BUILDING (INCLUDING OR OTHERWISE) WITHOUT THE EXPRESS WRITTEN PERMISSION OF AMS. ANY REPRODUCTION OR USE OF THESE DOCUMENTS, SPECIFICATIONS, OR PARTS THEREOF, EXCEPT AS EXPRESSLY PERMITTED BY WRITTEN CONSSENT OF AMS IN A WRITTEN AGREEMENT WITH AMS, SHALL BE CONSIDERED AS VIOLATION OF AMS' INTELLECTUAL PROPERTY RIGHTS AND WILL BE CONSIDERED AS PUBLICATION IN VIOLATION OF AMS' COPYRIGHT OR OTHER INTELLECTUAL PROPERTY OR PROPRIETARY RIGHTS.



- 1 ROOF BEAM PER SHEET S5.0
- 2 2x PLATE NO SPLICE
- 3 2x PLATE
- 4 2x STUDS SPACED PER SCHEDULE W/(3) 0.131"x3" END NAILS OR (4) 0.131"x3" TOE NAILS T&B TO PLATES TYP.
- 5 HSS COLUMN PER SHEET S5.0
- 6 2x BOTTOM PLATE (P.T. AT CONCRETE FLOORS)
- 6A 2x BOTTOM PLATE (P.T. AT CONCRETE FLOORS)
- 7 PERIMETER FLOOR BEAM PER SHEET S5.0
- 8 HEADER PER SCHEDULE AND DETAIL 4/SB.1
- 9 WINDOW SILL PER SCHEDULE
- 10 END NAILS THROUGH KING STUD TO HEADER PER SCHEDULE
- 11 KING STUDS PER SCHEDULE
- 12 2x TRIMMER
- 13 OPTIONAL WINDOW OPENING FRAMING PER SCHEDULE (REFER TO 4/- FOR DETAILS AND FLOOR PLANS FOR LOCATIONS)
- 14 OPTIONAL DOOR OPENING FRAMING PER SCHEDULE (REFER TO 5/- FOR DETAILS AND FLOOR PLANS FOR LOCATIONS)
- 15 HVAC OPENING @ EXTERIOR WALL (800# MAX WT.)
- 16 2x NAILER
- 17 2x BLOCKING
- 18 KING STUD PER SCHEDULE INTERNAL PER SCHEDULE

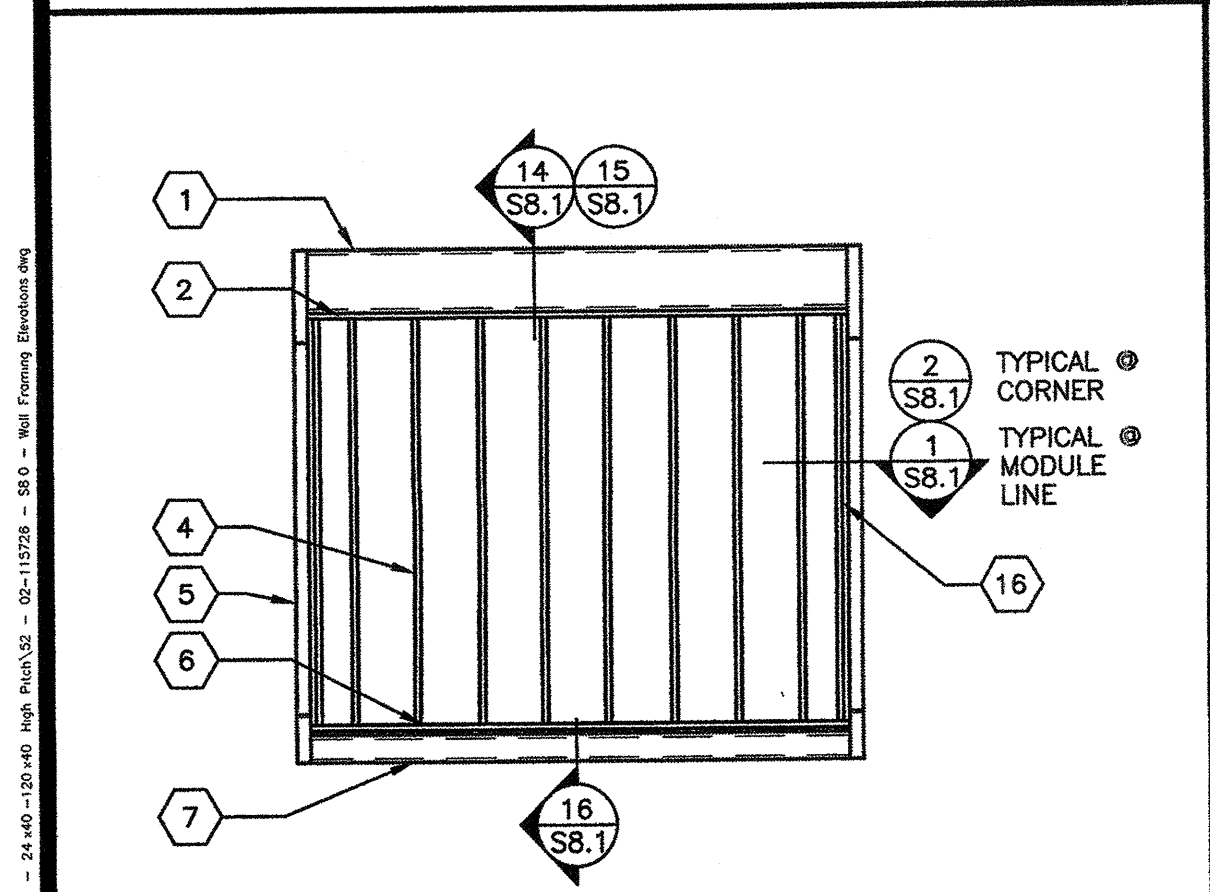
NOTE: SEE CARPENTRY NOTES SHEET N1.0 SECTION 6 FOR WOOD SPECIES & GRADE

KEY NOTES

FINISH TYPE	FNDN TYPE	COMMENTS	STUD TYPE	END WALLS		SIDE WALLS	
				TYPICAL SPACING	BLDG. @ CORNERS	TYPICAL SPACING	BLDG. @ CORNERS
5/8" PLYWOOD SHEATHING CONFORMING TO PS-1-09 VERTICAL GROOVES @ 8" O.C.	WOOD OR CONCRETE	WALL FINISH PER A5.0 & A5.1; (MAY INCLUDE METAL "S" WAVE PANELS PER DETAILS 1-3/A7.0)	2x4 @ 16" O.C. 2x6 @ 16" O.C.	@ 16" O.C.	DBL @ 16" O.C.	@ 16" O.C.	@ 16" O.C.
5/16" HARDIBOARD WITH SYNTHETIC STUCCO OR 5/8" HARDI-LAP SIDING	WOOD OR CONCRETE	WALL FINISH PER A5.4 & A5.5 (MAY INCLUDE TILE/BRICK VENEER PER A7.0)	2x4 @ 16" O.C. 2x6 @ 16" O.C.	@ 12" O.C.	DBL @ 12" O.C.	@ 16" O.C.	@ 16" O.C.
1/2" PLYWOOD SHEATHING CONFORMING TO PS-1-09, APA RATED, (5 PLY 32/16) OR 1/2" O.S.B. PANELS EXPOSURE 1 WITH 7/8" STUCCO	CONCRETE ONLY	WALL FIN. PER A5.2 & A5.3; (MAY INCLUDE TILE/BRICK VENEER PER A7.0)	2x4 @ 16" O.C. 2x6 @ 16" O.C.	@ 12" O.C.	DBL @ 12" O.C.	@ 16" O.C.	@ 16" O.C.

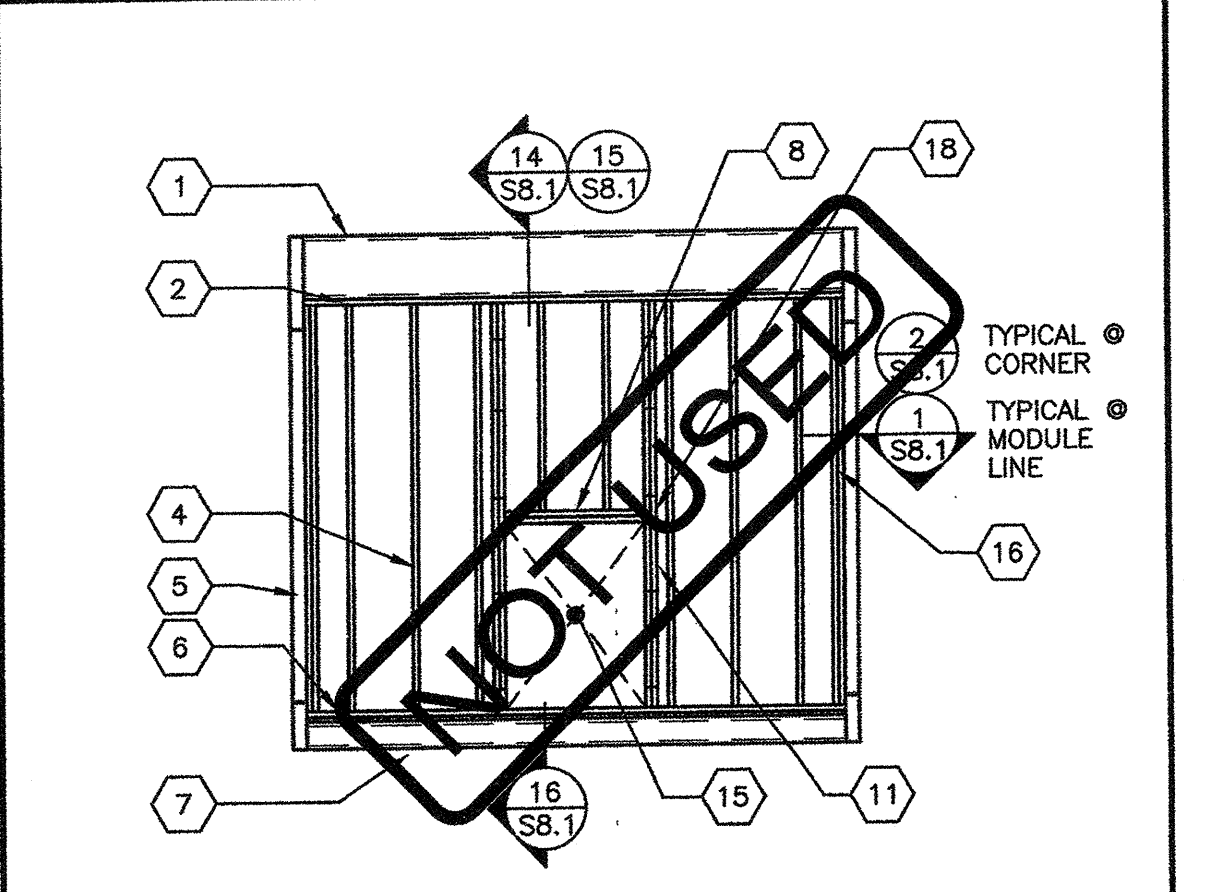
- ALL NAILS IN EXTERIOR APPLICATIONS TO BE GALVANIZED.
- BUILDING CORNERS ARE DEFINED AS A DISTANCE OF 4 FEET IN BOTH DIRECTIONS FROM EACH CORNER OF THE BUILDING
- TYPICAL PLYWOOD NAILING WHERE OCCURS 131"x2 1/4" GALV @ 6" O.C. E.N. & 12" O.C. F.N. (ALL EDGES BLOCKED)

TYPICAL SIDE WALL FRAMING



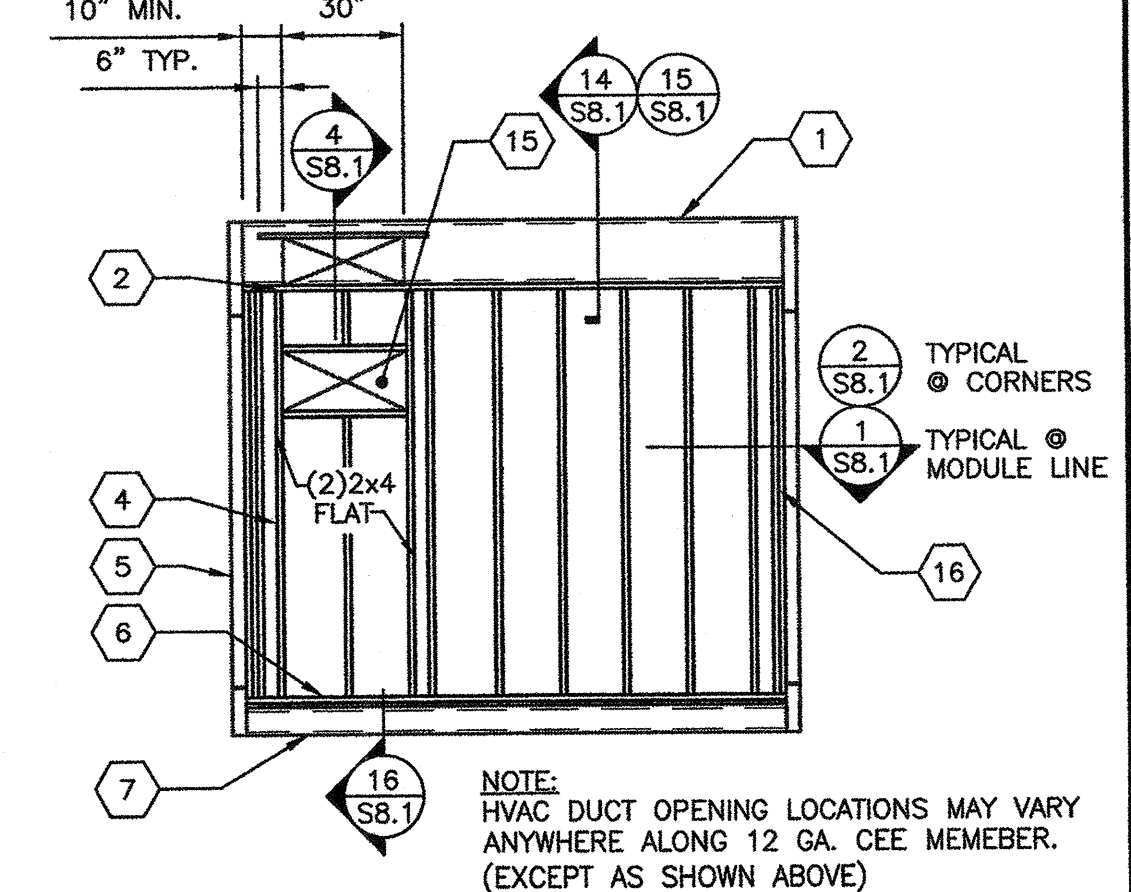
NOTE: SEE S9.0 FOR ALTERNATE STEEL STUD WALL FRAMING
TYP END WALL FRAMING w/NO OPENINGS SCALE 1/4"=1'-0" 1

TYP END WALL FRAMING w/INDOOR HVAC UNIT



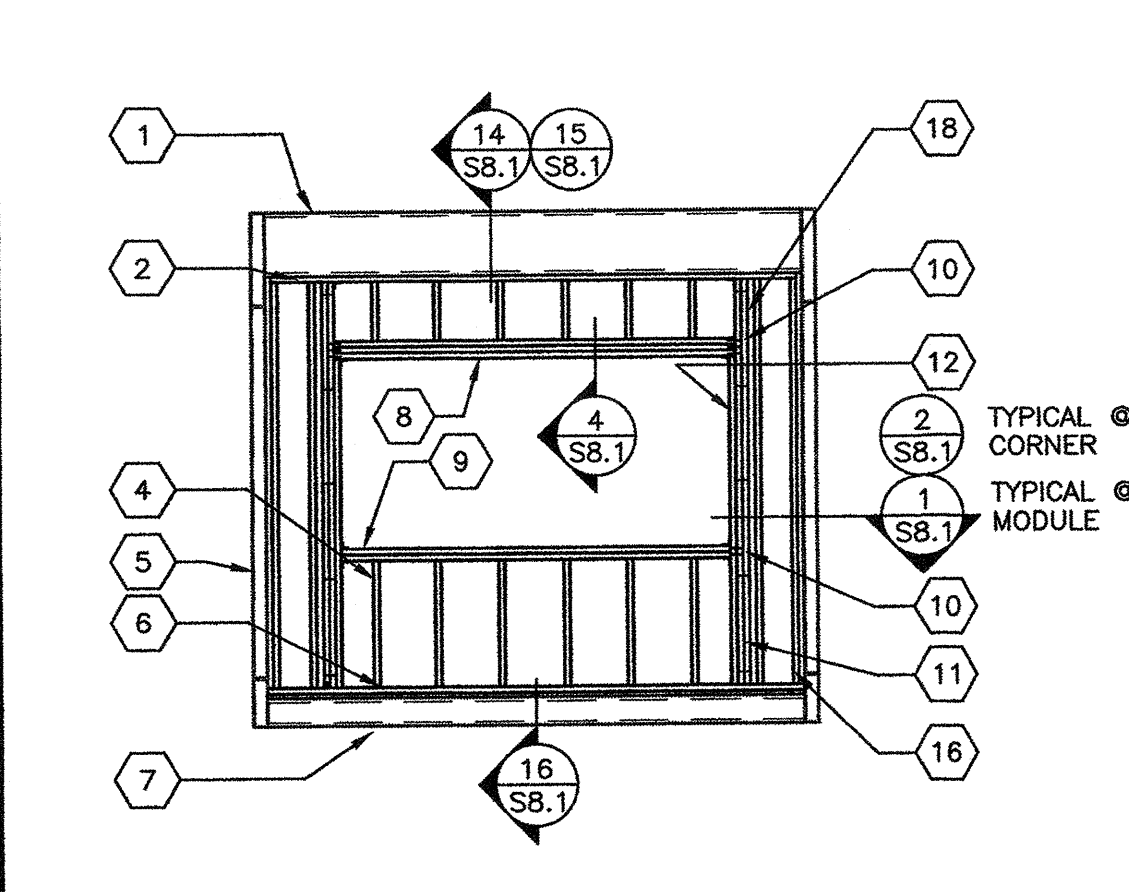
NOTE: SEE S9.0 FOR ALTERNATE STEEL STUD WALL FRAMING
TYP END WALL FRAMING w/INDOOR HVAC UNIT SCALE 1/4"=1'-0" 2

TYP END WALL FRAMING w/WALL HUNG HVAC UNIT



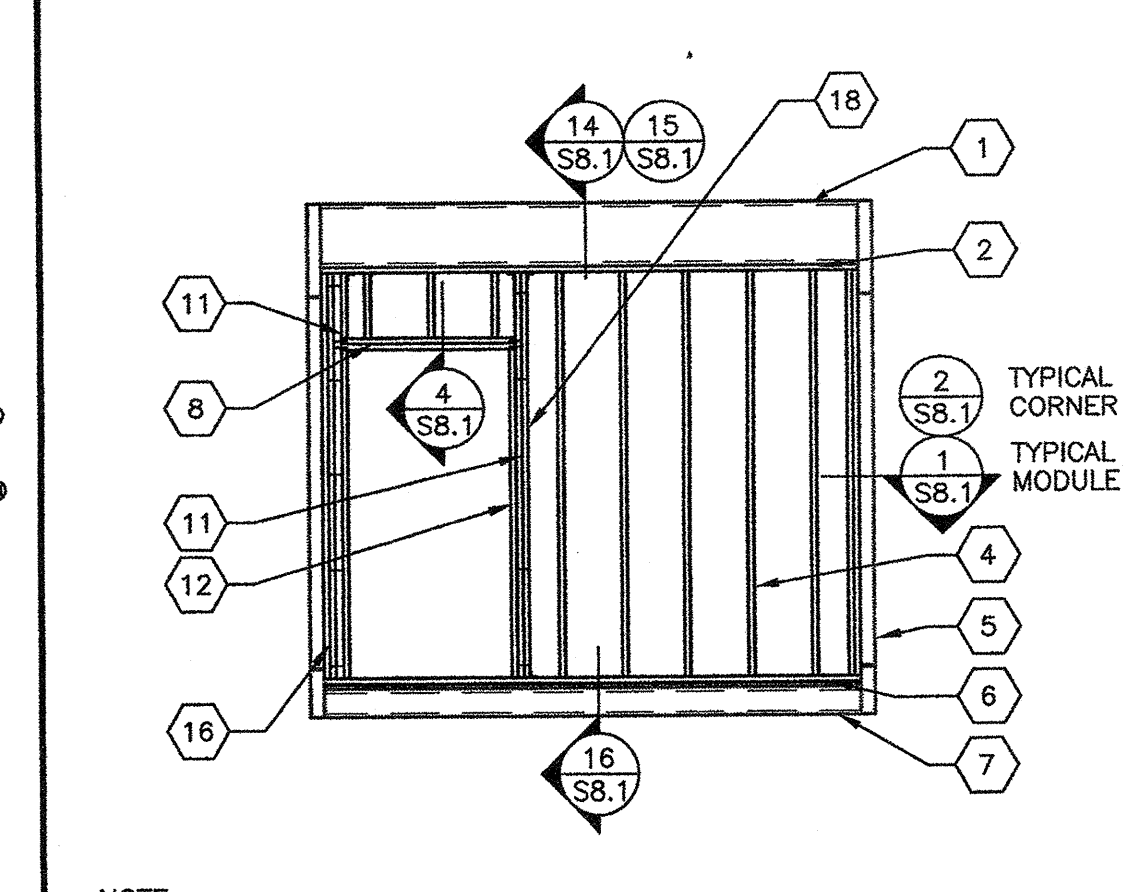
NOTE: SEE S9.0 FOR ALTERNATE STEEL STUD WALL FRAMING
TYP END WALL FRAMING w/WALL HUNG HVAC UNIT SCALE 1/4"=1'-0" 3

TYPICAL END WALL FRAMING w/WINDOW



NOTE: SEE S9.0 FOR ALTERNATE STEEL STUD WALL FRAMING
TYPICAL END WALL FRAMING w/WINDOW SCALE 1/4"=1'-0" 4

TYPICAL END WALL FRAMING w/DOOR



NOTE: SEE S9.0 FOR ALTERNATE STEEL STUD WALL FRAMING
TYPICAL END WALL FRAMING w/DOOR SCALE 1/4"=1'-0" 5

DOOR/WINDOW OPENINGS AT TYPICAL 2x6 SIDE & END WALLS (NO STUCCO)

OPENING	KING STUDS	KING STUDS INTERNAILING SPACING	HEADER MEMBERS	HEADER TO KING STUDS NAILS	SILL MEMBERS	SILL TO KING STUDS NAILS
8'-0" UP TO 10'-0"	2	16" O.C. MAX	3	10	2	4
6'-0" UP TO 8'-0"	2	16" O.C. MAX	3	8	2	4
3'-0" UP TO 6'-0"	2	16" O.C. MAX	2	6	2	4
3'-0" OR LESS	2	16" O.C. MAX	2	6	2	4

DOOR/WINDOW OPENINGS AT STUCCO 2x6 SIDE & END WALLS

OPENING	KING STUDS	KING STUDS INTERNAILING SPACING	HEADER MEMBERS	HEADER TO KING STUDS NAILS	SILL MEMBERS	SILL TO KING STUDS NAILS
8'-0" UP TO 10'-0"	3	16" O.C. MAX	3	10	2	4
6'-0" UP TO 8'-0"	3	16" O.C. MAX	3	8	2	4
3'-0" UP TO 6'-0"	3	16" O.C. MAX	2	6	2	4
3'-0" OR LESS	3	16" O.C. MAX	2	6	2	4

DOOR/WINDOW OPENINGS AT TYPICAL 2x4 END WALL (TRANSVERSE) (NO STUCCO)

OPENING	KING STUDS	KING STUDS INTERNAILING SPACING	HEADER MEMBERS	HEADER TO KING STUDS NAILS	SILL MEMBERS	SILL TO KING STUDS NAILS
8'-0" UP TO 10'-0"	4	20" O.C. MAX	4	6	4	4
6'-0" UP TO 8'-0"	3	20" O.C. MAX	3	5	2	4
3'-0" UP TO 6'-0"	3	20" O.C. MAX	2	5	2	4
3'-0" OR LESS	2	20" O.C. MAX	2	3	2	4

DOOR/WINDOW OPENINGS AT STUCCO 2x4 END WALL (TRANSVERSE)

OPENING	KING STUDS	KING STUDS INTERNAILING SPACING	HEADER MEMBERS	HEADER TO KING STUDS NAILS	SILL MEMBERS	SILL TO KING STUDS NAILS
8'-0" UP TO 10'-0"	6	16" O.C. MAX	3	5	3	4
6'-0" UP TO 8'-0"	5	16" O.C. MAX	3	5	3	4
3'-0" UP TO 6'-0"	4	16" O.C. MAX	2	5	2	4
3'-0" OR LESS	3	16" O.C. MAX	2	3	2	4

DOOR/WINDOW OPENINGS AT TYP. 2x4 SIDE WALL - NOT @ CORNERS (NO STUCCO)

OPENING	KING STUDS	KING STUDS INTERNAILING SPACING	HEADER MEMBERS	HEADER TO KING STUDS NAILS	SILL MEMBERS	SILL TO KING STUDS NAILS
8'-0" UP TO 10'-0"	8	16" O.C. MAX	5	9	3	6
6'-0" UP TO 8'-0"	7	16" O.C. MAX	3	7	2	6
3'-0" UP TO 6'-0"	6	16" O.C. MAX	3	6	2	4
3'-0" OR LESS	4	16" O.C. MAX	3	3	2	4

DOOR/WINDOW OPENINGS AT STUCCO 2x4 SIDE WALL - NOT @ CORNERS

OPENING	KING STUDS	KING STUDS INTERNAILING SPACING	HEADER MEMBERS	HEADER TO KING STUDS NAILS	SILL MEMBERS	SILL TO KING STUDS NAILS
8'-0" UP TO 10'-0"	12	16" O.C. MAX	6	9	4	6
6'-0" UP TO 8'-0"	10	16" O.C. MAX	3	7	2	6
3'-0" UP TO 6'-0"	8	16" O.C. MAX	3	6	2	4
3'-0" OR LESS	5	16" O.C. MAX	3	3	2	4

DOOR/WINDOW OPENINGS AT TYP. 2x4 SIDE WALL @ BLDG CORNERS (NO STUCCO)

OPENING	KING STUDS	KING STUDS INTERNAILING SPACING	HEADER MEMBERS	HEADER TO KING STUDS NAILS	SILL MEMBERS	SILL TO KING STUDS NAILS
8'-0" UP TO 10'-0"	5	12" O.C. MAX	4	6	4	4
6'-0" UP TO 8'-0"	4	12" O.C. MAX	3	5	2	4
3'-0" UP TO 6'-0"	3	12" O.C. MAX	2	5	2	4
3'-0" OR LESS	3	12" O.C. MAX	2	3	2	4

DOOR/WINDOW OPENINGS AT STUCCO 2x4 SIDE WALL @ BLDG CORNERS

OPENING	KING STUDS	KING STUDS INTERNAILING SPACING	HEADER MEMBERS	HEADER TO KING STUDS NAILS	SILL MEMBERS	SILL TO KING STUDS NAILS
8'-0" UP TO 10'-0"	7	12" O.C. MAX	5	6	6	6
6'-0" UP TO 8'-0"	4	12" O.C. MAX	3	5	3	6
3'-0" UP TO 6'-0"	5	12" O.C. MAX	2	5	2	4
3'-0" OR LESS	3	12" O.C. MAX	2	3	2	4

- PROVIDE (2) SIMPSON A34'S T&B OF KING STUDS TO PLATES FOR OPENINGS GREATER THAN 3'-0". PROVIDE (1) SIMPSON A34'S T&B OF KING STUDS TO PLATES FOR OPENINGS 3'-0" OR LESS.
- KING STUD INTERNAILING UTILIZING 0.131"x3" NAILS STAGGERED
- BUILDING CORNERS ARE DEFINED AS A DISTANCE OF 4 FEET IN BOTH DIRECTIONS FROM EACH CORNER OF THE BUILDING

OPENING SCHEDULES

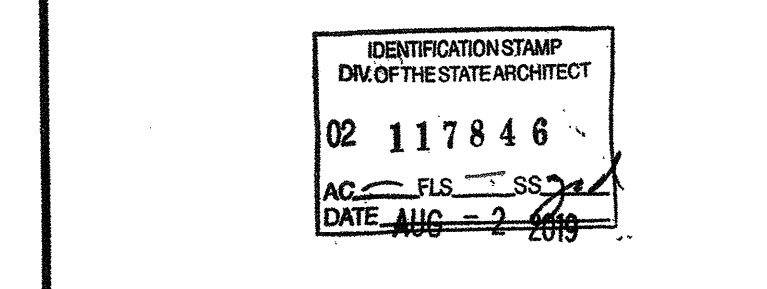
24'x40' THRU 120'x40' HIGH PITCH MODULAR BUILDINGS

WALL FRAMING ELEVATIONS & SCHEDULES - WOOD STUDS

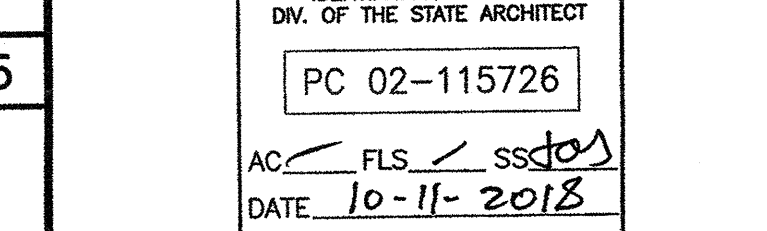
MANUFACTURER PROFESSIONAL OF RECORD OR PC



PROJECT SPECIFIC STATE AGENCY APPROVAL



ORIGINAL PC STATE AGENCY APPROVAL



PRE-CHECK (PC) DOCUMENT
CODE 2018 CBS
A SEPARATE PROJECT APPLICATION FOR CONSTRUCTION IS REQUIRED

REVISIONS
DRAWN BY: AS NOTED
SCALE: AS NOTED
DATE: SHEET NUMBER

S8.0-02