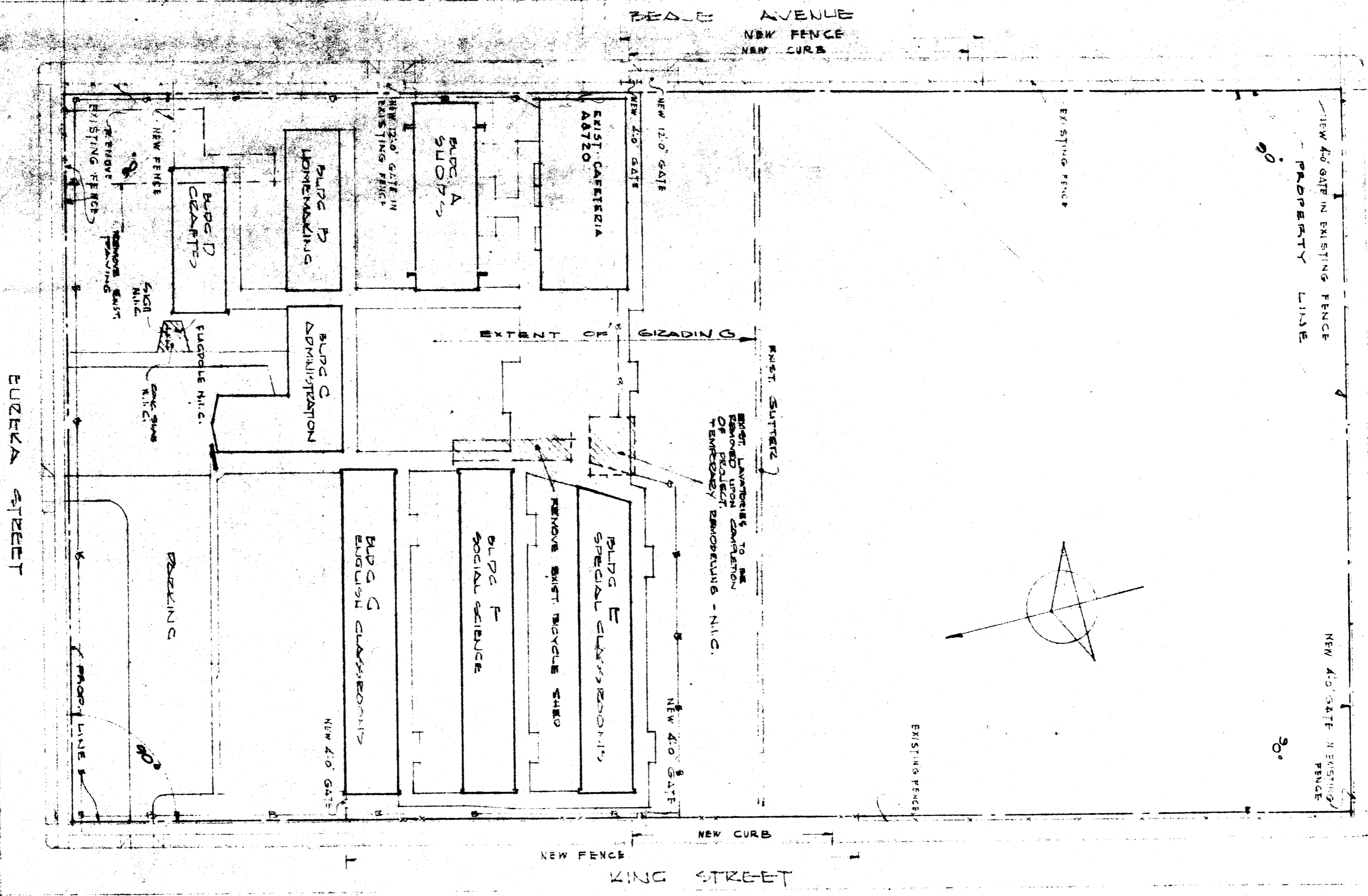


CHURCH STREET



1" = 30'-0"
PLOT PLAN

STATE OF CALIFORNIA
DEPT. OF PUBLIC WORKS
DIVISION OF ARCHITECTURE
ARCHT. NO. 10,828
DATE: 10-28-58

LEON O. SUPERINTENDENT OF SCHOOLS
BOARD OF EDUCATION
HAYWARD CITY SCHOOL

DATE: 10-28-58
JOB NO. 177
ARCHT. NO. 10,828

ROBERT N. EDDY
ARCHITECT AIA
2901 H ST. DAKERSFIELD CALIFORNIA 94506

LINCOLN JUNIOR HIGH SCHOOL
HAYWARD CITY SCHOOL DISTRICT
HAYWARD CALIFORNIA

SHEET TITLE

- A-1 GEARING AND DRAINAGE PLAN
- A-2 GEARING SECTIONS AND DRAINAGE DETAILS
- A-3 BUILDING LAYOUT AND COLUMN SPACING PLAN
- A-4 BLDG. A SHOPS - INTERIOR ELEVATIONS
- A-5 BLDG. A SHOPS - INTERIOR ELEVATIONS
- A-6 BLDG. B HOME MAKING - INTERIOR ELEVATIONS
- A-7 BLDG. B HOME MAKING - INTERIOR ELEVATIONS
- A-8 BLDG. C ADMINISTRATION - INTERIOR ELEVATIONS
- A-9 BLDG. C ADMINISTRATION - INTERIOR ELEVATIONS
- A-10 BLDG. C ADMINISTRATION - INTERIOR ELEVATIONS
- A-11 BLDG. C ADMINISTRATION - INTERIOR ELEVATIONS
- A-12 BLDG. C ADMINISTRATION - INTERIOR ELEVATIONS
- A-13 BLDG. C ADMINISTRATION - INTERIOR ELEVATIONS
- A-14 BLDG. C ADMINISTRATION - INTERIOR ELEVATIONS
- A-15 BLDG. C ADMINISTRATION - INTERIOR ELEVATIONS
- A-16 BLDG. C ADMINISTRATION - INTERIOR ELEVATIONS
- A-17 BLDG. C ADMINISTRATION - INTERIOR ELEVATIONS
- A-18 BLDG. C ADMINISTRATION - INTERIOR ELEVATIONS
- A-19 BLDG. C ADMINISTRATION - INTERIOR ELEVATIONS
- A-20 BLDG. C ADMINISTRATION - INTERIOR ELEVATIONS
- A-21 BLDG. C ADMINISTRATION - INTERIOR ELEVATIONS
- A-22 BLDG. C ADMINISTRATION - INTERIOR ELEVATIONS
- A-23 BLDG. C ADMINISTRATION - INTERIOR ELEVATIONS
- A-24 BLDG. C ADMINISTRATION - INTERIOR ELEVATIONS
- A-25 BLDG. C ADMINISTRATION - INTERIOR ELEVATIONS
- A-26 BLDG. C ADMINISTRATION - INTERIOR ELEVATIONS
- A-27 BLDG. C ADMINISTRATION - INTERIOR ELEVATIONS
- A-28 BLDG. C ADMINISTRATION - INTERIOR ELEVATIONS
- A-29 BLDG. C ADMINISTRATION - INTERIOR ELEVATIONS
- A-30 BLDG. C ADMINISTRATION - INTERIOR ELEVATIONS
- A-31 BLDG. C ADMINISTRATION - INTERIOR ELEVATIONS
- A-32 BLDG. C ADMINISTRATION - INTERIOR ELEVATIONS
- A-33 BLDG. C ADMINISTRATION - INTERIOR ELEVATIONS

- B-1 GENERAL NOTES & TYPICAL DETAILS.
- B-2 FOUNDATION PLAN & DETAILS - UNITS B, C, D.
- B-3 FOUNDATION PLAN & DETAILS - UNIT A.
- B-4 TRUSS & SHEAR FRAME DETAILS - UNIT A.
- B-5 STRUCTURAL SECTIONS - UNIT A.
- B-6 ROOF FRAMING PLAN - UNITS B, C, D.
- B-7 ROOF FRAMING PLAN - UNITS E, F, G.
- B-8 CLASS ROOM SECTIONS AND ROOF JOIST DETAILS.
- B-9 SHEAR FRAME DETAILS - UNITS B, C, D, E, F, G.
- B-10 WALL ELEVATIONS AND ARCADE SECTIONS.
- B-11
- M-1 SHOP - HOME MAKING - ART - OFFICE BUILDING.
- M-2 CLASS ROOM BLDGS 1-5, 6-10, 11-14.
- M-3 PLOT PLAN MECHANICAL & ELECTRICAL
- M-4 DETAILS & SCHEDULES
- M-5 SHOP - HOME MAKING - ART - OFFICE BUILDING.
- M-6 CLASS ROOM BLDGS 1-5, 6-10, 11-14
- M-7
- M-8
- M-9
- M-10
- M-11