

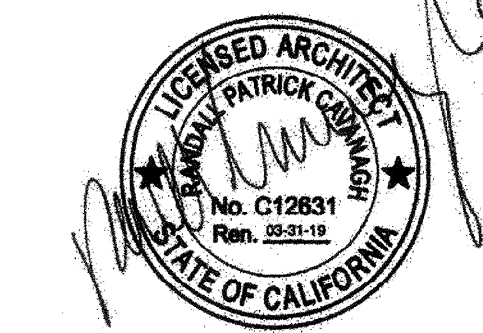
MODULAR MANUFACTURER PROPRIETARY STATEMENT  
 THESE DRAWINGS AND THE MATERIAL CONTAINED THEREIN ARE THE PROPERTY OF AMERICAN MODULAR SYSTEMS, INC. (AMS) AND SHALL NOT BE REPRODUCED, COPIED OR OTHERWISE DISPOSED OF DIRECTLY OR INDIRECTLY AND SHALL NOT BE USED IN WHOLE OR IN PART TO ASSIST IN THE MAKING OF OR FOR THE PURPOSE OF FURNISHING ANY INFORMATION FOR THE MAKING OF DRAWINGS, PRINTS, APPARATUS OR PARTS THEREOF WITHOUT THE FULL KNOWLEDGE AND WRITTEN CONSENT OF AMS. ALL PATENTABLE MATERIAL CONTAINED HEREIN AND ORIGINATING WITH AMS SHALL BE THE SOLE PROPERTY OF AMS.

PRE-CHECKED SET NAME  
**24' x 40' THRU 120' x 40'**  
**2:12 PITCHED ROOF**

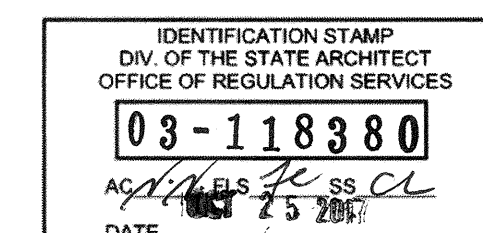
SITE SPECIFIC PROJECT NAME  
**STOCKPILE**  
**(1) 60x40 BUILDING**  
**(1) 72x40 BUILDING**

SHEET TITLE  
**RESTROOM OPTION**  
**FLOOR PLAN**

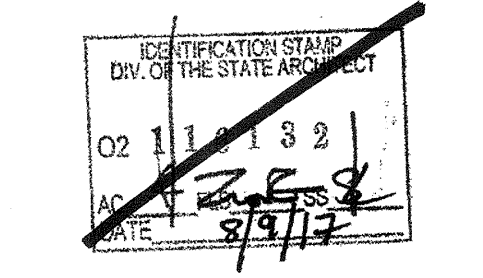
MANUFACTURER PROFESSIONAL OF RECORD ON PC



AGENCY TRACKING NO. 63321-241  
 FILE NO. 15-6



PROJECT SPECIFIC STATE AGENCY APPROVAL



ORIGINAL PC STATE AGENCY APPROVAL

**BASED ON PC# 02-113939**  
 PRE-CHECK (PC) DOCUMENT - CODE: 2013 CBC  
 A SEPARATE PROJECT APPLICATION FOR CONSTRUCTION IS REQUIRED.

REVISIONS


DRAWN BY: BA  
 SCALE: AS NOTED  
 DATE: 04/27/17  
 SHEET NUMBER

**A1.2**

- A. SEWER AND WATER STUB OUTS SHALL BE LOCATED WITHIN THE ALLOWABLE AREA AS SHOWN ON FLOOR PLAN AND CONNECTIONS SHALL BE EASILY ACCESSIBLE FOR FUTURE RELOCATION. STUB OUT HEIGHT SHALL BE COORDINATED BY THE MANUFACTURER.
- B. PIPING - WATER, COPPER TYPE "L", 95/5 SOLDER, WASTE DRAIN AND VENT ABS.
- C. TOILET TISSUE DISPENSER - BRADLEY MODEL 508-32 OR EQUAL
- D. TOILET PARTITIONS - ACCURATE SOLID PLASTIC OR EQUAL
- E. TOILET SEAT COVER - BOBRICK B-221 OR EQUAL

**STANDARD EQUIPMENT SCHEDULE**

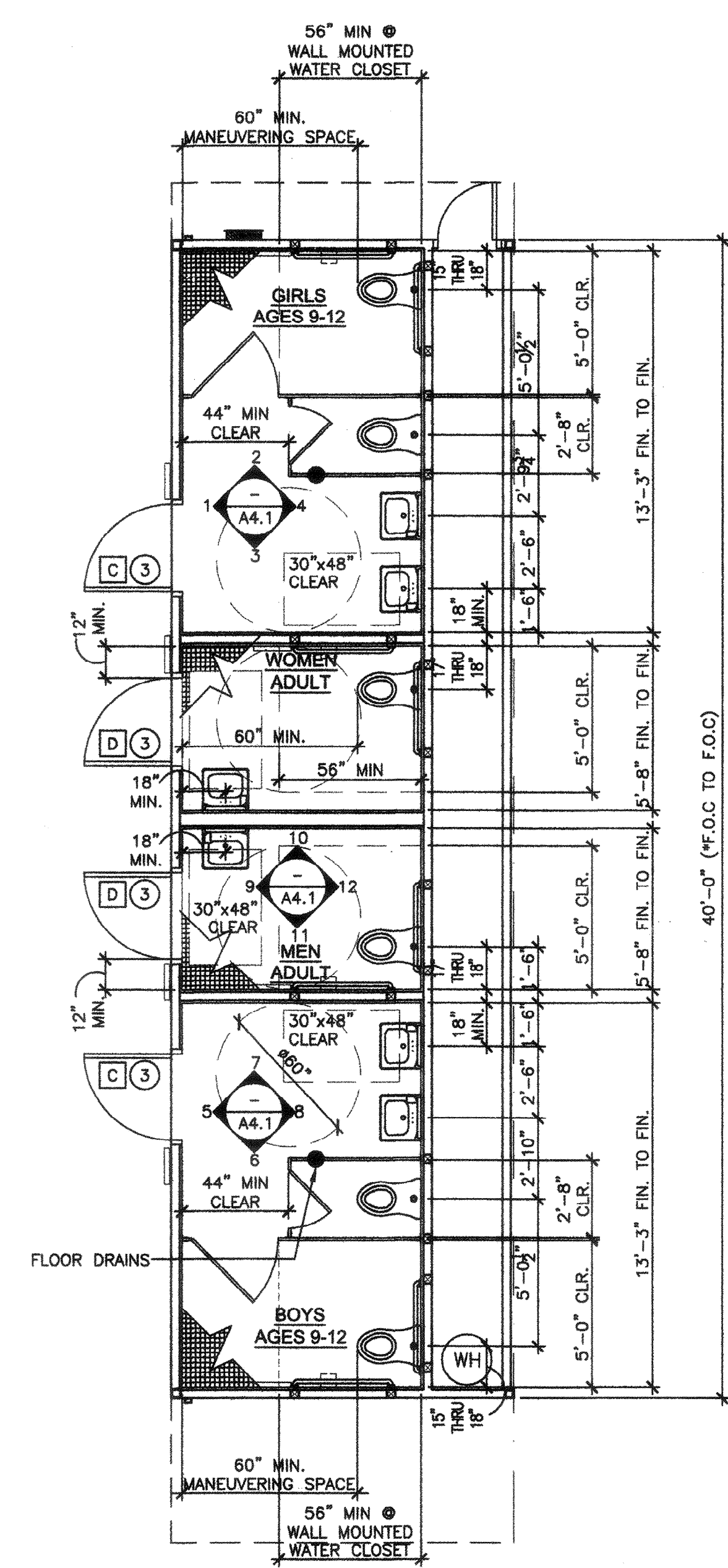
- (X) = KEY NOTE - SEE SHEET NOTES
- (X) = DOOR TYPE - SEE SCHEDULE SHEET N3.0
- (X) = DOOR HARDWARE - SEE HARDWARE SCHEDULE SHEET N3.0
- (X) = WINDOW TYPE - SEE SCHEDULE SHEET N3.0
- (60") = 60" DIAMETER CLEAR FLOOR TURNING SPACE

**SYMBOLS LEGEND**

1. INTERIOR WALLS MAY OCCUR THROUGHOUT BUILDING. REFER TO SHEET SB.1 FOR ATTACHMENTS.
2. REFER TO SCHEDULE 7/P2.0 FOR ACCESSIBLE HEIGHTS AT TOILETS.
3. REFER TO DETAILS 2, 4 & 5, SHEET A7.2 FOR TOILET PARTITION ANCHORAGE BLOCKING.
4. PROVIDE FIRE BLOCKING PER HVAC NOTE #9 SHEET M1.7
5. SEWER AND WATER STUB OUTS SHALL BE LOCATED WITHIN THE ALLOWABLE AREA AS SHOWN ON FLOOR PLAN AND CONNECTIONS SHALL BE EASILY ACCESSIBLE FOR FUTURE RELOCATION. STUB OUT HEIGHT SHALL BE COORDINATED BY THE MANUFACTURER.

**PLUMBING NOTE**

MODULAR MFR. TO STUB THROUGH FLOOR ALL PLUMBING LINES. BUILDING PERIMETER POC'S SHOWN ARE FOR COORDINATION PURPOSES ONLY. ALL UNDER-FLOOR CONNECTIONS ARE BY SITE CONTRACTOR U.O.N.



NOTE:  
 PROVIDE 4x SOLID BACKING AT ALL CONNECTION POINTS FOR GRAB BARS, TYP.

NOTE:  
 PROVIDE 4x SOLID BACKING FOR SOLID PLASTIC PARTITIONS.

NOT USED | 1 GIRLS, WOMEN, MEN & BOYS RESTROOM FLOOR PLAN | SCALE: 1/4"=1'-0" | 2

NOT USED | 3 NOT USED | 4

SHEET NOTES